



Hormead Road

Maida Vale, W9

Asking Price £600,000

A smart two bedroom, one bathroom freehold house set on a quiet cobbled street in Maida Vale.

This property benefits from two double bedrooms, separate kitchen, guest WC and a private patio.

Located 0.4 miles from Westbourne Park Underground (Circle & Hammersmith Line), 0.7 miles from Portobello Road and 0.8 miles from Paddington Recreational Ground.

Sole agent.



Hormead Road

Maida Vale, W9

- Freehold house
- Two bedrooms
- Private patio
- 0.4 miles from Westbourne Park Underground



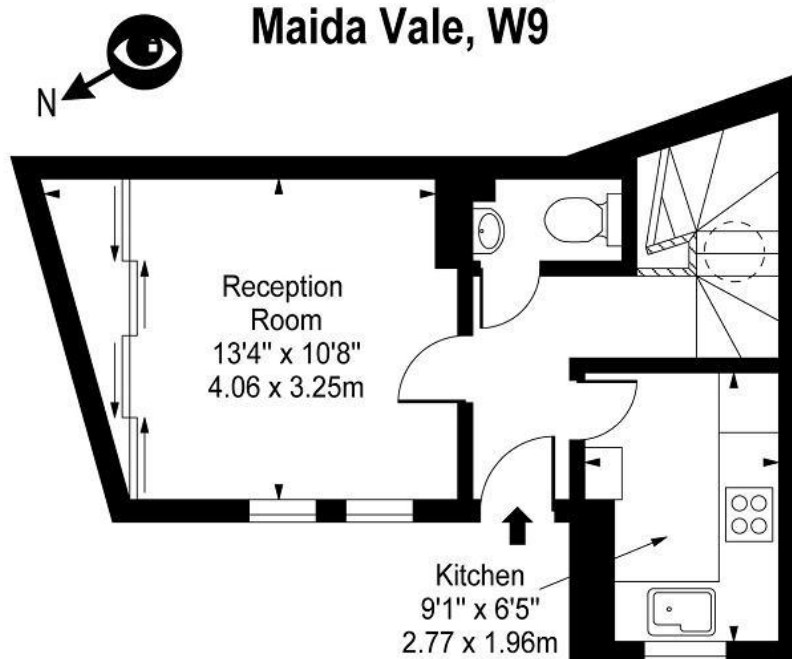
Tenure: Freehold
Service Charge: £0
Ground Rent: £0
Local Authority: Westminster
Council Tax Band: E

Energy Efficiency Rating		
	Current	Potential
Very energy efficient - lower running costs		
A (92-100)		90
B (81-91)		
C (69-80)	76	
D (55-68)		
E (39-54)		
F (21-38)		
G (1-20)		
Not energy efficient - higher running costs		
England, Scotland & Wales		EU Directive 2002/91/EC

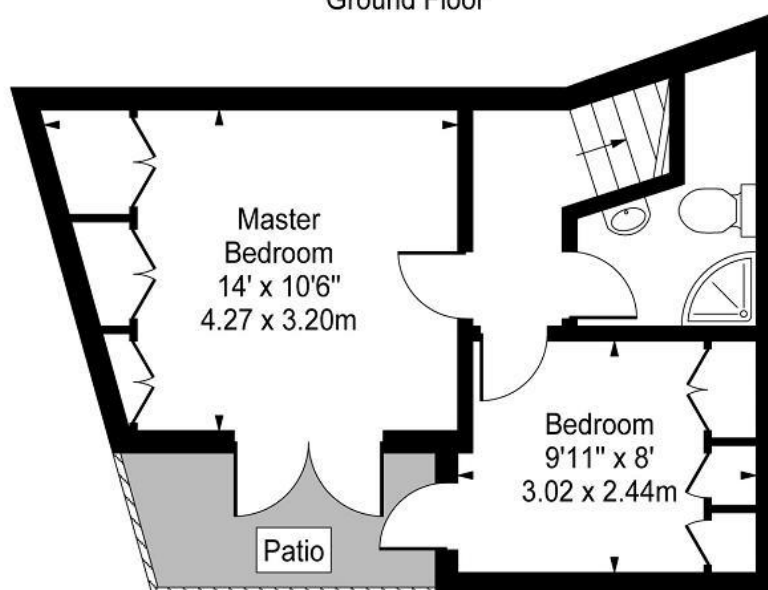
Chestertons Little Venice Sales

26 Clifton Road
Maida Vale
London
W9 1SX
littlevenice@chestertons.co.uk
020 7286 4632
chestertons.co.uk

Hormead Road, Maida Vale, W9



Ground Floor



Lower Ground Floor

Approx Gross Internal Area 580 Sq Ft - 53.88 Sq M

For Illustration Purposes Only - Not To Scale

Floor Plan by www.bpmmediagroup.com

Ref: No. P54418

