



Connaught House

Clifton Gardens, W9

Asking Price £1,550,000

A spectacular and beautifully finished two bedroom, two bathroom apartment positioned on the first floor (with lift) of this white stucco fronted building and further benefitting from designated parking, wonderful balcony and views over and access to the wonderful Little Venice Amenity Communal Gardens which has the almost unique benefit of access to a fantastic tennis court.

Delightfully bright with fabulously high ceilings, the accommodation comprises a large reception room with views over the garden, a modern fully fitted kitchen, two bedrooms with two bathrooms. One bathroom being en suite to the master bedroom.

Clifton Gardens is situated within a conservation area of prime residential property and located nearby to shops, cafes on Clifton Road, the famous Regents Canal and the underground at Warwick Avenue (Bakerloo line).



Connaught House

Clifton Gardens, W9

- A spectacular two bedroom, two bathroom apartment, positioned on the first floor of a white stucco fronted building.
- The apartment comes with designated off road parking.
- Benefitting from a share in the freehold.
- With access to the ever popular Little Venice Amenity communal garden.



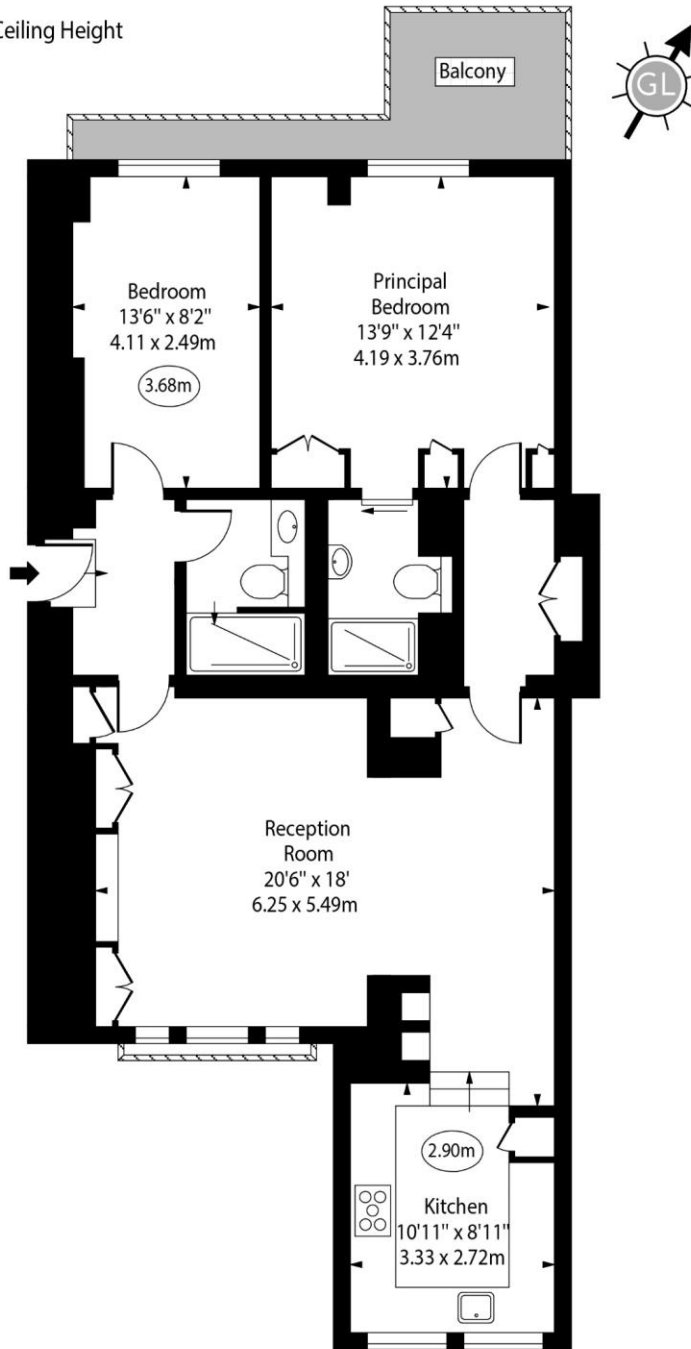
Tenure: Share of Freehold 999 years
Service Charge: £4,380 pa
Ground Rent: Peppercorn
Local Authority: City Of Westminster
Council Tax Band: G

Chestertons Little Venice Sales

26 Clifton Road
Maida Vale
London
W9 1SX
littlevenice@chestertons.co.uk
020 7286 4632
chestertons.co.uk

Connaught House,
Clifton Gardens, W9

○ - Ceiling Height



First Floor

Approx Gross Internal Area 905 Sq Ft - 84.07 Sq M

For Illustration Purposes Only - Not To Scale

www.goldlens.co.uk

Ref. No. 024223E

