



St. Peter's Place

London, W9

Asking Price £1,400,000

A superb opportunity to purchase a spacious well-proportioned four bedroom, 2 bathroom freehold mews house with a garage, located in the heart of this sought-after area forming part of a modern gated mews.

The mews house is arranged over three floors and offers great accommodation throughout with a separate kitchen, breakfast and living/dining room, plus garage on the ground floor. The first floor has a spacious southwest facing sitting/dining room with a balcony, then two bedrooms and a bathroom. The top floor has two further double bedrooms, of which the master has integrated wardrobes, drawers and an en-suite bathroom.

St Peter's Place is situated near two popular Montessori nurseries and a choice of well-regarded primary schools. The excellent amenities offered by this fashionable area include boutique shops, cafes, an Everyman cinema, picturesque Little Venice, towpaths and restaurants along the Grand Union Canal and Sheldon Square. It is well served for transport with bus and underground links serving London's mainline stations, Warwick Avenue (Bakerloo line – 0.4 miles) and Paddington (Circle, H&C, District, Elizabeth lines 0.8 miles)



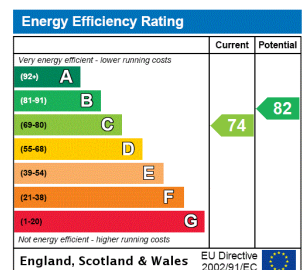
St. Peter's Place

London, W9

- Four bedroom
- House
- Terraced
- Private Parking
- Freehold



Tenure: Freehold
Service Charge: £0
Ground Rent: £0
Local Authority: City of Westminster
Council Tax Band: G



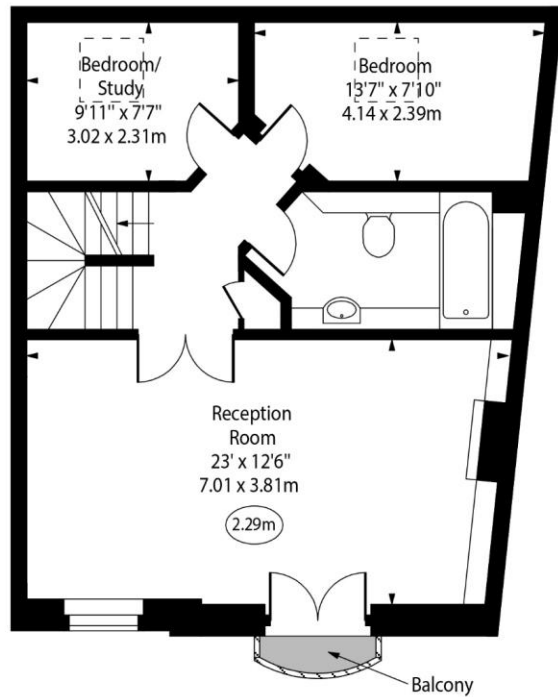
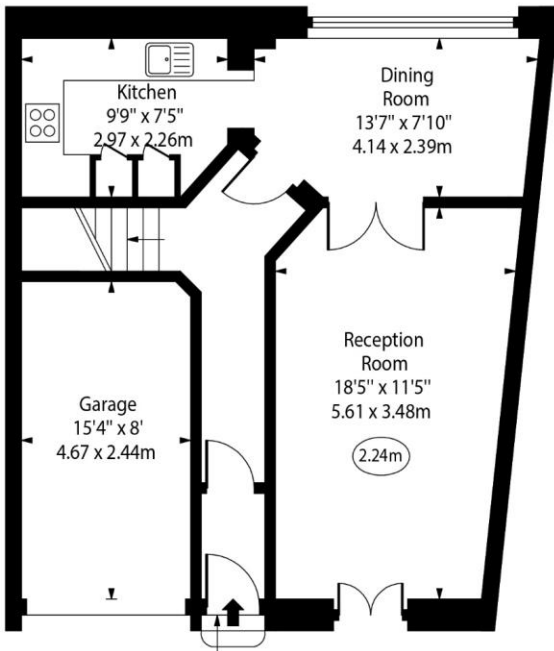
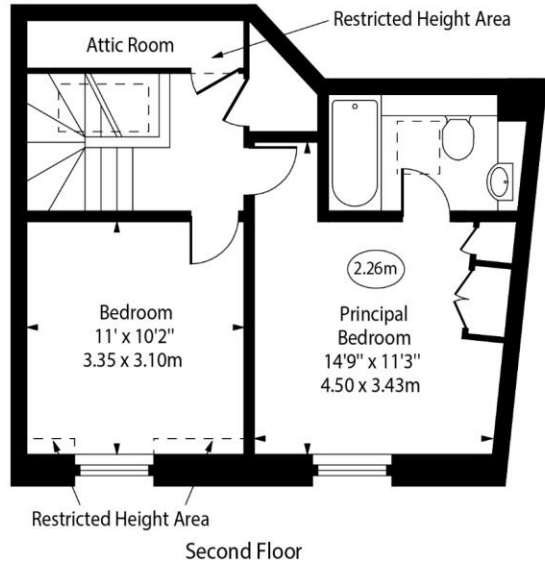
Chestertons Little Venice Sales

26 Clifton Road
 Maida Vale
 London
 W9 1SX
 littlevenice@chestertons.co.uk
 020 7286 4632
 chestertons.co.uk

St. Peters Place, W9



○ - Ceiling Height



Approx Gross Internal Area 1652 Sq Ft - 153.47 Sq M
(Including Garage)

Approx. Floor Area Including Restricted Heights 1682 Sq Ft - 156.26 Sq M
(Including Garage)

For Illustration Purposes Only - Not To Scale
www.goldlens.co.uk
Ref. No. 023425K

