



# Randolph Crescent

London, W9

Asking Price £4,800,000

A stunning garden maisonette spanning over 2750 square feet positioned within an end of terrace Victorian conversion and having the completely unique benefit, for the road and the area, of a double garage and off street parking for 2 cars.

Positioned over the ground and lower ground floor of an end of terrace Victorian conversion with a rare triple aspect and benefitting from a charming private patio garden which gives direct access to the ever popular Triangle Amenity communal gardens, the accommodation comprises, on the ground floor, a spacious and bright reception room with direct access to a balcony with steps down to the patio garden, a large and fully fitted eat in kitchen, an extremely spacious master bedroom, large bathroom and a very useful utility space. The garden level is made up for 3 large double bedrooms, a further large reception room which could be used as a further bedroom/playroom, and a useful study. Two bathrooms on this level serve the bedrooms. The garage has been converted into a extremely useful further living space with a mezzanine area. This can be accessed via the common areas of the building.

Randolph Crescent is superbly located for all the amenities Little Venice has to offer, these include Warwick Avenue (Bakerloo Line) and the shops & cafes of Clifton Road.



# Randolph Crescent

London, W9

- A stunning garden duplex apartment spanning approx. 2750 square feet.
- The apartment has the unique benefit for the street of a double garage along with off street parking for 2 cars.
- Positioned on arguably the most popular street in central Little Venice.
- Being the end of terrace the apartment have the enviable benefit of windows on three sides offering abundant natural light throughout.





---

**Tenure:** Share of Freehold 957 years 10 months

**Service Charge:** £5,244 pa

**Ground Rent:** Peppercorn

**Local Authority:** Westminster

**Council Tax Band:** H

---

### *Chestertons Little Venice Sales*

26 Clifton Road

Maida Vale

London

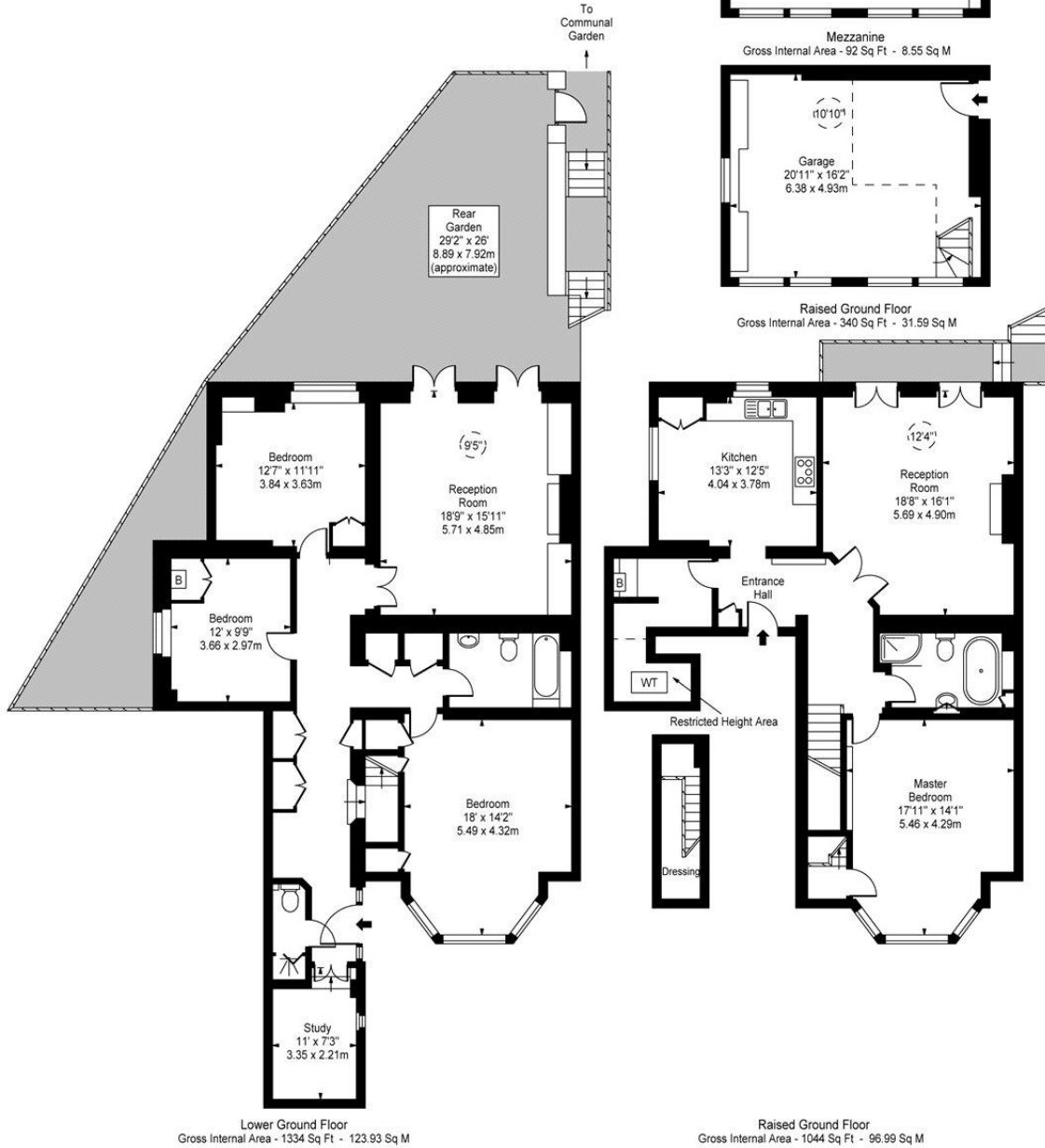
W9 1SX

[littlevenice@chestertons.co.uk](mailto:littlevenice@chestertons.co.uk)

020 7286 4632

[chestertons.co.uk](https://www.chestertons.co.uk)

Randolph Crescent, W9



Approx Gross Internal Area **2378 Sq Ft - 220.92 Sq M**  
 Approx. Floor Area Including Restricted Heights **2412 Sq Ft - 224.07 Sq M**  
 Garage Area **340 Sq Ft - 31.59 Sq M**  
 (Excluding Restricted Height Area)

For Illustration Purposes Only - Not To Scale  
 www.goldlens.co.uk  
 Ref. No. 010868M

Chesterton Global Ltd trading as Chestertons for themselves and for the vendor of this property whose agents they are, give notice that (i) these particulars do not constitute any part of an offer or contract, (ii) all statements contained within these particulars are made without responsibility on the part of Chestertons or the vendor, (iii) whilst made in good faith, none of the statements contained within these particulars are to be relied upon as a statement or representation of fact, (iv) any intending purchasers must satisfy themselves by inspection or otherwise as to the correctness of each of the statements contained within these particulars, (v) the vendor does not make or give either Chestertons or any person in their employment any authority to make or give representation or warranty whatsoever in relation to this property. Wide angle lenses may be used. ©Copyright Chestertons | Chesterton Global Ltd | Registered Office 40 Connaught Street, Hyde Park, London W2 2AB Registered Company Number 05334580.



This paper is 100% recyclable