



# Clarendon Gardens

London, W9

Asking Price £4,050,000

A truly remarkable opportunity to own a five storey, six-bedroom house located in the prestigious Clarendon Gardens, W9.

This unique property, divided into three separate dwellings, with planning permission to merge the upper two apartments to one, presents an exciting prospect for those seeking versatility, ample space, and a touch of timeless elegance. This magnificent residence, while in fair condition, retains its enchanting period features, adding to its charm and character.

Clarendon Gardens, W9, is a prestigious location that offers a wealth of amenities, including excellent schools, vibrant shopping districts, cultural attractions, and easy access to the beautiful open spaces of Regent's Park. The convenient transport links ensure quick connections to the bustling heart of London, making this an ideal location for those seeking a balance between tranquillity and urban convenience.



# Clarendon Gardens

London, W9

- A fantastic stucco fronted house currently configured as three separate dwellings.
- Planning permission has been granted to merge the upper two units.
- Positioned on one of Little Venice's premier roads.
- Spanning over 3115 square feet.



---

**Tenure:** Freehold

**Service Charge:** £0

**Ground Rent:** £0

**Local Authority:** City Of Westminster

**Council Tax Band:** E

---

*Chestertons Little Venice Sales*

26 Clifton Road

Maida Vale

London

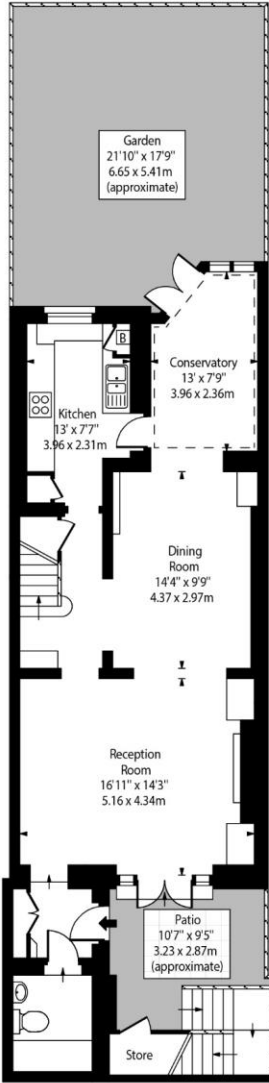
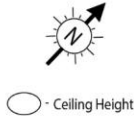
W9 1SX

[littlevenice@chestertons.co.uk](mailto:littlevenice@chestertons.co.uk)

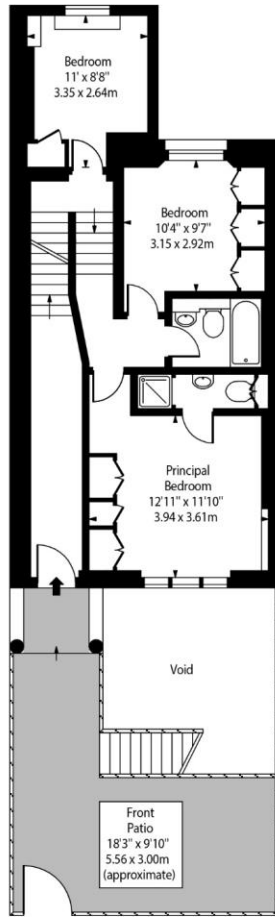
020 7286 4632

[chestertons.co.uk](http://chestertons.co.uk)

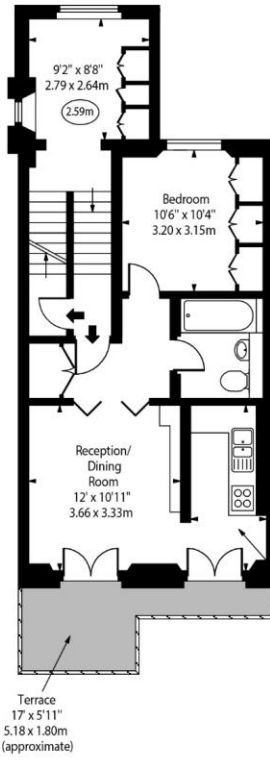
Clarendon Gardens, W9



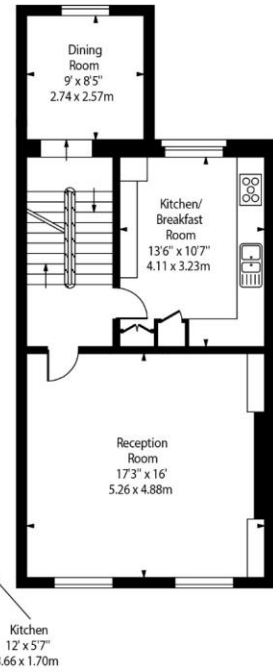
Lower Ground Floor



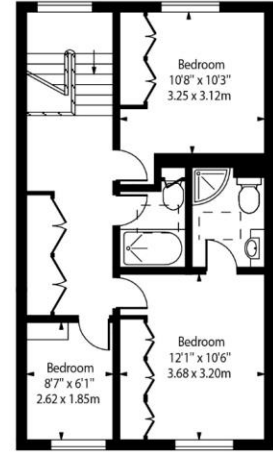
Ground Floor



First Floor



Second Floor



Third Floor

Approx Gross Internal Area 3115 SqFt - 289.38 Sq M

For Illustration Purposes Only - Not To Scale

