



# Clarendon Gardens

London, W9

Asking Price £1,695,000

A delightful and spacious three bedroom Maisonette set over two floors of this white stucco fronted house. Located on one of Little Venice's premier roads, moments from the shops and cafes of Clifton Road

The apartment has been recently refurbished & comprising: three bedrooms, two bathrooms (one ensuite to master), cloakroom/laundry, large double reception with hardwood floors leading to bright spacious conservatory and modern kitchen. In addition there is a private patio garden. Offered unfurnished.

Located moments to the Canal and Warwick Avenue Underground Station, and the cafes of Clifton Road are on the doorstep.



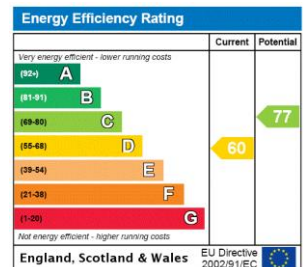
# Clarendon Gardens

London, W9

- Stunning Period Maisonette
- Large Reception With Dining Room, Conservatory & Private Garden
- Three Double Bedrooms & Two Bathrooms
- Prime Little Venice Location Moments To Warwick Avenue Underground



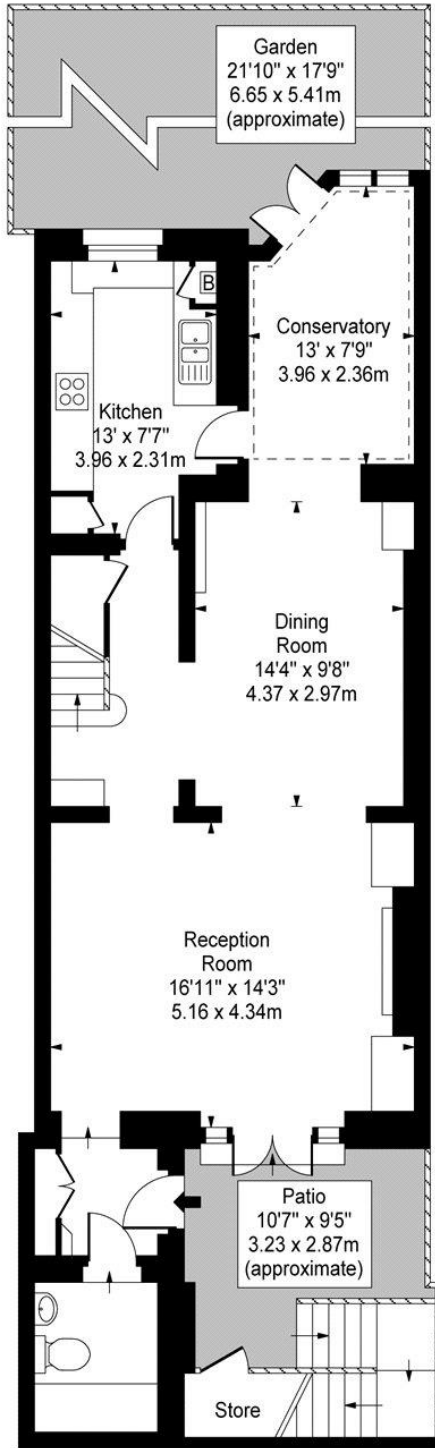
**Tenure:** Share of Freehold  
**Service Charge:** £0  
**Ground Rent:** £0  
**Local Authority:** City Of Westminster  
**Council Tax Band:** E



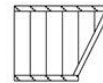
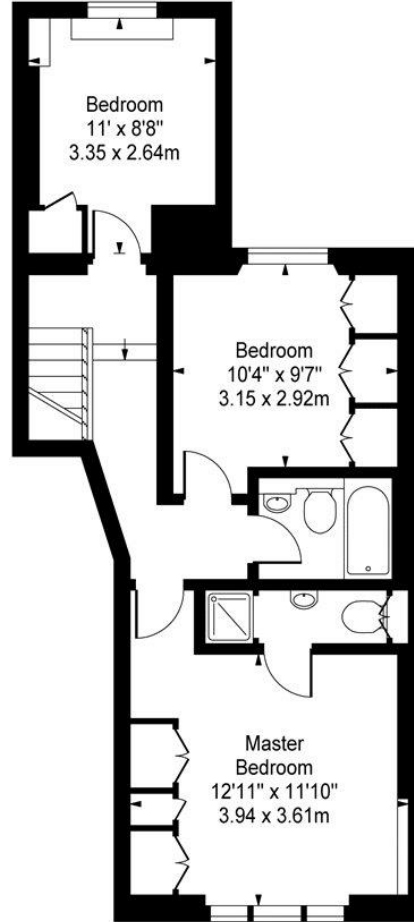
### Chestertons Little Venice Sales

26 Clifton Road  
 Maida Vale  
 London  
 W9 1SX  
 littlevenice@chestertons.co.uk  
 020 7286 4632  
 chestertons.co.uk

**Clarendon Gardens,  
Little Venice, W9**



Lower Ground Floor



Ground Floor

**Approx Gross Internal Area 1290 Sq Ft - 119.84 Sq M**

For Illustration Purposes Only - Not To Scale  
Floor Plan by [www.bpmmediagroup.com](http://www.bpmmediagroup.com)  
Ref. No. P54339

