



Morshead Mansions

Morshead Road, W9

Asking Price £1,080,000

A truly stunning first floor mansion block flat located in the ever popular Morshead Mansions. This beautiful and spacious first floor property is finished to a high standard and includes a large reception room which also benefits from views overlooking Paddington Recreation Ground. The accommodation also includes three double bedrooms, family bathroom, and kitchen. Other benefits include newly renovated communal areas.

This fine apartment is positioned within this highly regarded and impeccably managed mansion block which is directly opposite the open spaces of Paddington Recreation Ground and situated only moments from fabulous local cafes, bars and shopping facilities nearby together with Maida Vale underground station (Bakerloo Line).

Further benefits include access to well maintained communal gardens approached from within the building. Located on Morshead Road, the property is within easy reach of a superb selection of shops, cafes and restaurants in Maida Vale, whilst the green open spaces and sports facilities of Paddington Recreation Ground are close by. The nearest underground station is Maida Vale (Bakerloo Line).



Morshead Mansions

Morshead Road, W9

- A fantastic first floor three bedroom apartment.
- Benefitting from stunning views of Paddington Recreation ground and access to communal gardens.
- The apartment comes with a share in the freehold.
- Set within an extremely well run mansion block.



Tenure: Share of Freehold 967 years 8 months

Service Charge: £4,000 pa

Ground Rent: £100 pa

Local Authority: City of Westminster

Council Tax Band: E

Chestertons Little Venice Sales

26 Clifton Road

Maida Vale

London

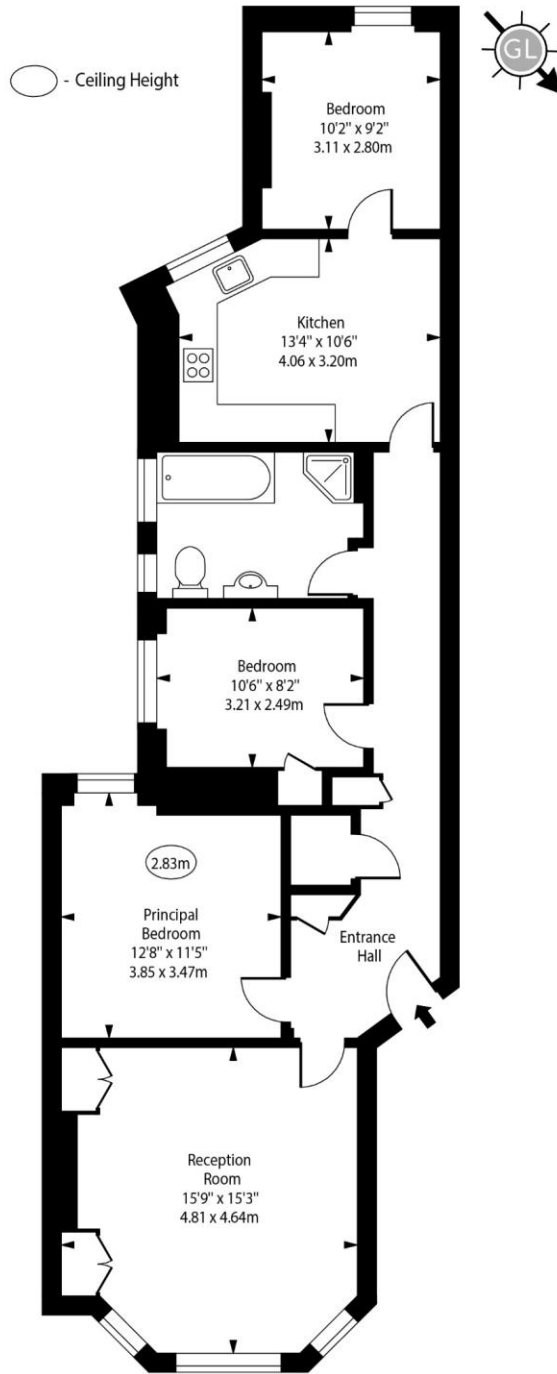
W9 1SX

littlevenice@chestertons.co.uk

020 7286 4632

chestertons.co.uk

Morshead Mansions,
Morshead Road, W9



First Floor

Approx Gross Internal Area 970 Sq Ft - 90.11 Sq M

For Illustration Purposes Only - Not To Scale
www.goldlens.co.uk
Ref. No. 023232MS

