



Randolph Avenue

London, W9

Asking Price £575,000

An opportunity to purchase a well-proportioned bright one bedroom second floor apartment (with a lift) forming part of an impressive converted period stucco fronted house.

The property is located in the heart of this fashionable area adjacent to the famous Regents Canal and retains many attractive features including high ceilings, full-length sash windows and access to a large roof terrace.

Randolph Avenue is located within walking distance of shops, cafes in Clifton and the Underground at Warwick Avenue (Bakerloo line).

CHESTERTONS



Randolph Avenue

London, W9

- A charming one-bedroom apartment positioned on the 2nd floor (with lift) of a Victorian Stucco fronted conversion.
- Benefitting from a charming terrace.
- The apartment comes with a share in the freehold.
- Spanning over 400 square feet.



Tenure: Share of Freehold 88 years 8 months

Service Charge: £5,962.08 pa

Ground Rent: £100 pa

Local Authority: City Of Westminster

Council Tax Band: D

Chestertons Little Venice Sales

26 Clifton Road

Maida Vale

London

W9 1SX

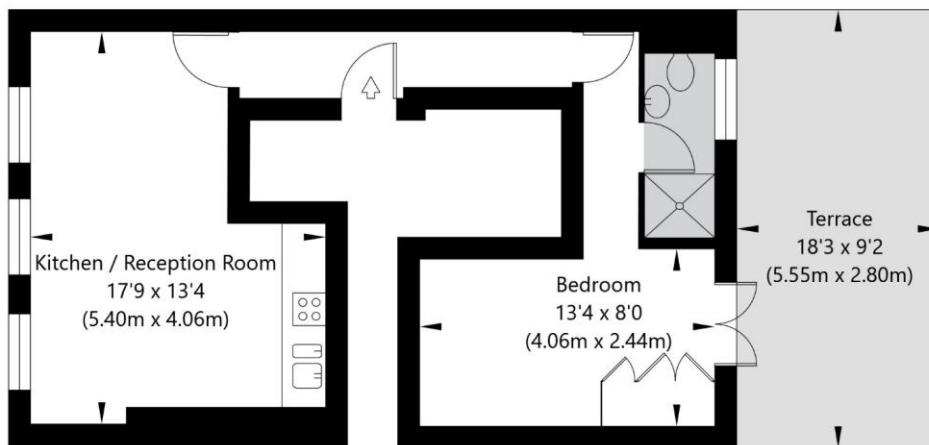
littlevenice@chestertons.co.uk

020 7286 4632

chestertons.co.uk

Randolph Avenue, London, W9 1BH

Second Floor
GROSS INTERNAL FLOOR AREA
APPROX. 37.5 SQ M / 404 SQ FT



APPROXIMATE GROSS INTERNAL FLOOR AREA 37.5 SQ M / 404 SQ FT
THIS FLOOR PLAN IS FOR ILLUSTRATIVE PURPOSES ONLY AND
SHOULD BE USED FOR THIS PURPOSE BY PROSPECTIVE APPLICANTS AS ITS NOT TO SCALE.

(c) AMBERSHORE PIX LIMITED / PHOTO - VIDEO - FLOOR PLANS / 0800 999 1577 / WWW.AMERSHOREPIX.CO.UK