



# Winterton House

London, W9

Asking Price £1,100,000

Positioned on the second floor (with lift), at the rear of this modern and popular purpose built block is this stunning and beautifully finished spacious two bedroom apartment.

Spanning over 1000 square feet, benefitting from its own balcony, as well as designated underground parking, the accommodation comprises a large double reception space with balcony, a connected by separate fully fitted modern kitchen, a large master bedroom with abundant storage with en-suite bathroom, a large second double bedroom which is served by a family bathroom and a useful utility cupboard.

Winterton House is within easy access to the wide range of shops and restaurants of Little Venice and is within walking distance of Maida Vale and Warwick Avenue tube station (Bakerloo Line).





# Winterton House

London, W9

- Positioned on the 2nd floor (with lift) and spanning over 1000 square feet.
- Finished to a spectacular standard throughout.
- The apartment comes with designated underground parking.
- Benefitting from 24 hour portage.





---

**Tenure:** Leasehold 102 years 5 months  
**Service Charge:** £7,932.04 pa  
**Ground Rent:** £825 pa  
**Local Authority:** City Of Westminster  
**Council Tax Band:** F

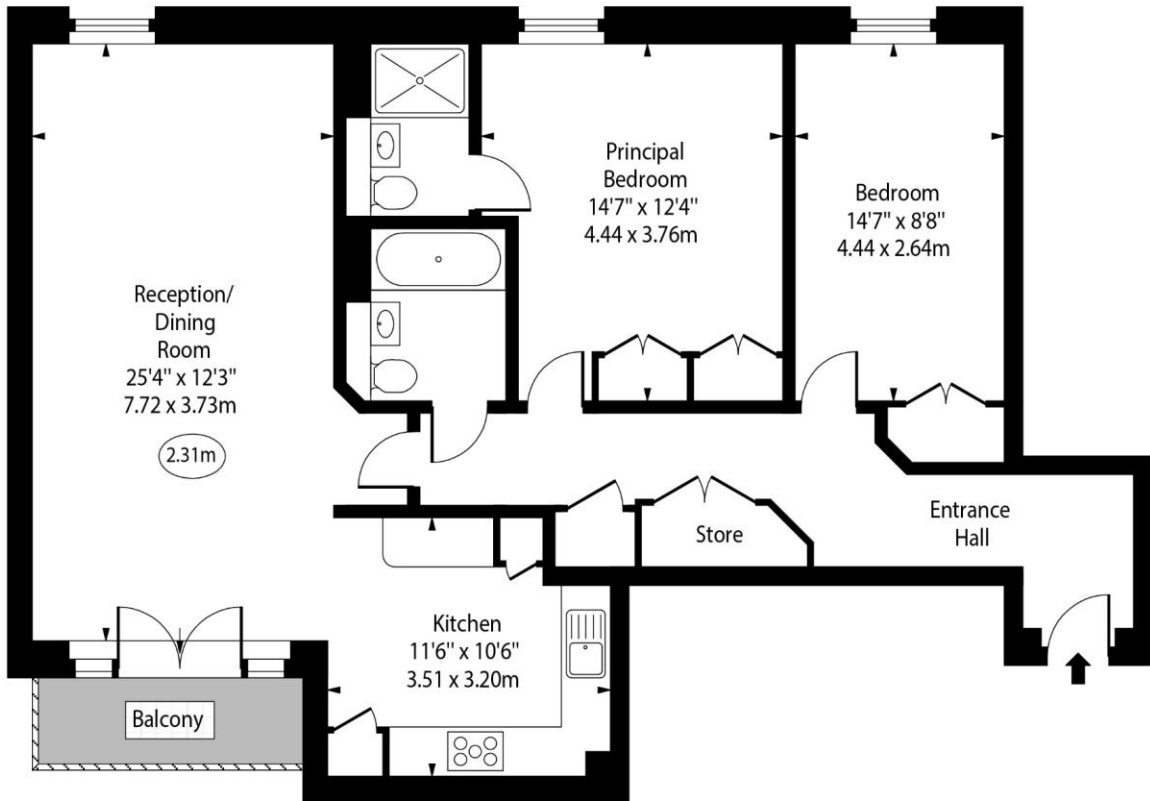
---

*Chestertons Little Venice Sales*

26 Clifton Road  
Maida Vale  
London  
W9 1SX  
littlevenice@chestertons.co.uk  
020 7286 4632  
chestertons.co.uk

# Winterton House, W9

○ - Ceiling Height



Second Floor

Approx Gross Internal Area 1014 Sq Ft - 94.20 Sq M

For Illustration Purposes Only - Not To Scale  
[www.goldlens.co.uk](http://www.goldlens.co.uk)  
 Ref. No. 022378K

