



Maida Vale

London, W9

Asking Price £1,250,000

Rodney Court is ideally situated within 900 metres of Warwick Avenue and Maida Vale Tube Stations (Bakerloo line) as well as the chic shops, cafes and boutiques of Clifton Gardens and Little Venice

Set on the sixth floor of this 1930s portered red brick mansion block in Maida Vale set behind a carriage driveway and porters lodge is a well presented three bedroom, three bathroom apartment with a large reception/dining room. The flat also benefits from a WC, passenger lift and a communal garden.



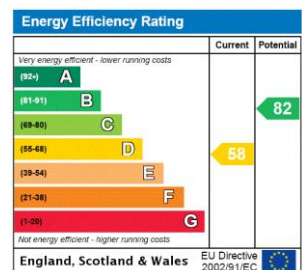
Maida Vale

London, W9

- Positioned on the sixth floor and spanning approximately 1500 square feet.
- Abundant natural light throughout.
- Benefitting from a long lease.
- Close to the amenities of Clifton Road.



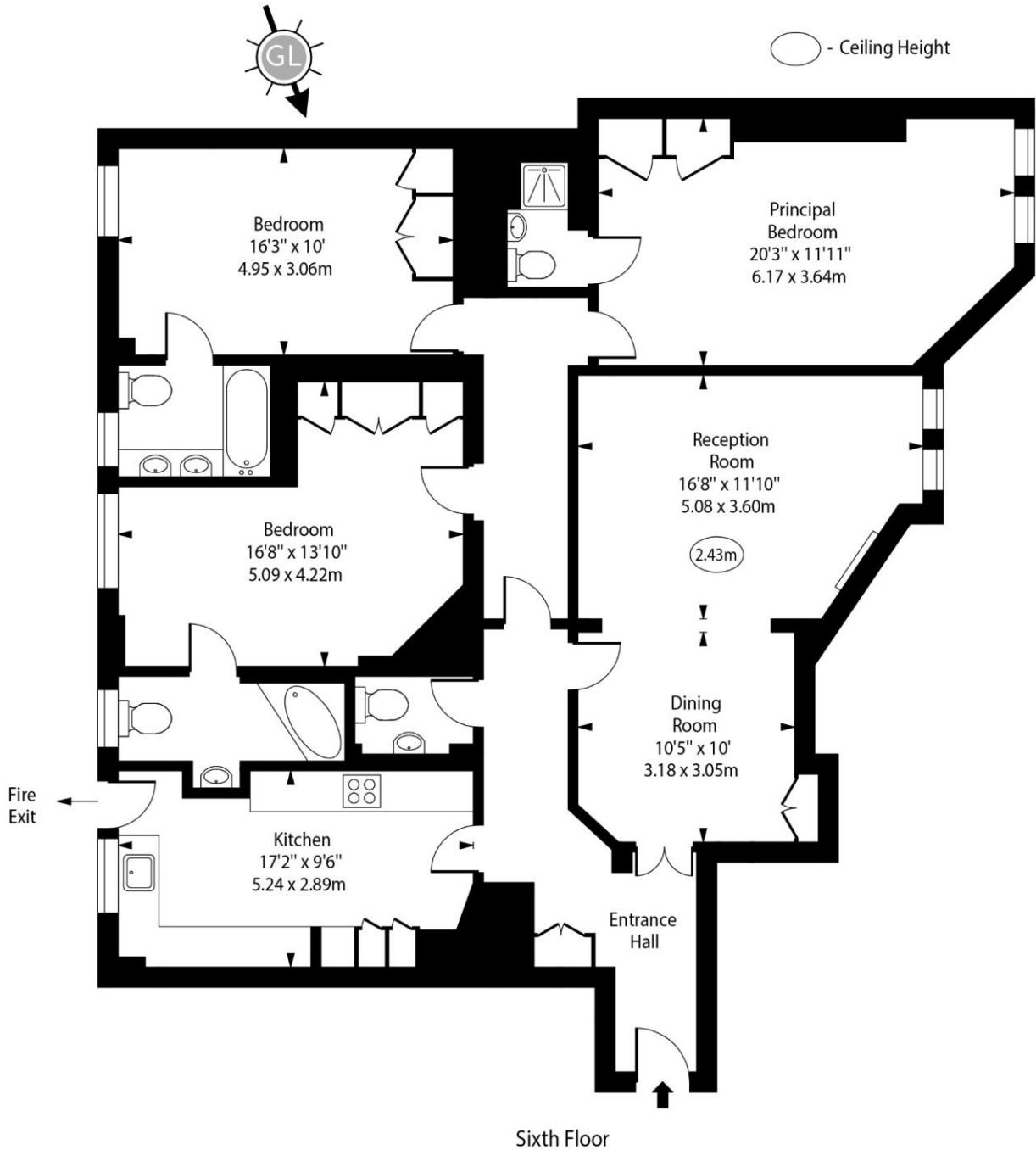
Tenure: Leasehold 131 years
Service Charge: £8,149.14 pa
Ground Rent: £0
Local Authority: City of Westminster
Council Tax Band: F



Chestertons Little Venice Sales

26 Clifton Road
Maida Vale
London
W9 1SX
littlevenice@chestertons.co.uk
020 7286 4632
chestertons.co.uk

Rodney Court,
Maida Vale, W9



Approx Gross Internal Area 1472 Sq Ft - 136.75 Sq M

For Illustration Purposes Only - Not To Scale

www.goldlens.co.uk

Ref. No. 022361J

