



# Blomfield Court

Maida Vale, W9

Asking Price £1,000,000

This flat, situated at the back of Blomfield court and is quiet with a feeling of privacy. It consists of a marvellous 23 ft sitting room, 2 double bedrooms and two bathrooms and a separate kitchen.

Located in the heart of Little Venice, the property affords easy access to an extensive array of local cafes, restaurants, shops and pubs, whilst the green open spaces of Regent's Park are also close by. Transport links are extensive with convenient access to Warwick Avenue underground station (Bakerloo Line) and Paddington Station with its national rail and Heathrow Express connections.



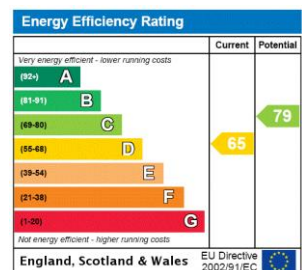
# Blomfield Court

Maida Vale, W9

- Long lease
- Ground floor
- Prestigious block



**Tenure:** Leasehold 145 years 7 months  
**Service Charge:** £5298.76 pa  
**Ground Rent:** £250 pa  
**Local Authority:** City Of Westminster  
**Council Tax Band:** F



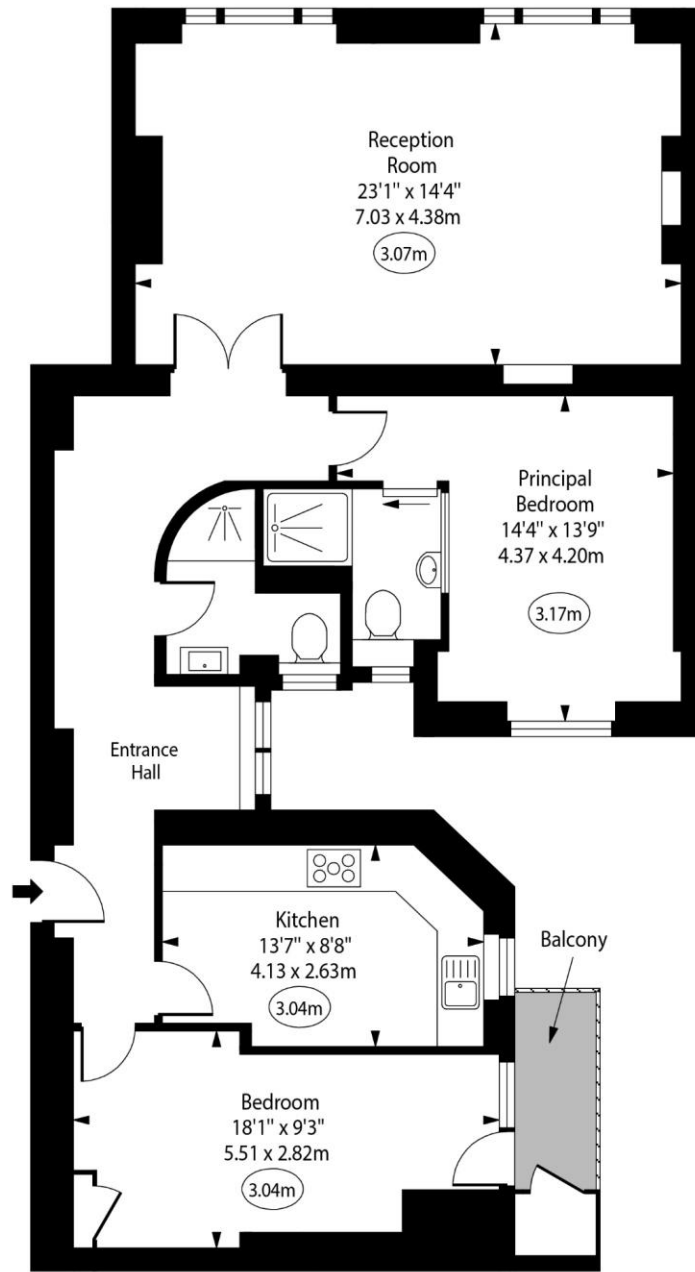
### Chestertons Little Venice Sales

26 Clifton Road  
 Maida Vale  
 London  
 W9 1SX  
 littlevenice@chestertons.co.uk  
 020 7286 4632  
 chestertons.co.uk

Blomfield Court,  
Maida Vale, W9



○ - Ceiling Height



Ground Floor

Approx Gross Internal Area 1025 Sq Ft - 95.22 Sq M

For Illustration Purposes Only - Not To Scale

[www.goldlens.co.uk](http://www.goldlens.co.uk)

Ref. No. 021466R

