



Ebury Street
London, SW1W

CHESTERTONS





A superb and exceptionally bright third floor apartment offering generous entertaining space with the four bedrooms quietly located at the rear of the building, overlooking the central gardens. The property further benefits from a balcony, lift, portorage and an underground parking space.

Number 55 Ebury Street is well located being moments' walk from Victoria Station (Victoria Line, Circle Line with National Rail services and Gatwick Express). Elizabeth Street with the numerous boutiques, restaurants etc is also close by with Sloane Square a little further along.

NB The property is currently let. Further details on request.

- double reception room
- 4 bedrooms
- balcony
- porter
- lifts

Asking Price £3,450,000

Score	Energy rating	Current	Potential
92+	A		
81-91	B	84 B	84 B
69-80	C		
55-68	D		
39-54	E		
21-38	F		
1-20	G		

Tenure: Leasehold 165 years – Expiring 09/12/2190
Service Charge: £14,800 Plus £4,000 towards sinking fund
Ground Rent: Peppercorn
Local Authority: Westminster
Council Tax Band: H

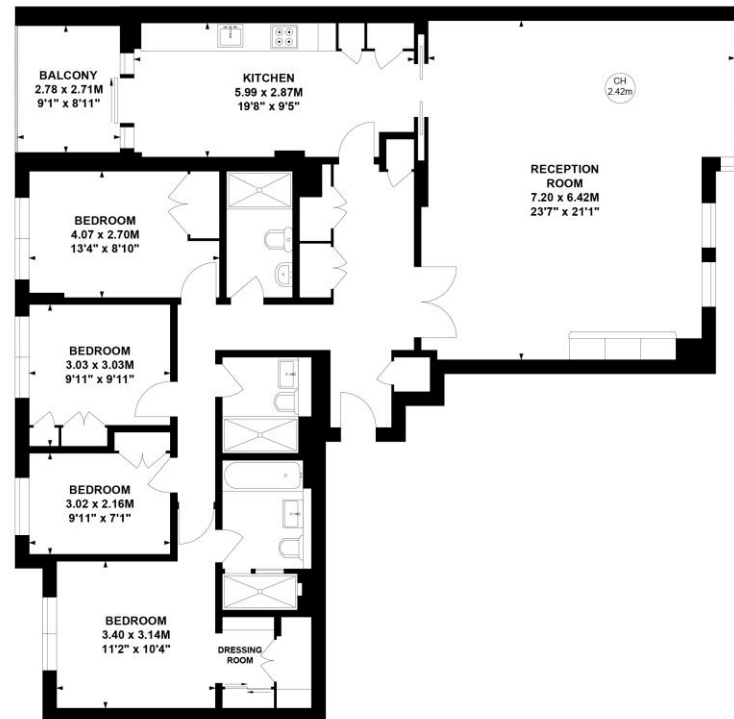
Chestertons Knightsbridge & Belgravia Sales

31 Lowndes St
 Knightsbridge
 London
 SW1X 9HX
 knightsbridge@chestertons.co.uk
 020 7235 8090

Ebury Street, SW1W

Approximate gross internal area
144.91 sq m / 1560 sq ft

Key :
CH - Ceiling Height



Third Floor

This plan is not to scale and must be used as layout guidance only. All measurements and areas are approximate and should not be relied upon to provide accurate information. This plan must not be relied upon when making property valuations, design considerations or any other such relevant decisions. We accept no responsibility or liability (whether in contract, tort or otherwise) in relation to any loss whatsoever arising from or in connection with any use of this plan or the adequacy, accuracy or completeness of it or any information within it.

Chesterton UK Services Limited trading as Chestertons for themselves and for the vendor of this property whose agents they are, give notice that (i) these particulars do not constitute any part of an offer or contract, (ii) all statements contained within these particulars are made without responsibility on the part of Chestertons or the vendor, (iii) whilst made in good faith, none of the statements contained within these particulars are to be relied upon as a statement or representation of fact, (iv) any intending purchasers must satisfy themselves by inspection or otherwise as to the correctness of each of the statements contained within these particulars, (v) the vendor does not make or give either Chestertons or any person in their employment any authority to make or give representation or warranty whatsoever in relation to this property. Wide angle lenses may be used. ©Copyright Chestertons | Chesterton UK Services Limited | Registered Office 40 Connaught Street, Hyde Park, London W2 2AB Registered Company Number 05334580.



This paper is
100% recyclable