



Cadogan Place  
Knightsbridge, SW1X

CHESTERTONS









One of London's most prestigious and sought-after addresses, this beautifully presented first-floor apartment in Cadogan Place offers a unique opportunity to enjoy the perfect blend of classic elegance, contemporary comfort. Situated in a charming period building, this property is ideal for those seeking a pied-à-terre with all the character and charm of a prime Belgravia residence.

As you step inside, you'll immediately be struck by the high ceilings that add a sense of grandeur to the space. The apartment has been meticulously maintained and is in excellent condition, providing a comfortable and stylish living environment. The apartment is flooded with natural light, creating a warm and inviting atmosphere that makes it a true sanctuary.

The highlight of the apartment is the west-facing balcony, where you can relax and soak up the sun, enjoying peaceful views over the garden square. Perfect for evening cocktails or simply unwinding after a busy day. Cadogan Place is just moments away from the vibrant and picturesque Belgravia Village. Here, you'll find an array of high-end boutiques, independent cafes, and Michelin-starred restaurants not to mention transport links and green spaces a stone throw away.

- First Floor
- Balcony
- One Bedroom
- Prime Location

Asking Price £1,295,000

Energy Efficiency Rating		
Energy efficient - lower running costs	Current	Potential
90-100 A		
81-90 B		
71-80 C		77
61-70 D	65	
51-60 E		
41-50 F		
31-40 G		
Not energy efficient - higher running costs		
England, Scotland & Wales EU Directive 2002/91/EC		

**Tenure:** Leasehold 111 years 2 months

**Service Charge:** £7,705.68 PA

**Ground Rent:** A Peppercorn

**Local Authority:** Royal Borough of Kensington & Chelsea

**Council Tax Band:** F

*Chestertons Knightsbridge & Belgravia Sales*

31 Lowndes St

Knightsbridge

London

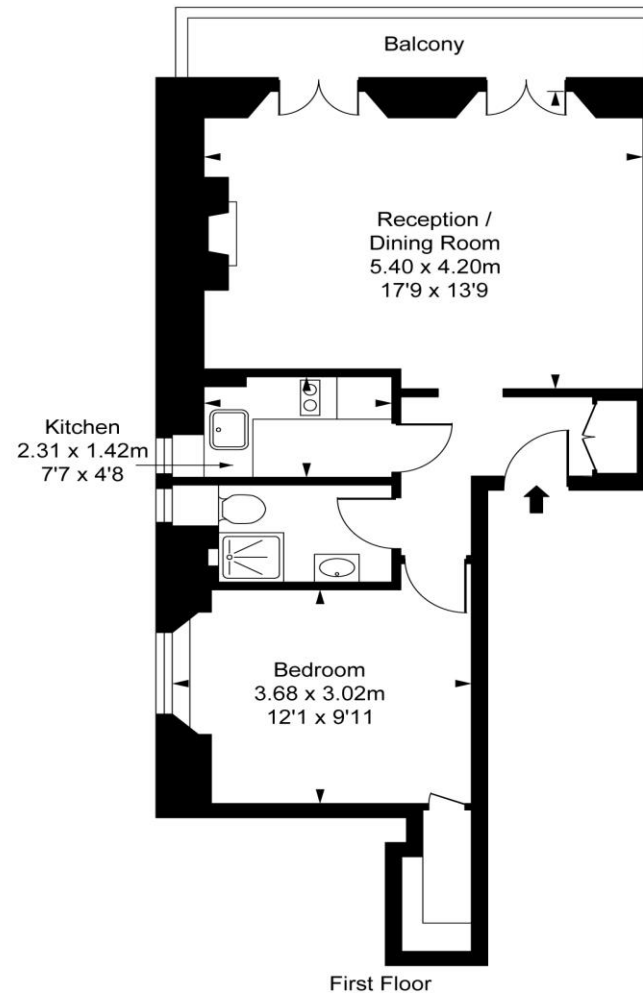
SW1X 9HX

knightbridge@chestertons.co.uk

020 7235 8090

## Cadogan Place, SW1X

Approximate Gross Internal Area  
45.42 sq m / 489 sq ft



First Floor

This plan is not to scale. It is for guidance and not for valuation purposes.  
All measurements and areas are approximate only, and have been prepared in accordance with the current edition of the RICS Code of Measuring Practice.  
© Fulham Performance

Chesterton UK Services Limited trading as Chestertons for themselves and for the vendor of this property whose agents they are, give notice that (i) these particulars do not constitute any part of an offer or contract, (ii) all statements contained within these particulars are made without responsibility on the part of Chestertons or the vendor, (iii) whilst made in good faith, none of the statements contained within these particulars are to be relied upon as a statement or representation of fact, (iv) any intending purchasers must satisfy themselves by inspection or otherwise as to the correctness of each of the statements contained within these particulars, (v) the vendor does not make or give either Chestertons or any person in their employment any authority to make or give representation or warranty whatsoever in relation to this property. Wide angle lenses may be used. ©Copyright Chestertons | Chesterton UK Services Limited | Registered Office 40 Connaught Street, Hyde Park, London W2 2AB Registered Company Number 05334580.



This paper is  
100% recyclable