



# Ennismore Gardens

Knightsbridge, SW7

Asking Price £675,000  
Leasehold

Development Opportunity: This generously sized one-bedroom flat is located within a stunning Portland stone building in a highly desirable area of Knightsbridge.

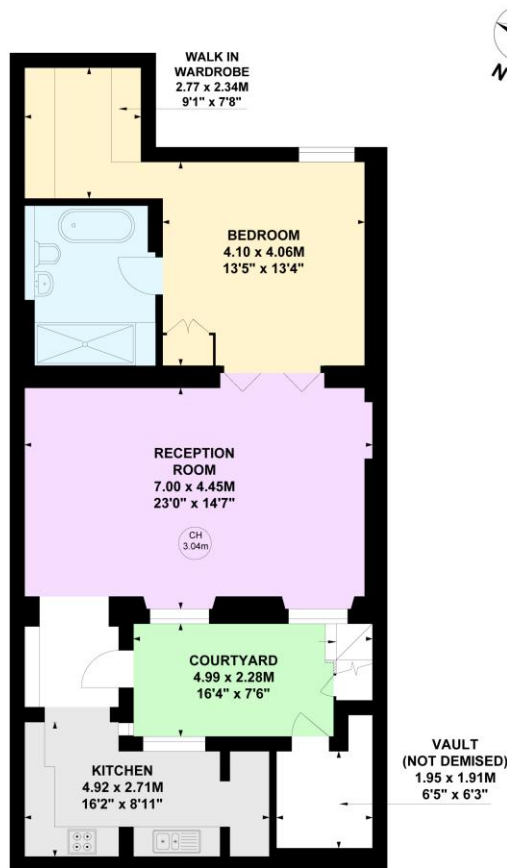
The property is set on the north terrace of Ennismore Gardens, a prestigious garden square in the heart of Knightsbridge, just moments from the open spaces of Hyde Park and a short stroll to the luxury shopping and amenities of Brompton Road and Sloane Street.

**CHESTERTONS**

## Ennismore Gardens, SW7

Approximate gross internal area  
81.50 sq m / 877 sq ft

Key :  
CH - Ceiling Height



### Lower Ground Floor

Not to scale, for guidance only and must not be relied upon as a statement of fact.  
All measurements and areas are approximate only

**Tenure:** Leasehold 91 years 11 months

**Service Charge:** £TBC

**Ground Rent:** A Peppercorn

**Local Authority:** City of Westminster

**Council Tax Band:** H

Energy Efficiency Rating		
	Current	Potential
Very energy efficient - lower running costs		
(32+)	A	
(81-91)	B	
(69-80)	C	
(55-68)	D	
(39-54)	E	
(21-38)	F	
(1-20)	G	
Not energy efficient - higher running costs		
England, Scotland & Wales		
EU Directive 2002/91/EC		
	60	76

## Chestertons Knightsbridge & Belgravia Sales

31 Lowndes St

Knightsbridge

London

SW1X 9HX

knightsbridge@chestertons.co.uk

020 7235 8090

Chesterton UK Services Limited trading as Chestertons for themselves and for the vendor of this property whose agents they are, give notice that (i) these particulars do not constitute any part of an offer or contract, (ii) all statements contained within these particulars are made without responsibility on the part of Chestertons or the vendor, (iii) whilst made in good faith, none of the statements contained within these particulars are to be relied upon as a statement or representation of fact, (iv) any intending purchasers must satisfy themselves by inspection or otherwise as to the correctness of each of the statements contained within these particulars, (v) the vendor does not make or give either Chestertons or any person in their employment any authority to make or give representation or warranty whatsoever in relation to this property. Wide angle lenses may be used. ©Copyright Chestertons | Chesterton UK Services Limited | Registered Office 40 Connaught Street, Hyde Park, London W2 2AB Registered Company Number 05334580.



This paper is  
100% recyclable