



Chesil Court  
Chelsea Manor Street, SW3

CHESTERTONS





This lovely 2 bedroom flat is set on the 7th floor of a secure block, offering a large and bright reception room with access to private terrace, modern fitted kitchen and two generously sized bedrooms.

- 
- Two double bedrooms
  - South facing
  - Porter

Asking Price £685,000

---

**Tenure:** Leasehold 45 years 11 months

**Service Charge:** £11000 Includes sinking fund contribution

**Ground Rent:** £50

**Local Authority:** Royal Borough of Kensington & Chelsea

**Council Tax Band:** G

*Chestertons Knightsbridge & Belgravia Sales*

31 Lowndes St

Knightsbridge

London

SW1X 9HX

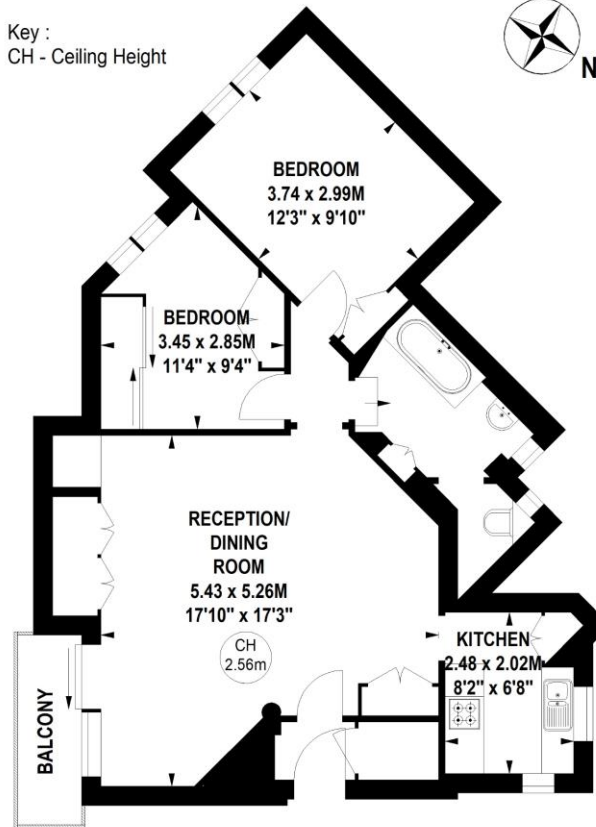
knightsbridge@chestertons.co.uk

020 7235 8090

**Chesil Court,  
Chelsea Manor Street, SW3**

Approximate gross internal area  
63.73 sq m / 686 sq ft

Key :  
CH - Ceiling Height



**Seventh Floor**

Not to scale, for guidance only and must not be relied upon as a statement of fact.  
All measurements and areas are approximate only

Chesterton UK Services Limited trading as Chestertons for themselves and for the vendor of this property whose agents they are, give notice that (i) these particulars do not constitute any part of an offer or contract, (ii) all statements contained within these particulars are made without responsibility on the part of Chestertons or the vendor, (iii) whilst made in good faith, none of the statements contained within these particulars are to be relied upon as a statement or representation of fact, (iv) any intending purchasers must satisfy themselves by inspection or otherwise as to the correctness of each of the statements contained within these particulars, (v) the vendor does not make or give either Chestertons or any person in their employment any authority to make or give representation or warranty whatsoever in relation to this property. Wide angle lenses may be used. ©Copyright Chestertons | Chesterton UK Services Limited | Registered Office 40 Connaught Street, Hyde Park, London W2 2AB Registered Company Number 05334580.



This paper is  
100% recyclable