



Knightsbridge Court
Sloane Street, SW1X

CHESTERTONS



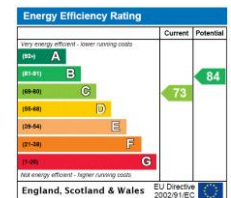


An impressive three double bedroom apartment in this much sought after building on Sloane Street. The apartment, which was refurbished a few years ago to a high standard, is located in a quiet position towards the rear of the building. Knightsbridge Court benefits from portage and a lift.

The flat is in an enviable location being moments from the internationally renowned shops and boutiques on Sloane Street. Harrods and Brompton Road is a short walk away with Hyde Park is also in close proximity.

- First floor
- 3 bedrooms
- Double reception room
- Lift
- Porter

Asking Price £3,000,000



Tenure: Leasehold 976 years 4 months
Service Charge: £14572.02 p.a. i.e. £6,326.01 plus reserve fund £910 for half year
Ground Rent: £400 per annum
Local Authority: Royal Borough of Kensington & Chelsea
Council Tax Band: H

Chestertons Knightsbridge & Belgravia Sales

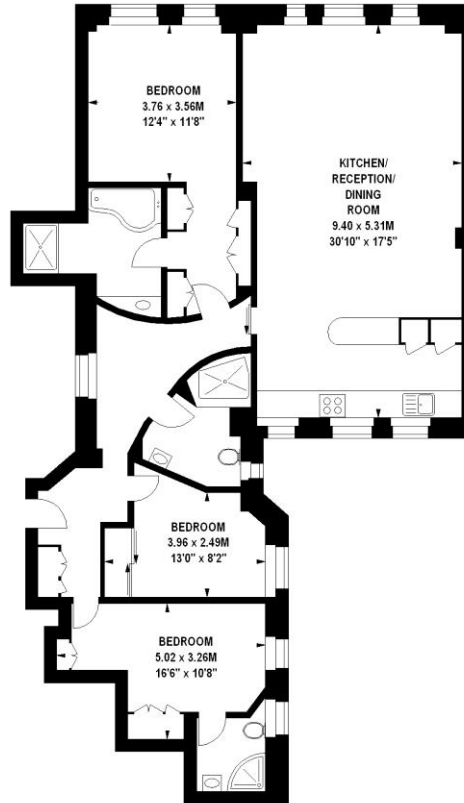
31 Lowndes St
 Knightsbridge
 London
 SW1X 9HX

knightsbridge@chestertons.co.uk
 020 7235 8090

Knightsbridge Court, SW1X

Approximate gross internal area

121.23 sq m / 1305 sq ft



First Floor

The floor plan is not to scale and measurements and areas shown are approximate and therefore should be used for illustrative purposes only. The plan been prepared in accordance with the RICS code of Measuring Practice and whilst we have confidence in the information produced, it must be not be relied on. If there is any aspect of particular importance, you should carry out or commission your own inspection of the property.
Copyright of FeaturePRO.

Chesterton UK Services Limited trading as Chestertons for themselves and for the vendor of this property whose agents they are, give notice that (i) these particulars do not constitute any part of an offer or contract, (ii) all statements contained within these particulars are made without responsibility on the part of Chestertons or the vendor, (iii) whilst made in good faith, none of the statements contained within these particulars are to be relied upon as a statement or representation of fact, (iv) any intending purchasers must satisfy themselves by inspection or otherwise as to the correctness of each of the statements contained within these particulars, (v) the vendor does not make or give either Chestertons or any person in their employment any authority to make or give representation or warranty whatsoever in relation to this property. Wide angle lenses may be used. ©Copyright Chestertons | Chesterton UK Services Limited | Registered Office 40 Connaught Street, Hyde Park, London W2 2AB Registered Company Number 05334580.



This paper is
100% recyclable