



Montpelier Street  
Knightsbridge, SW7

CHESTERTONS







This striking townhouse spans over 2,618 square feet and five floors.

Designed and finished with exceptional attention to detail, the property features private rear garden, a second floor terrace and light wood flooring, as well as four bedrooms and four bathrooms.

With three reception rooms and a kitchen, there is plentiful entertaining and hosting space.

Montpelier Street is one of Knightsbridge's premier addresses and is conveniently located between Brompton Road and Hyde Park.

- Beautifully presented family home
- Wood flooring in the reception
- Private garden
- Perfectly situated between Harrods and Hyde Park

Asking Price £4,995,000

Energy Efficiency Rating		
Energy efficient - lower running costs	Current	Potential
90-100 A		
81-90 B		
71-80 C		
61-70 D		
51-60 E		
41-50 F		
31-40 G		
Not energy efficient - higher running costs		
EU Directive 2002/91/EC		
England, Scotland & Wales		

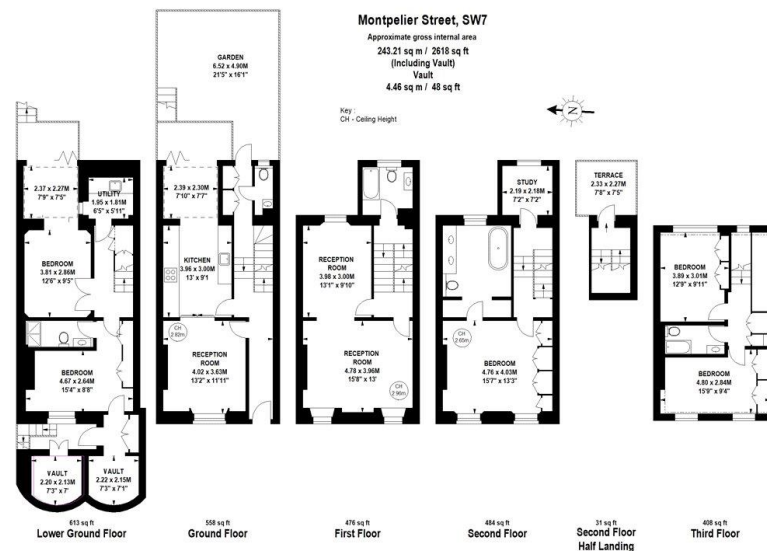
**Tenure:** Freehold  
**Service Charge:** £0  
**Ground Rent:** £0  
**Local Authority:** Westminster  
**Council Tax Band:** H

*Chestertons Knightsbridge & Belgravia Sales*

31 Lowndes St  
 Knightsbridge  
 London  
 SW1X 9HX

knightbridge@chestertons.co.uk  
 020 7235 8090





The floor plan is not to scale and measurements and areas shown are approximate and therefore should be used for illustrative purposes only. The plan has been prepared in accordance with the RICS code of Measuring Practice and whilst we have confidence in the information produced, it must not be relied on. If there is any aspect of particular importance, you should carry out or commission your own inspection of the property.  
Copyright of FeaturePRO.

Chesterton UK Services Limited trading as Chestertons for themselves and for the vendor of this property whose agents they are, give notice that (i) these particulars do not constitute any part of an offer or contract, (ii) all statements contained within these particulars are made without responsibility on the part of Chestertons or the vendor, (iii) whilst made in good faith, none of the statements contained within these particulars are to be relied upon as a statement or representation of fact, (iv) any intending purchasers must satisfy themselves by inspection or otherwise as to the correctness of each of the statements contained within these particulars, (v) the vendor does not make or give either Chestertons or any person in their employment any authority to make or give representation or warranty whatsoever in relation to this property. Wide angle lenses may be used. ©Copyright Chestertons | Chesterton UK Services Limited | Registered Office 40 Connaught Street, Hyde Park, London W2 2AB Registered Company Number 05334580.