



Ennismore Gardens
Knightsbridge, SW7

CHESTERTONS





This exceptional freehold residence has undergone a magnificent transformation. Nestled discreetly alongside The Russian Orthodox Church, its entrance boasts a full frontage, complemented by a secondary access at the rear on Ennismore Mews. Covering an expansive 2,264 square feet (210 sqm), the house features four generously sized double bedrooms, each accompanied by its own en-suite bathroom.

The reception room is adorned with intricate decorations and offers a captivating southerly view along the entire length of the mews. The principal bedroom suite is a true masterpiece, featuring a breath taking south-facing rooftop terrace and an adjoining dressing room that overlooks the mews.

Situated in the highly coveted locations of Ennismore Gardens and Ennismore Mews in the heart of Knightsbridge, this residence provides convenient access to a wealth local amenities, including Hyde Park, prestigious schools, fine dining establishments, and upscale shops. Furthermore, excellent transportation connections enhance the allure of this remarkable property.

- Four bedrooms
- Two bathrooms
- Freehold
- Access from Ennismore Gardens and the Mews
- South facing living room
- Private roof terrace

Asking Price: £4,500,000

Energy Efficiency Rating		
Energy efficient - lower running costs	Current	Potential
90-100 A		
81-90 B		
72-81 C	73	80
63-72 D		
54-63 E		
45-54 F		
35-45 G		
Not energy efficient - higher running costs		
EU Directive 2002/91/EC		

Tenure: Freehold
Local Authority: City of Westminster
Council Tax Band: H

Chestertons Knightsbridge & Belgravia Sales

31 Lowndes St
 Knightsbridge
 London
 SW1X 9HX

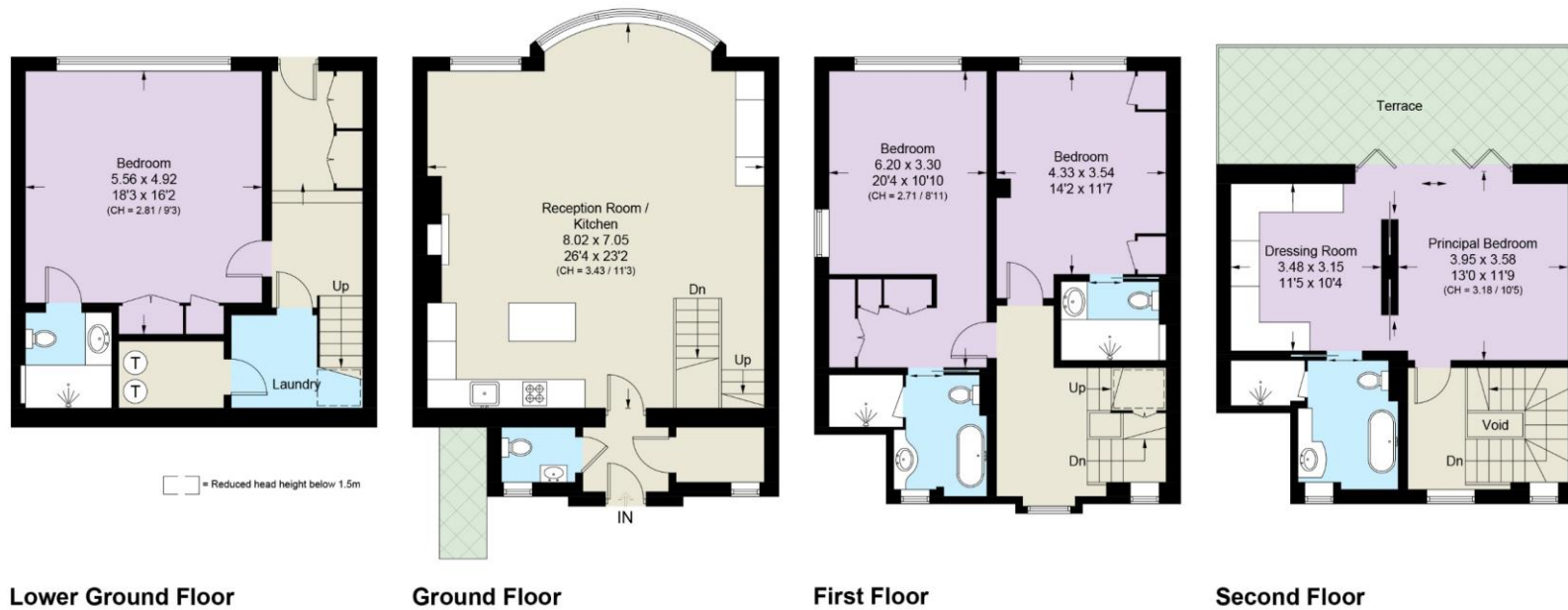
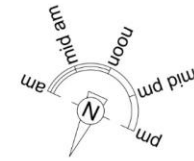
knightbridge@chestertons.co.uk
 020 7235 8090

Ennismore Gardens, SW7

Approximate Area = 2348 sq ft / 218.1 sq m

(Including Void)

Including Limited Use Area (53 sq ft / 4.9 sq m)



This plan is for layout guidance only. Not drawn to scale unless stated. Windows and door openings are approximate. Whilst every care is taken in the preparation of this plan, please check all dimensions, shapes and compass bearings before making any decisions reliant upon them. (ID1051584)

Chesterton Global Ltd trading as Chestertons for themselves and for the vendor of this property whose agents they are, give notice that (i) these particulars do not constitute any part of an offer or contract, (ii) all statements contained within these particulars are made without responsibility on the part of Chestertons or the vendor, (iii) whilst made in good faith, none of the statements contained within these particulars are to be relied upon as a statement or representation of fact, (iv) any intending purchasers must satisfy themselves by inspection or otherwise as to the correctness of each of the statements contained within these particulars, (v) the vendor does not make or give either Chestertons or any person in their employment any authority to make or give representation or warranty whatsoever in relation to this property. Wide angle lenses may be used. ©Copyright Chestertons | Chesterton Global Ltd | Registered Office 40 Connaught Street, Hyde Park, London W2 2AB Registered Company Number 05334580.



This paper is
100% recyclable