



Lexham Mews
Kensington, W8

CHESTERTONS





A charming one bedroom lower ground floor apartment situated in a quaint mews close to Stratford Village. Benefitting from a private entrance and patio garden.

Finished to good standard throughout, the property comprises a large entrance hall, a reception with ample space for dining, separate kitchen leading on to a private patio garden. The bedroom is a large double and benefits from an en-suite bathroom.

Lexham Mews is located in the heart of Kensington and within easy reach of the local shops, restaurants & transport links of Kensington High Street. .

- One Bedroom
- Private Terrace
- Private Entrance
- Stratford Village
- EPC rating E

Asking Price £620,000

Energy Efficiency Rating		Current	Potential
90-100	A		
81-89	B		
72-80	C		77
63-71	D	53	
54-62	E		
45-53	F		
35-44	G		

Not energy efficient - higher running costs

EU Directive 2002/91/EC

England, Scotland & Wales

Tenure: Leasehold 998 years remaining

Service Charge: £850 per annum

Ground Rent: £0

Local Authority: Royal Borough of Kensington and Chelsea

Council Tax Band: F

Chestertons Kensington Sales

116 Kensington High Street

London

W8 7RW

kensington@chestertons.co.uk

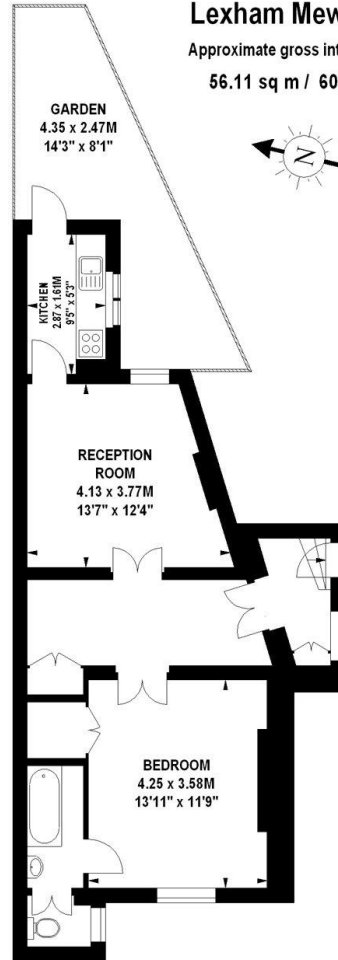
020 7937 7244

chestertons.co.uk

Lexham Mews, W8

Approximate gross internal area

56.11 sq m / 604 sq ft



Lower Ground Floor

The floor plan is not to scale and measurements and areas shown are approximate and therefore should be used for illustrative purposes only. The plan has been prepared in accordance with the RICS code of Measuring Practice and whilst we have confidence in the information produced, it must be not be relied on. If there is any aspect of particular importance, you should carry out or commission your own inspection of the property.
Copyright of FeaturePRO.

