



De Vere Gardens  
Kensington, W8









An absolutely sensational two-bedroom apartment, located in Kensington's De Vere Gardens.

This property has been refurbished to exacting standards and boasts bespoke fixtures and fittings throughout, such as the walk-in wardrobe located on the apartment's mezzanine floor. The property also features three bathrooms, one of which is an en suite, and a study.

Covering approximately 1,922 sq ft., the property benefits from very high ceilings and an abundance of space. In addition to this property's grand scale, it is also perfectly situated moments from both Kensington Gardens and the many amenities of Kensington High Street.

- Two Bedrooms
- Three Bathrooms
- Study
- Walk-in Wardrobe
- 1,922 sq ft

Offers in excess of  
£2,850,000

Energy Efficiency Rating		Current	Potential
Very energy efficient - lower running costs			
90-100	A		
81-90	B		
71-81	C		
61-71	D		
51-61	E		
41-51	F		
31-41	G		
Not energy efficient - higher running costs			
England, Scotland & Wales		EU Directive 2002/91/EC	

**Tenure:** Leasehold 152 years remaining

**Service Charge:** £4,792 per annum

**Ground Rent:** £0

**Local Authority:** Royal Borough of Kensington & Chelsea

**Council Tax Band:** G

*Chestertons Kensington Sales*

116 Kensington High Street

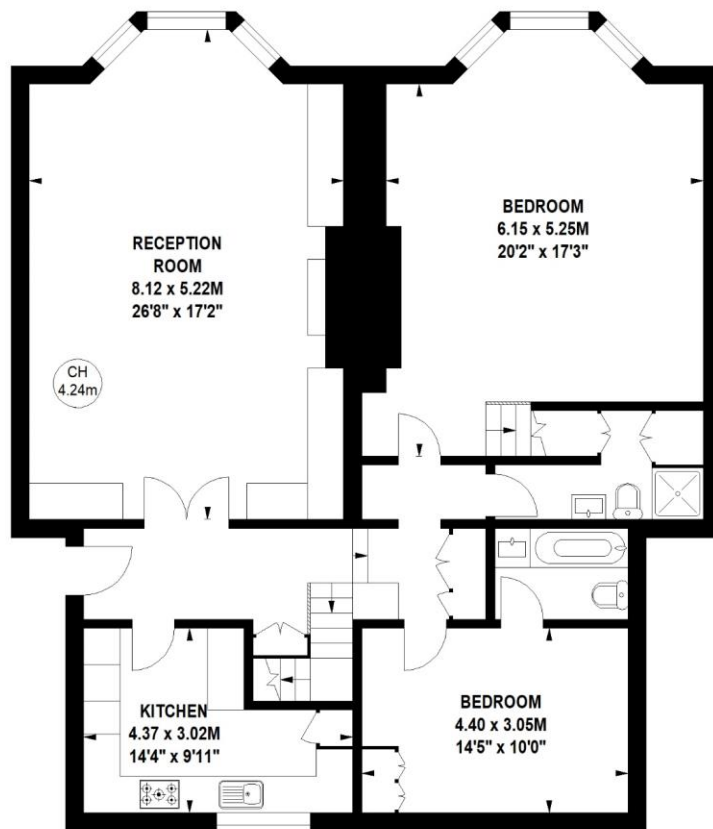
London

W8 7RW

kensington@chestertons.co.uk

020 7937 7244

chestertons.co.uk

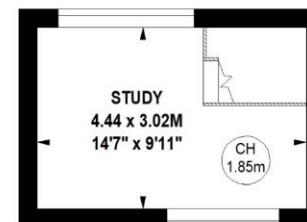


**Ground Floor**

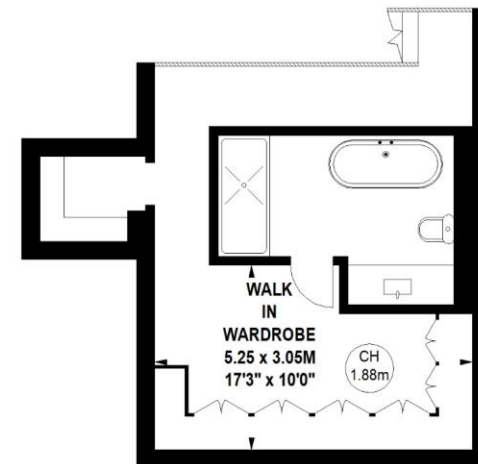
Key :  
CH - Ceiling Height

**Fordham Court,  
De Vere Gardens,  
Kensington, W8**

Approximate gross internal area  
178.55 sq m / 1922 sq ft



**Mezzanine**



**Mezzanine**

Not to scale, for guidance only and must not be relied upon as a statement of fact.  
All measurements and areas are approximate only

