



Drayson Mews
Kensington, W8

CHESTERTONS





An exceptional four-bedroom, three-bathroom mews house with a large integral garage situation in prime Kensington, W8. Entire refurbishment completed in 2023.

The property is set over three floors and accessed directly from the cobbled mews street. Upon entering there is door to the garage on the left, under stair w/c from the hallway and a double bedroom with beautiful en suite.

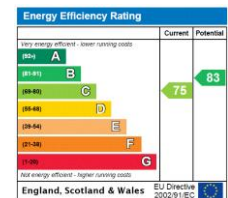
Set on the first floor is the generous semi open plan reception room and kitchen which primarily span the entire width of the building. There is a well-proportioned double bedroom with en suite situated to the quiet rear of the building.

The second floor mainly comprises the south-westerly facing principle bedroom with walk-in wardrobe, fully fitted en suite with double sink unit and large private terrace. There is also a smaller guest bedroom/study to the rear of this floor.

The property is located on popular Drayson Mews moments from Kensington High Street. There are public gardens a short stroll away near to St. Mary Abbots church. Transport to and from Central London are moments away by tube station or via the A4 and A40 for motorists.

- Exceptional finish - completed in 2023
- Solid oak flooring
- Four bedrooms
- South west facing terrace
- Three en suite bathrooms
- Large integral garage

Asking Price £2,650,000



Tenure: Freehold

Service Charge: £0

Ground Rent: £0

Local Authority: Royal Borough of Kensington & Chelsea

Council Tax Band: F

Chestertons Kensington Sales

116 Kensington High Street

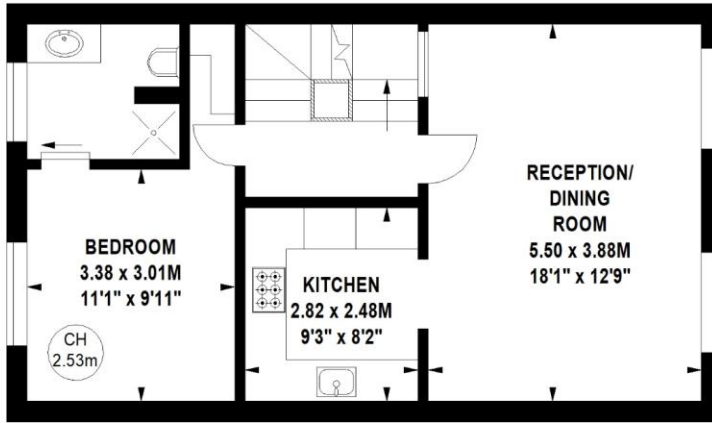
London

W8 7RW

kensington@chestertons.co.uk

020 7937 7244

chestertons.co.uk



First Floor

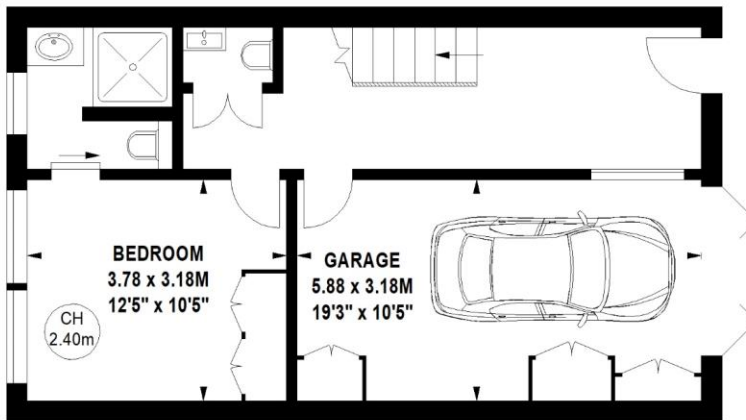
Drayson Mews, W8

Approximate gross internal area

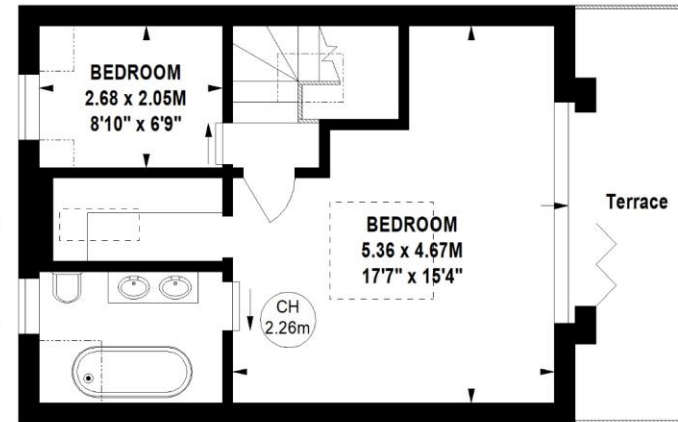
147.34 sq m / 1586 sq ft



Key :
CH - Ceiling Height



Ground Floor



Second Floor

Not to scale, for guidance only and must not be relied upon as a statement of fact.
All measurements and areas are approximate only

