



The Colonnades
34 Porchester Square, W2

CHESTERTONS

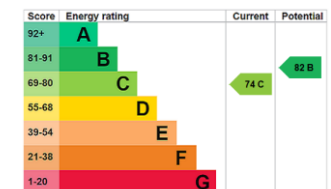




Arranged over the first and second floors, this well-presented 1,144 sq ft duplex apartment is set within a well-maintained purpose-built, portered building with lift, located on Porchester Square, which benefits from communal gardens. The property offers three bedrooms, a family bathroom, and a separate guest WC, along with a generous reception room and a distinct dining area. Recently redecorated throughout and benefiting from a newly fitted kitchen, the apartment combines practical living space with a clean, contemporary finish. Ideally positioned close to excellent transport links, including Royal Oak, Queensway, and Paddington stations, and within easy reach of the shops, restaurants, and amenities along Queensway, as well as the ongoing Whiteley redevelopment. A turnkey home in a prime Bayswater location and a must see.

- 1,144 sq ft
- Duplex apartment
- Three bedrooms
- Family bathroom
- Guest WC
- Separate dining room

Asking Price £850,000



Tenure: Leasehold 122 years 8 months (28/09/2148)

Service Charge: Approximately £6,000 per annum

Ground Rent: None

Local Authority: City of Westminster

Council Tax Band: F

Chestertons Hyde Park & Marylebone Sales

40 Connaught Street

London

W2 2AB

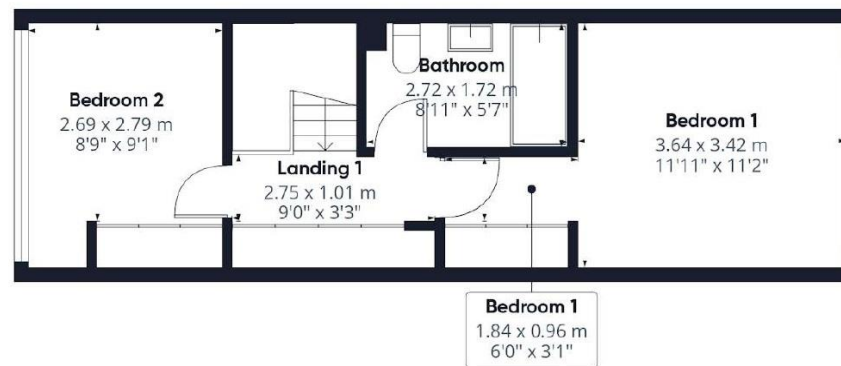
hydepark@chestertons.co.uk

020 7298 5900

chestertons.co.uk



Floor 0



Floor 1

GLA⁽¹⁾
106.26 m²
1143.77 ft²

Total
106.26 m²
1143.77 ft²

Chesterton UK Services Limited trading as Chestertons for themselves and for the vendor of this property whose agents they are, give notice that (i) these particulars do not constitute any part of an offer or contract, (ii) all statements contained within these particulars are made without responsibility on the part of Chestertons or the vendor, (iii) whilst made in good faith, none of the statements contained within these particulars are to be relied upon as a statement or representation of fact, (iv) any intending purchasers must satisfy themselves by inspection or otherwise as to the correctness of each of the statements contained within these particulars, (v) the vendor does not make or give either Chestertons or any person in their employment any authority to make or give representation or warranty whatsoever in relation to this property. Wide angle lenses may be used. ©Copyright Chestertons | Chesterton UK Services Limited | Registered Office 40 Connaught Street, Hyde Park, London W2 2AB Registered Company Number 05334580.