



Hyde Park Gardens
London, W2

CHESTERTONS





This beautifully proportioned 644 sq ft south-facing one-bedroom apartment is situated on the third floor of an elegant period stucco-fronted building in Hyde Park Gardens. Offered in good condition throughout, it enjoys panoramic views over Hyde Park and benefits from a lift and porter for added convenience and security. Residents also have gated off-street parking and exclusive access to private communal gardens, all within one of central London's most prestigious and sought-after settings.

- 644 sq ft
- South facing
- Panoramic park views
- Third floor
- Period stucco building
- Lift and porter
- Gated parking
- Private garden access

Asking Price £1,000,000

Score	Energy rating	Current	Potential
92+	A		
81-91	B		
69-80	C	73 C	80 C
55-68	D		
39-54	E		
21-38	F		
1-20	G		

Tenure: Leasehold 974 Years (22/06/3000)

Service Charge: £8,964.36 per annum including reserve fund contributions

Ground Rent: None

Local Authority: City of Westminster

Council Tax Band: G

Chestertons Hyde Park & Marylebone Sales

40 Connaught Street

London

W2 2AB

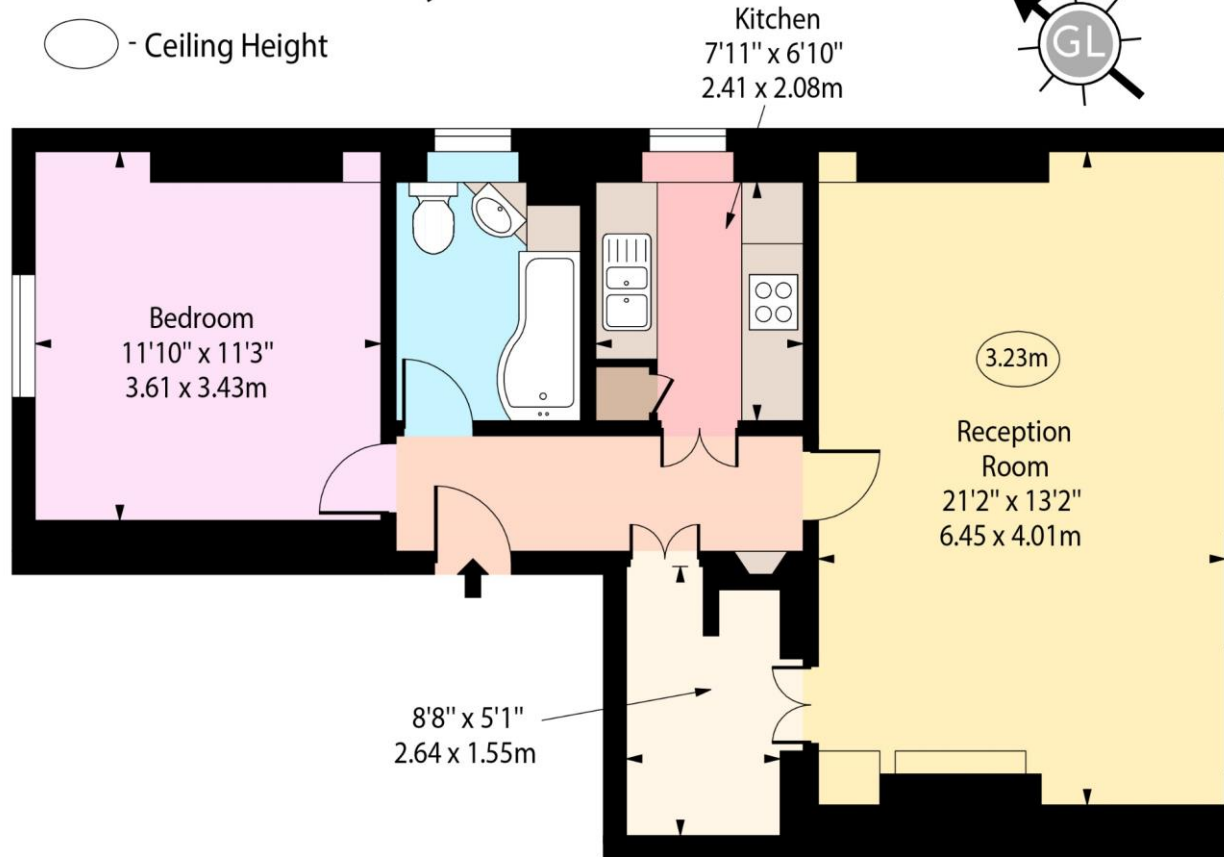
hydepark@chestertons.co.uk

020 7298 5900

chestertons.co.uk

Hyde Park Gardens, W2

○ - Ceiling Height



Third Floor

Approx Gross Internal Area 644 Sq Ft - 59.83 Sq M

Every attempt has been made to ensure the accuracy of the floor plan shown.
However, all measurements, fixtures, fittings, and data shown are approximate interpretations and
for illustrative purposes only. Measured according to the RICS. Not To Scale.

www.goldlens.co.uk

Ref. No. 029859E

Chesterton UK Services Limited trading as Chestertons for themselves and for the vendor of this property whose agents they are, give notice that (i) these particulars do not constitute any part of an offer or contract, (ii) all statements contained within these particulars are made without responsibility on the part of Chestertons or the vendor, (iii) whilst made in good faith, none of the statements contained within these particulars are to be relied upon as a statement or representation of fact, (iv) any intending purchasers must satisfy themselves by inspection or otherwise as to the correctness of each of the statements contained within these particulars, (v) the vendor does not make or give either Chestertons or any person in their employment any authority to make or give representation or warranty whatsoever in relation to this property. Wide angle lenses may be used. ©Copyright Chestertons | Chesterton UK Services Limited | Registered Office 40 Connaught Street, Hyde Park, London W2 2AB Registered Company Number 05334580.



This paper is
100% recyclable