



# Hyde Park Square

Hyde Park, W2

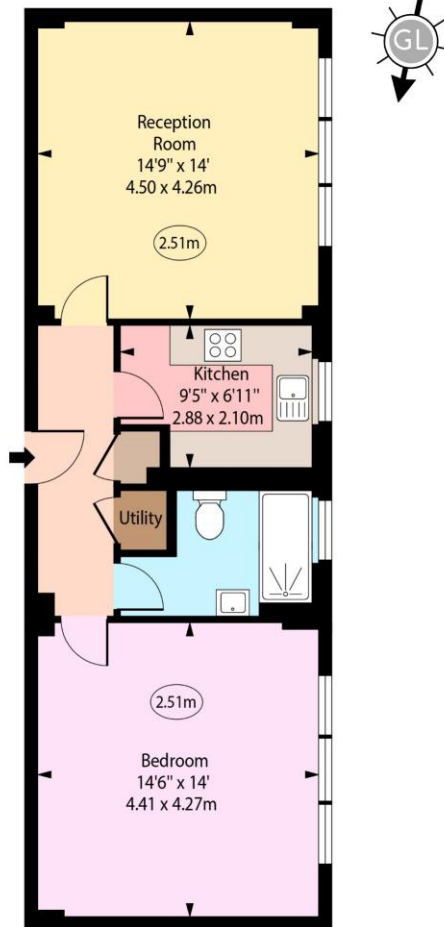
Asking Price £595,000

This stunning newly refurbished one-bedroom ground floor flat, spanning 615 sq ft, is located in a prestigious building on Hyde Park Square, W2. With elegant wood flooring throughout, the property offers a bright and spacious living space.

**CHESTERTONS**

## Hyde Park Square, W2

○ - Ceiling Height



Ground Floor

Approx Gross Internal Area 615 Sq Ft - 57.13 Sq M

For Illustration Purposes Only - Not To Scale

[www.goldlens.co.uk](http://www.goldlens.co.uk)

Ref. No. 025717R

**Tenure:** Leasehold 124 years 2 months

**Service Charge:** £8377.52 Including Reserve Fund contribution

**Ground Rent:** None

**Local Authority:** Westminster

**Council Tax Band:** G

Energy Efficiency Rating		
	Current	Potential
Very energy efficient - lower running costs		
(92+) <b>A</b>		
(81-91) <b>B</b>		
(69-80) <b>C</b>	75	78
(55-68) <b>D</b>		
(39-54) <b>E</b>		
(21-38) <b>F</b>		
(1-20) <b>G</b>		
Not energy efficient - higher running costs		
England, Scotland & Wales		
EU Directive 2002/91/EC		

### Chestertons Hyde Park & Marylebone Sales

40 Connaught Street

London

W2 2AB

[hydepark@chestertons.co.uk](mailto:hydepark@chestertons.co.uk)

020 7298 5900

[chestertons.co.uk](http://chestertons.co.uk)

Chesterton UK Services Limited trading as Chestertons for themselves and for the vendor of this property whose agents they are, give notice that (i) these particulars do not constitute any part of an offer or contract, (ii) all statements contained within these particulars are made without responsibility on the part of Chestertons or the vendor, (iii) whilst made in good faith, none of the statements contained within these particulars are to be relied upon as a statement or representation of fact, (iv) any intending purchasers must satisfy themselves by inspection or otherwise as to the correctness of each of the statements contained within these particulars, (v) the vendor does not make or give either Chestertons or any person in their employment any authority to make or give representation or warranty whatsoever in relation to this property. Wide angle lenses may be used. ©Copyright Chestertons | Chesterton UK Services Limited | Registered Office 40 Connaught Street, Hyde Park, London W2 2AB Registered Company Number 05334580.



This paper is  
100% recyclable