



Raynham
Norfolk Crescent, W2





Situated on the ninth floor of the sought-after Raynham building on Norfolk Crescent, W2, this well-presented lateral apartment offers 1,555 sq ft of thoughtfully arranged living space. Boasting four generously sized bedrooms and a spacious south-west facing reception-dining room, the property is flooded with natural light through large windows that frame impressive open views. The apartment benefits from lift access, a porter, and access to beautifully maintained private communal gardens. Ideally located near Connaught Village, Hyde Park, and Paddington Station, this home combines tranquillity and convenience in one of central London's most desirable areas.

- 4 double bedrooms
- 1,555 sq ft
- Ninth floor position
- South-west facing aspect
- Lateral apartment layout
- Large bright windows
- Far-reaching open views
- Porter and lift
- Private communal gardens
- Well presented throughout
- Near Connaught Village
- Close to Hyde Park

Asking Price £2,150,000

Score	Energy rating	Current	Potential
92+	A		
81-91	B		
69-80	C	73 C	84 B
55-68	D		
39-54	E		
21-38	F		
1-20	G		

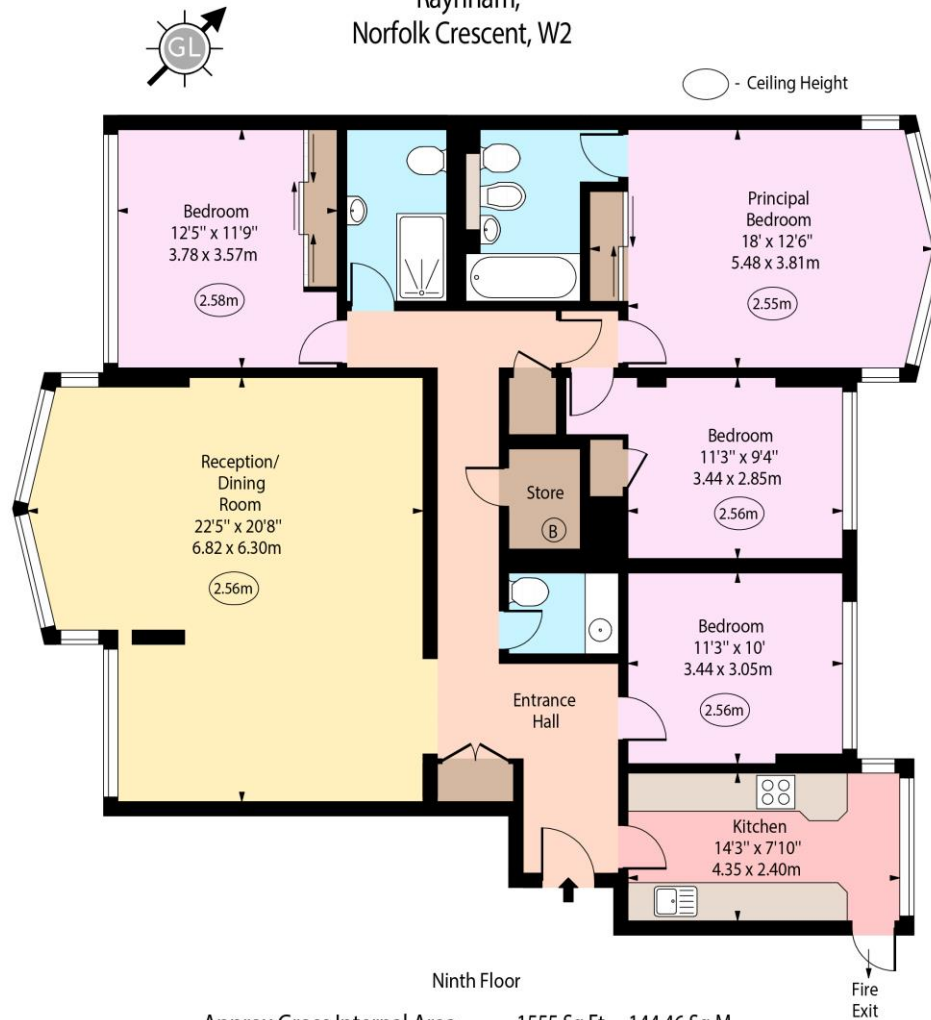
Tenure: Share of Freehold with 978 Year Lease (22/10/3003)
Service Charge: £15,286 including reserve fund contributions
Ground Rent: None
Local Authority: City of Westminster
Council Tax Band: H

Chestertons Hyde Park & Marylebone Sales

40 Connaught Street
 London
 W2 2AB

hydepark@chestertons.co.uk
 020 7298 5900
chestertons.co.uk

Raynham,
Norfolk Crescent, W2



Approx Gross Internal Area 1555 Sq Ft - 144.46 Sq M

Every attempt has been made to ensure the accuracy of the floor plan shown.
However, all measurements, fixtures, fittings, and data shown are approximate interpretations and
for illustrative purposes only. Measured according to the RICS. Not To Scale.
www.goldlens.co.uk
Ref. No. 028778J

Chesterton UK Services Limited trading as Chestertons for themselves and for the vendor of this property whose agents they are, give notice that (i) these particulars do not constitute any part of an offer or contract, (ii) all statements contained within these particulars are made without responsibility on the part of Chestertons or the vendor, (iii) whilst made in good faith, none of the statements contained within these particulars are to be relied upon as a statement or representation of fact, (iv) any intending purchasers must satisfy themselves by inspection or otherwise as to the correctness of each of the statements contained within these particulars, (v) the vendor does not make or give either Chestertons or any person in their employment any authority to make or give representation or warranty whatsoever in relation to this property. Wide angle lenses may be used. ©Copyright Chestertons | Chesterton UK Services Limited | Registered Office 40 Connaught Street, Hyde Park, London W2 2AB Registered Company Number 05334580.

