



Lanchester Court
Seymour Street, W2

CHESTERTONS





Welcome to luxury living in the heart of London! Presenting a meticulously designed 2nd-floor lateral apartment on Seymour Street, offering 1983 sqft of elegance.

This South-facing residence boasts 10 sash windows, bathing the space in natural light. The high-end refurbishment by the current owners seamlessly combines classic charm with contemporary luxury. The Miele-equipped kitchen, four bedrooms, and spacious double reception room provide a perfect balance of style and functionality.

Additional features include air-conditioning, Lutron lighting, a lift for convenience, and a live-in porter for security. Located near Hyde Park, Marble Arch Underground Station, and the West End, this property offers a prime London lifestyle.

Don't miss the chance to make this exquisite residence your own. Contact us for a private viewing and experience luxury living on Seymour Street.

- Lateral Living
- Lift & Porter
- 1983 Sqft
- Air Conditioning
- 10 South Facing Windows
- High End Refurb
- Miele Kitchen Appliances
- 4 Beds - 2 Baths
- Large Reception
- Close to Hyde Park
- Close to Marble Arch

Asking Price £3,650,000

Energy Efficiency Rating		
Energy efficient - lower rating code	Current	Potential
95-100 A		
81-94 B		
69-80 C	75	82
55-68 D		
39-54 E		
21-38 F		
1-20 G		
Not energy efficient - higher rating code		
EU Directive 2002/91/EC		

Tenure: Leasehold 91 years (20/06/2116)

Service Charge: £10,264.80 inc building insurance, porter, heating, insurance, cleaning communal areas & bin collection

Ground Rent: Peppercorn

Local Authority: City Of Westminster

Council Tax Band: G

Chestertons Hyde Park & Marylebone Sales

40 Connaught Street

London

W2 2AB

hydepark@chestertons.co.uk

020 7298 5900

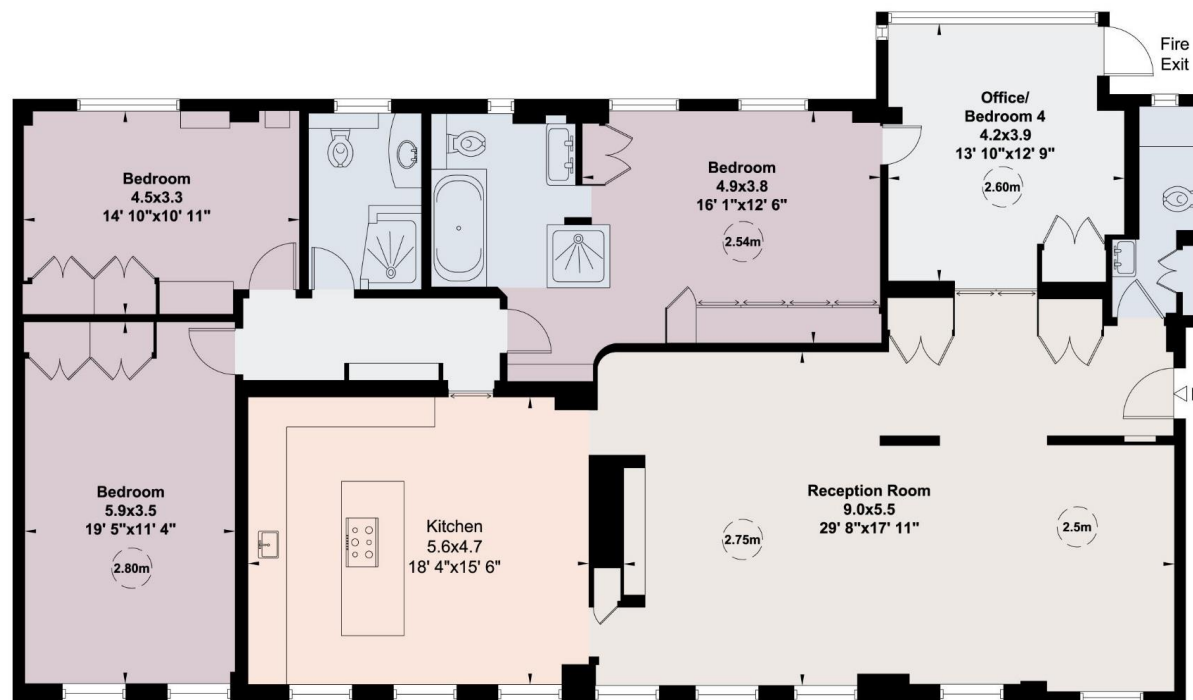
chestertons.co.uk

Lanchester Court, Seymour Street, W2

Gross internal area (approx.)

184 Sq m (1983 Sq ft)

For identification only, Not to Scale



Second Floor

For guidance only and must not be relied upon as a statement of fact.

All measurements and areas are approximate only (and have been prepared in accordance with the current edition of the RICS Code of Measuring Practice).



Chesterton Global Ltd trading as Chestertons for themselves and for the vendor of this property whose agents they are, give notice that (i) these particulars do not constitute any part of an offer or contract, (ii) all statements contained within these particulars are made without responsibility on the part of Chestertons or the vendor, (iii) whilst made in good faith, none of the statements contained within these particulars are to be relied upon as a statement or representation of fact, (iv) any intending purchasers must satisfy themselves by inspection or otherwise as to the correctness of each of the statements contained within these particulars, (v) the vendor does not make or give either Chestertons or any person in their employment any authority to make or give representation or warranty whatsoever in relation to this property. Wide angle lenses may be used. ©Copyright Chestertons | Chesterton Global Ltd | Registered Office 40 Connaught Street, Hyde Park, London W2 2AB Registered Company Number 05334580.



This paper is
100% recyclable