



Porchester Gate

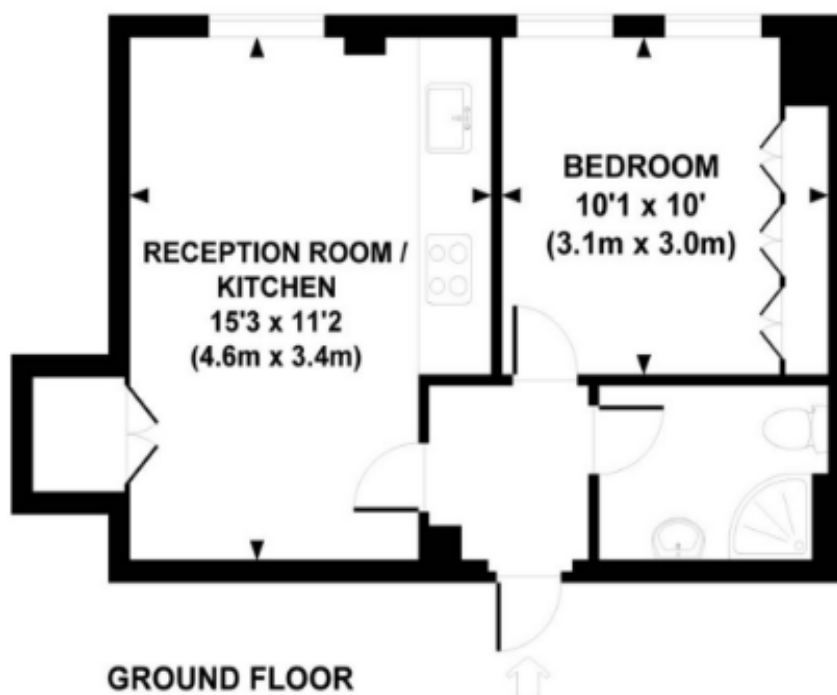
Hyde Park, W2

Offers In Excess Of £450,000

This charming one-bedroom apartment is located on the ground floor of a highly sought-after, portered building, directly facing the iconic Hyde Park.

CHESTERTONS

Approx. gross internal area
373 Sq.Ft. / 34.7 Sq.M.



Tenure: Leasehold 948 years 11 months Expires (25/03/2974)

Service Charge: £3,300 P.A.

Ground Rent: £100

Local Authority: City of Westminster

Council Tax Band: E

Energy Efficiency Rating		
	Current	Potential
Very energy efficient - lower running costs		
(92+) A		
(81-91) B		
(69-80) C	73	76
(55-68) D		
(39-54) E		
(21-38) F		
(1-20) G		
Not energy efficient - higher running costs		
England, Scotland & Wales		
EU Directive 2002/91/EC		

Chestertons Hyde Park & Marylebone Sales

40 Connaught Street

London

W2 2AB

hydepark@chestertons.co.uk

020 7298 5900

[chestertons.co.uk](https://www.chestertons.co.uk)

Chesterton UK Services Limited trading as Chestertons for themselves and for the vendor of this property whose agents they are, give notice that (i) these particulars do not constitute any part of an offer or contract, (ii) all statements contained within these particulars are made without responsibility on the part of Chestertons or the vendor, (iii) whilst made in good faith, none of the statements contained within these particulars are to be relied upon as a statement or representation of fact, (iv) any intending purchasers must satisfy themselves by inspection or otherwise as to the correctness of each of the statements contained within these particulars, (v) the vendor does not make or give either Chestertons or any person in their employment any authority to make or give representation or warranty whatsoever in relation to this property. Wide angle lenses may be used. ©Copyright Chestertons | Chesterton UK Services Limited | Registered Office 40 Connaught Street, Hyde Park, London W2 2AB Registered Company Number 05334580.



This paper is
100% recyclable