



Marlow House

Hallfield Estate, W2

Asking Price £595,000

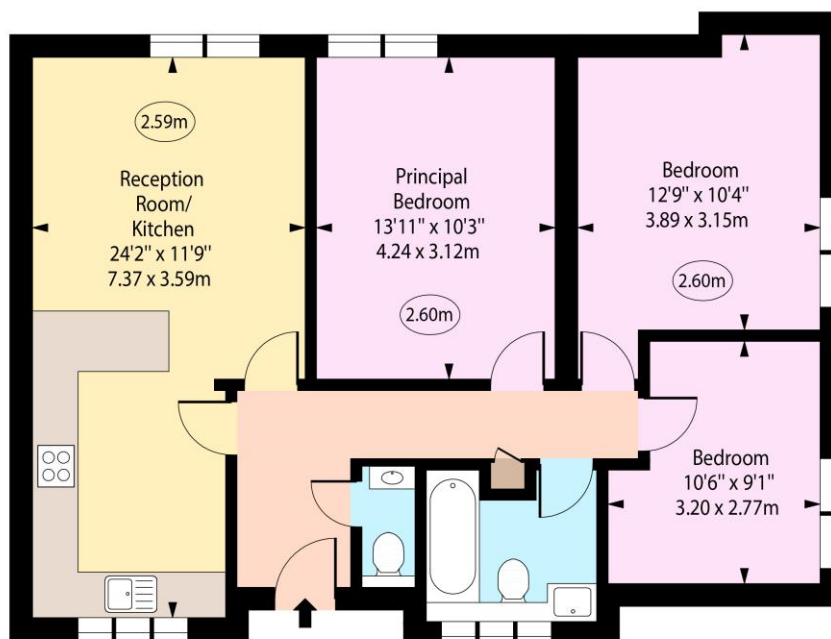
This beautifully presented three-bedroom, set on the very edge of Hallfield Estate opposite Porchester Square and Inverness Terrace. The Grade II listed building designed by Berthold Lubetkin and Tecton, combining timeless post-war architecture with expansive communal green spaces, recently underwent a major renovation.

CHESTERTONS

Marlow House,
Hallfield Estate, W2



○ - Ceiling Height



First Floor

Approx Gross Internal Area 808 Sq Ft - 75.06 Sq M

For Illustration Purposes Only - Not To Scale
www.goldlens.co.uk
Ref. No. 027283R

Tenure: Leasehold 86 years 2 months Expires (01/07/2111)

Service Charge: £3204.21 P.A.

Ground Rent: £10 P.A.

Local Authority: City of Westminster

Council Tax Band: D

Energy Efficiency Rating		
	Current	Potential
Very energy efficient - lower running costs		
(92+) A		
(81-91) B		
(69-80) C	79	79
(55-68) D		
(39-54) E		
(21-38) F		
(1-20) G		
Not energy efficient - higher running costs		
England, Scotland & Wales		
EU Directive 2002/91/EC		

Chestertons Hyde Park & Marylebone Sales

40 Connaught Street

London

W2 2AB

hydepark@chestertons.co.uk

020 7298 5900

chestertons.co.uk

Chesterton UK Services Limited trading as Chestertons for themselves and for the vendor of this property whose agents they are, give notice that (i) these particulars do not constitute any part of an offer or contract, (ii) all statements contained within these particulars are made without responsibility on the part of Chestertons or the vendor, (iii) whilst made in good faith, none of the statements contained within these particulars are to be relied upon as a statement or representation of fact, (iv) any intending purchasers must satisfy themselves by inspection or otherwise as to the correctness of each of the statements contained within these particulars, (v) the vendor does not make or give either Chestertons or any person in their employment any authority to make or give representation or warranty whatsoever in relation to this property. Wide angle lenses may be used. ©Copyright Chestertons | Chesterton UK Services Limited | Registered Office 40 Connaught Street, Hyde Park, London W2 2AB Registered Company Number 05334580.



This paper is
100% recyclable