



Westbourne Terrace
Hyde Park, W2





This exceptional six-bedroom, five-bathroom residence spans an impressive 4,940 sq ft across four meticulously designed floors—lower ground, ground, first, and second. Situated on the leafy Westbourne Terrace in a handsome white stucco building, the property exudes classic elegance with modern comforts. Boasting soaring ceilings of 3.86m on the ground floor and an impressive 4.22m on the first, the home is both grand and airy. The lower ground floor can function as a fully self-contained two-bedroom apartment with its own patio garden, offering flexibility for multi-generational living or rental income. The main living areas include two elegant reception rooms, a formal dining room, and a large, modern kitchen with a breakfast/dining area. The first-floor master suite is a standout feature, offering a generous walk-in wardrobe, an expansive en-suite bathroom, and direct access to a private balcony. Additional outdoor spaces include two terraces, a patio garden, and a balcony, enhancing the indoor-outdoor living experience. The property benefits from its own private street side entrance, an allocated parking space, and a highly desirable 999-year lease alongside the freehold, which provides additional income. Ideally located near Hyde Park, Paddington Station, and Queensway, this distinguished home offers both prestige and convenience in one of London's most sought-after locations.

- 4940 Sqft
- Parking
- High Ceilings
- 6 Bed, 5 Bath
- Outside Space
- Master Suite
- 2 Kitchens
- Private Entrance
- Freehold Included
- Close to Hyde Park
- Close to Paddington

Asking Price £7,500,000

Energy Efficiency Rating		
Energy efficient - lower running costs	Current	Potential
90-100 A		
81-89 B		
69-80 C	71	78
55-68 D		
49-54 E		
45-48 F		
35-44 G		
Not energy efficient - higher running costs		
EU Directive 2002/91/EC		

Tenure: Freehold plus 999 year lease

Service Charge: Approximately £21,000 per annum

Ground Rent: None

Local Authority: City of Westminster

Council Tax Band: H

Chestertons Hyde Park & Marylebone Sales

40 Connaught Street

London

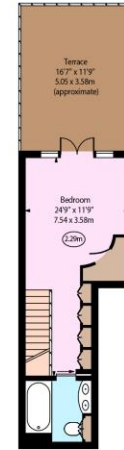
W2 2AB

hydepark@chestertons.co.uk

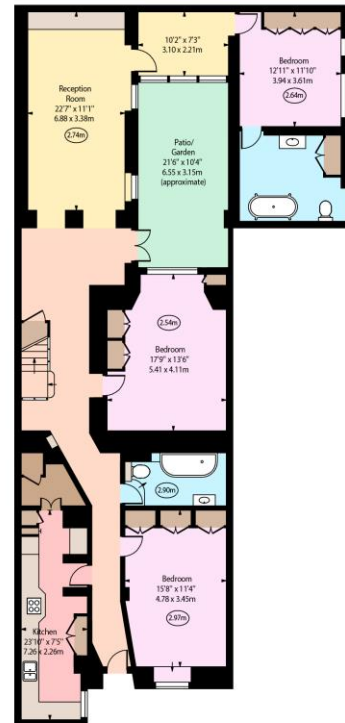
020 7298 5900

chestertons.co.uk

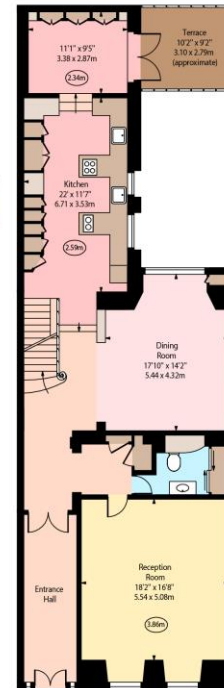
Westbourne Terrace, W2



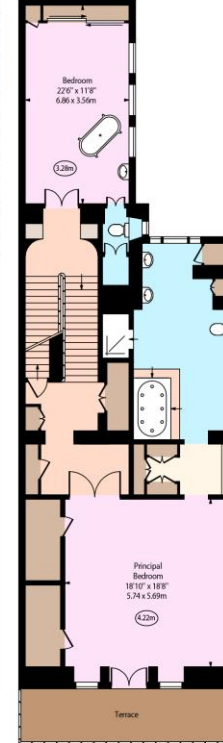
Second Floor



Lower Ground Floor



Ground Floor



First Floor

Approx Gross Internal Area 4940 Sq Ft - 458.93 Sq M
For Illustration Purposes Only - Not To Scale
www.goldens.co.uk
Ref. No. 027018CH

Chesterton UK Services Limited trading as Chestertons for themselves and for the vendor of this property whose agents they are, give notice that (i) these particulars do not constitute any part of an offer or contract, (ii) all statements contained within these particulars are made without responsibility on the part of Chestertons or the vendor, (iii) whilst made in good faith, none of the statements contained within these particulars are to be relied upon as a statement or representation of fact, (iv) any intending purchasers must satisfy themselves by inspection or otherwise as to the correctness of each of the statements contained within these particulars, (v) the vendor does not make or give either Chestertons or any person in their employment any authority to make or give representation or warranty whatsoever in relation to this property. Wide angle lenses may be used. ©Copyright Chestertons | Chesterton UK Services Limited | Registered Office 40 Connaught Street, Hyde Park, London W2 2AB Registered Company Number 05334580.



This paper is
100% recyclable