



Portland Place
Marylebone, W1B





Situated in a prestigious portered mansion block at the northern end of Portland Place, this elegantly proportioned ground and lower ground floor apartment offers a perfect blend of classic charm and modern living, just moments from Regent's Park.

The two-bedroom split-level apartment features generous ceiling heights and exquisite period detailing throughout.

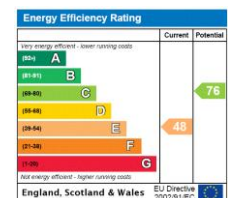
On the ground floor, a spacious marble-floored entrance hall leads to the impressive main reception room at the front of the property, which flows seamlessly into the dining area, TV lounge, and well-equipped kitchen ideal for both entertaining and day-to-day living.

The lower ground floor offers further spacious accommodation, including two double bedrooms, both with en-suite bathrooms and built-in storage. One bedroom is positioned at the front of the building, while the other is located at the rear.

The property is ideally located, with easy access to the chic boutiques and restaurants of Marylebone Village, the expansive greenery of Regent's Park, and the vibrant shopping and entertainment of the West End. Regents Park Underground Station is also just a short walk away, providing excellent transport links.

- Portland Place
- Porter
- Mansion Block
- 2 Bedrooms, 2 Bathrooms
- 2 Reception Rooms
- 1590 sqft

Asking Price £1,800,000



Tenure: Leasehold 88 years 7 months (01/10/2113)

Service Charge: £12,000 per annum

Ground Rent: £0

Local Authority: Westminster

Council Tax Band: H

Chestertons Hyde Park & Marylebone Sales

40 Connaught Street

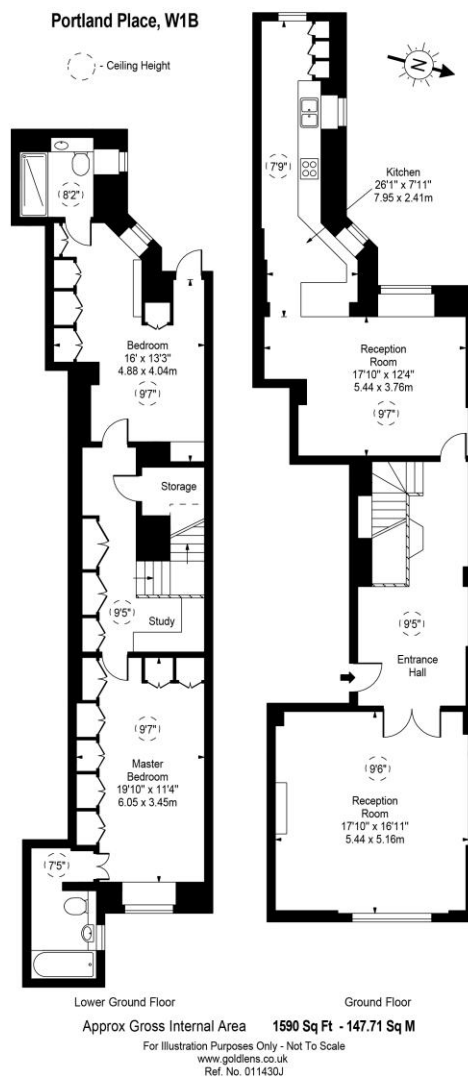
London

W2 2AB

hydepark@chestertons.co.uk

020 7298 5900

chestertons.co.uk



Chesterton UK Services Limited trading as Chestertons for themselves and for the vendor of this property whose agents they are, give notice that (i) these particulars do not constitute any part of an offer or contract, (ii) all statements contained within these particulars are made without responsibility on the part of Chestertons or the vendor, (iii) whilst made in good faith, none of the statements contained within these particulars are to be relied upon as a statement or representation of fact, (iv) any intending purchasers must satisfy themselves by inspection or otherwise as to the correctness of each of the statements contained within these particulars, (v) the vendor does not make or give either Chestertons or any person in their employment any authority to make or give representation or warranty whatsoever in relation to this property. Wide angle lenses may be used. ©Copyright Chestertons | Chesterton UK Services Limited | Registered Office 40 Connaught Street, Hyde Park, London W2 2AB Registered Company Number 05334580.

