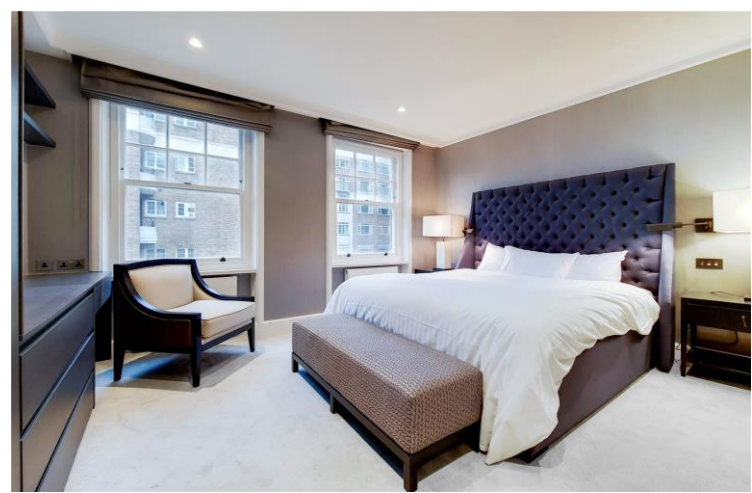




Cumberland Mansions
George Street, W1H

CHESTERTONS





Situated on the third floor of the prestigious Cumberland Mansions, this exceptional lateral apartment spans 2,423 sq ft and offers refined living in the heart of Marylebone. Set within a handsome red-brick mansion block with a resident porter, the property boasts four generously sized ensuite bedrooms, a guest WC, two elegant reception rooms, and a formal dining room, perfect for entertaining. The beautifully appointed kitchen is fitted with high-end Miele appliances, complementing the luxurious finish throughout. Two private balconies provide charming outdoor space, while the apartment's prime location places it moments from Hyde Park, Oxford Street, and excellent transport links, ensuring the best of London living at your doorstep.

- Third-floor lateral apartment
- 2,423 sq ft
- Prestigious mansion block
- Resident porter
- Four ensuite bedrooms
- Two reception rooms
- Formal dining room
- High-spec kitchen & Miele appliances
- Two private balconies
- Luxury finishes throughout
- Close to Hyde Park & Oxford Street
- Excellent transport links

Asking Price £4,250,000

Energy Efficiency Rating		
Very energy efficient - lower running costs	Current	Potential
90-100 A		
81-89 B		
72-80 C		
63-71 D		
55-62 E		
48-54 F		
35-47 G		
Not energy efficient - higher running costs		
England, Scotland & Wales		
EU Directive 2002/91/EC		

Tenure: Leasehold 102 Years Unexpired (15/12/2127)

Service Charge: £9760 per annum

Ground Rent: None

Local Authority: Westminster

Council Tax Band: G

Chestertons Hyde Park & Marylebone Sales

40 Connaught Street

London

W2 2AB

hydepark@chestertons.co.uk

020 7298 5900

chestertons.co.uk

