



Hyde Park Square  
Hyde Park, W2

CHESTERTONS









This elegant 2,000-square-foot lateral apartment is situated in a handsome stucco-fronted building with porter service and lift access, offering convenience and a high standard of living. Recently subject to a light refurbishment and redecoration, the property presents beautifully, with well-maintained interiors and stylish herringbone wood floors that lend a touch of sophistication. Bathed in natural light thanks to its south-facing orientation, the apartment features three spacious bedrooms and three modern bathrooms, catering effortlessly to both family life and entertaining. Residents enjoy exclusive access to the beautifully landscaped communal gardens of Hyde Park Square and Gloucester Square, perfect for relaxation and outdoor enjoyment. Ideally positioned close to Hyde Park and within easy reach of Paddington Station, this home offers the ultimate blend of city accessibility and a serene green retreat.

- Elegant 2,000 sq ft
- Stucco-fronted building with porter
- Lift access for convenience
- South-facing, natural light
- Stylish herringbone wood floors
- Three bedrooms, three bathrooms
- Exclusive communal gardens access
- Near Hyde Park, Paddington Station

Asking Price £3,500,000

Energy Efficiency Rating		
Energy efficiency class	Current	Potential
A (94-100)		
B (81-93)		
C (69-80)		
D (55-68)		
E (39-54)		
F (21-38)		
G (1-20)		
Not energy efficient - higher running costs		
EU Directive 2002/91/EC		
England, Scotland & Wales		

**Tenure:** Share of Freehold with 978 Year Lease (25/12/3003)

**Service Charge:** £13,128.74 per annum (Includes reserve fund contributions)

**Ground Rent:** None

**Local Authority:** City Of Westminster

**Council Tax Band:** H

*Chestertons Hyde Park & Marylebone Sales*

40 Connaught Street

London

W2 2AB

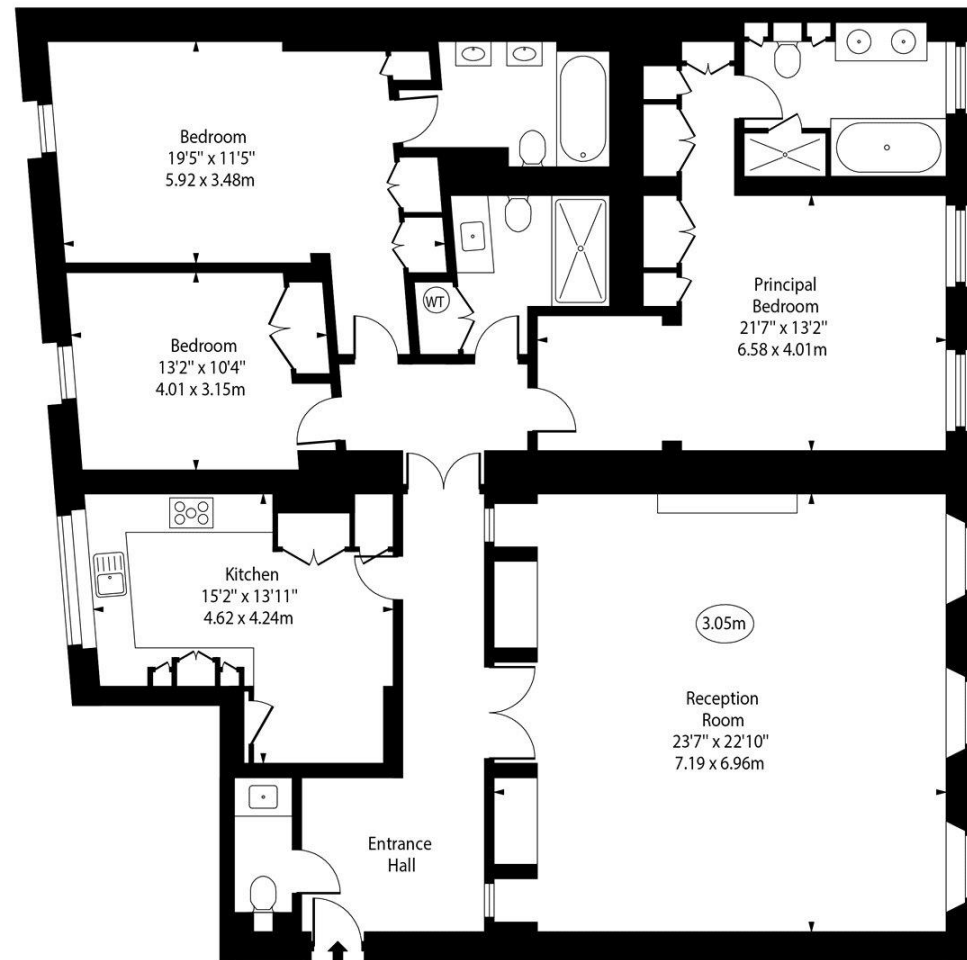
hydepark@chestertons.co.uk

020 7298 5900

chestertons.co.uk

# Hyde Park Square, W2

○ - Ceiling Height



Second Floor

Approx Gross Internal Area 2000 Sq Ft - 185.80 Sq M

For Illustration Purposes Only - Not To Scale

[www.goldlens.co.uk](http://www.goldlens.co.uk)

Ref. No. 018267K

Chesterton UK Services Limited trading as Chestertons for themselves and for the vendor of this property whose agents they are, give notice that (i) these particulars do not constitute any part of an offer or contract, (ii) all statements contained within these particulars are made without responsibility on the part of Chestertons or the vendor, (iii) whilst made in good faith, none of the statements contained within these particulars are to be relied upon as a statement or representation of fact, (iv) any intending purchasers must satisfy themselves by inspection or otherwise as to the correctness of each of the statements contained within these particulars, (v) the vendor does not make or give either Chestertons or any person in their employment any authority to make or give representation or warranty whatsoever in relation to this property. Wide angle lenses may be used. ©Copyright Chestertons | Chesterton UK Services Limited | Registered Office 40 Connaught Street, Hyde Park, London W2 2AB Registered Company Number 05334580.



This paper is  
100% recyclable