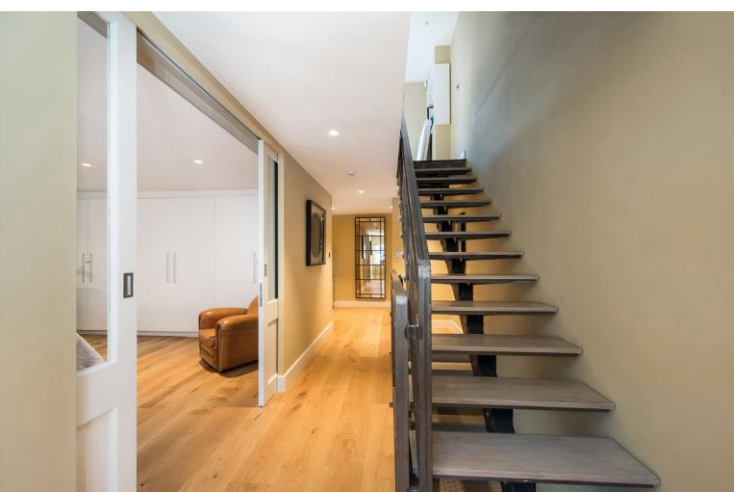




Southwick Mews
Paddington, W2

CHESTERTONS





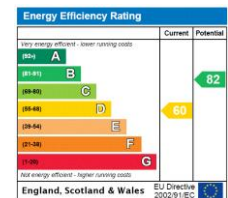
A wonderful air-conditioned 3-bedroom, 2-bathroom mews house close to Paddington Station and offered in superb condition.

The house is south facing and naturally well-lit throughout. Furthermore, it has wood floors throughout, patio doors that open up onto the mews, high end appliances in the kitchen, all bedrooms are spacious, the master bedroom is en-suite, wide hallways, a bespoke steel staircase, good storage and marble bathrooms.

Southwick Mews is a quaint cobbled mews located just south of Paddington Station and a short distance away from Hyde Park.

- 1566 sq ft
- 3 Beds, 2 Baths,
- Wood Floors
- Air-Conditioning
- High End Appliances
- Very Good Condition
- Spacious Bedrooms
- Quaint Cobbled Mews
- Close to Hyde Park
- Close to Paddington Station
- Tax Band G

£2,250,000 Asking Price



Tenure: Freehold

Chestertons Hyde Park & Marylebone Sales

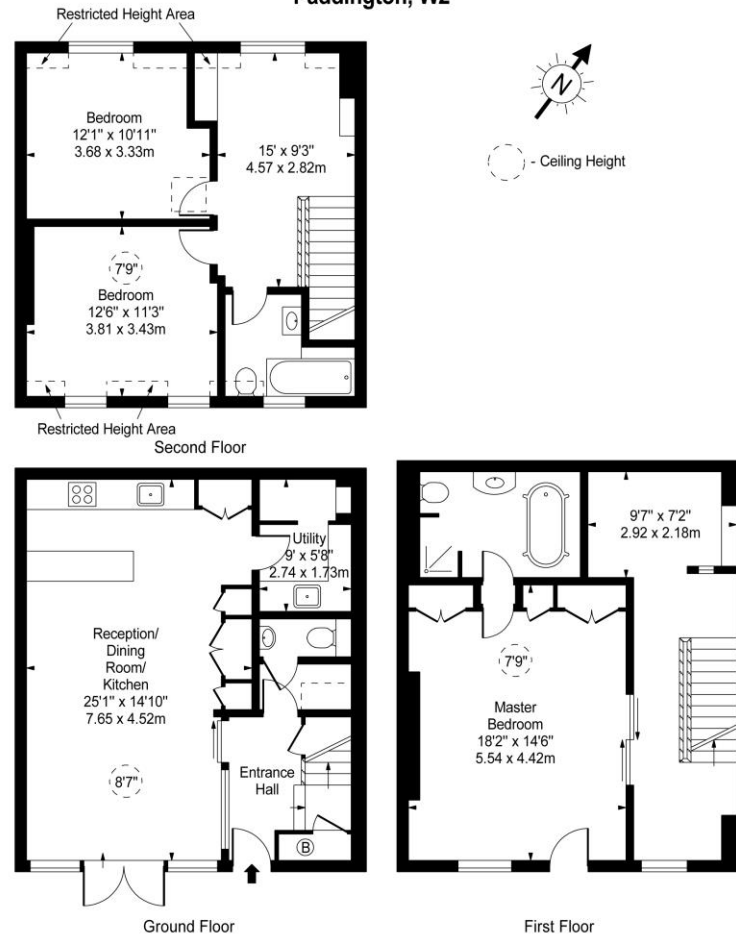
40 Connaught Street
London
W2 2AB

sales.hydepark@chestertons.com

020 7298 5900

chestertons.com

**Southwick Mews,
Paddington, W2**



Approx Gross Internal Area **1544 Sq Ft - 143.44 Sq M**
 Approx. Floor Area Including Restricted Heights **1566 Sq Ft - 145.48 Sq M**

For Illustration Purposes Only - Not To Scale
 www.goldlens.co.uk
 Ref. No. 015291E

Chesterton Global Ltd trading as Chestertons for themselves and for the vendor of this property whose agents they are, give notice that (i) these particulars do not constitute any part of an offer or contract, (ii) all statements contained within these particulars are made without responsibility on the part of Chestertons or the vendor, (iii) whilst made in good faith, none of the statements contained within these particulars are to be relied upon as a statement or representation of fact, (iv) any intending purchasers must satisfy themselves by inspection or otherwise as to the correctness of each of the statements contained within these particulars, (v) the vendor does not make or give either Chestertons or any person in their employment any authority to make or give representation or warranty whatsoever in relation to this property. Wide angle lenses may be used. ©Copyright Chestertons | Chesterton Global Ltd | Registered Office 40 Connaught Street, Hyde Park, London W2 2AB Registered Company Number 05334580.



This paper is
100% recyclable