



Inverness Terrace

London, W2

CHESTERTONS



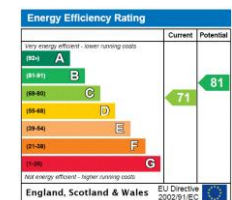


Discover an exquisite and spacious three-bedroom apartment with a private entrance, situated on the lower ground floor of a meticulously maintained Grade II listed building, just steps from the serene Hyde Park and the vibrant Queensway regeneration zone.

Inverness Terrace is ideally positioned, providing immediate access to the lush expanses of Hyde Park and the diverse shopping and dining options of Queensway. Excellent transport links are nearby, with Queensway (Central line) and Bayswater (Circle and District lines) underground stations just a short walk away. Additionally, Paddington station, offering mainline services including the Heathrow Express and connections to the Elizabeth, Circle, District, Bakerloo, and Hammersmith & City lines, is within easy reach.

- Share of freehold
- Private entrance
- Lateral
- Two patios
- Three spacious double-bedrooms
- Two bathrooms

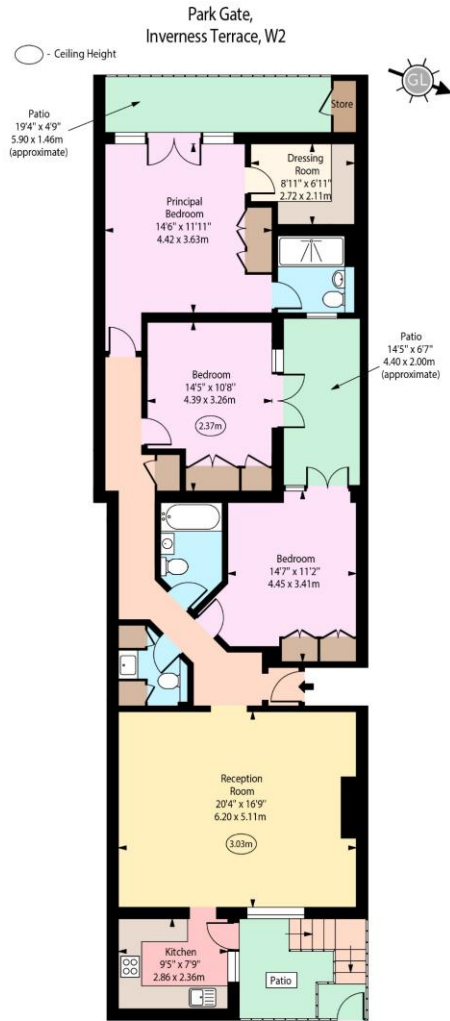
Asking Price £1,350,000



Tenure: Share of Freehold 980 years 7 months (Expires 3005)
Service Charge: £5000 p.a.
Ground Rent: £0
Local Authority: City of Westminster
Council Tax Band: E

Chestertons Hyde Park & Marylebone Sales

40 Connaught Street
 London
 W2 2AB
 hydepark@chestertons.co.uk
 020 7298 5900
 chestertons.co.uk



Lower Ground Floor
Approx Gross Internal Area 1310 Sq Ft - 121.70 Sq M

For Illustration Purposes Only - Not To Scale
www.goldiens.co.uk
Ref. No. 024675J

Chesterton Global Ltd trading as Chestertons for themselves and for the vendor of this property whose agents they are, give notice that (i) these particulars do not constitute any part of an offer or contract, (ii) all statements contained within these particulars are made without responsibility on the part of Chestertons or the vendor, (iii) whilst made in good faith, none of the statements contained within these particulars are to be relied upon as a statement or representation of fact, (iv) any intending purchasers must satisfy themselves by inspection or otherwise as to the correctness of each of the statements contained within these particulars, (v) the vendor does not make or give either Chestertons or any person in their employment any authority to make or give representation or warranty whatsoever in relation to this property. Wide angle lenses may be used. ©Copyright Chestertons | Chesterton Global Ltd | Registered Office 40 Connaught Street, Hyde Park, London W2 2AB Registered Company Number 05334580.

