



Hyde Park Square
Hyde Park, W2

CHESTERTONS

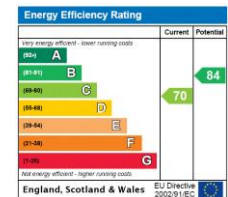




Situated in a prime location, this elegant 2,454 sq ft property offers versatile living with 5 to 6 bedrooms, depending on your space requirements. The residence features two spacious reception rooms, a convenient garage, and three well-appointed bathrooms, along with an additional guest WC. The property boasts a balcony and overlooks the communal gardens of Hyde Park Square, offering a serene retreat in the heart of the city. Residents enjoy exclusive access to private gardens, enhancing the tranquil atmosphere. Inside, the home is adorned with beautiful wooden floors, adding to its charm and sophistication. Ideally located, this house is a short walk from the verdant expanses of Hyde Park and enjoys excellent transport links, being close to both Paddington and Marble Arch stations, making it a perfect blend of luxury and convenience.

- 2454 Sqft
- Freehold House
- 5/6 Beds, 3 Baths
- Garage
- Balony
- Access to Communal Gardens
- Close to Paddington Station
- Close to Hyde Park

Asking Price £2,875,000



Tenure: Freehold
Service Charge: None
Ground Rent: None
Local Authority: Westminster
Council Tax Band: H

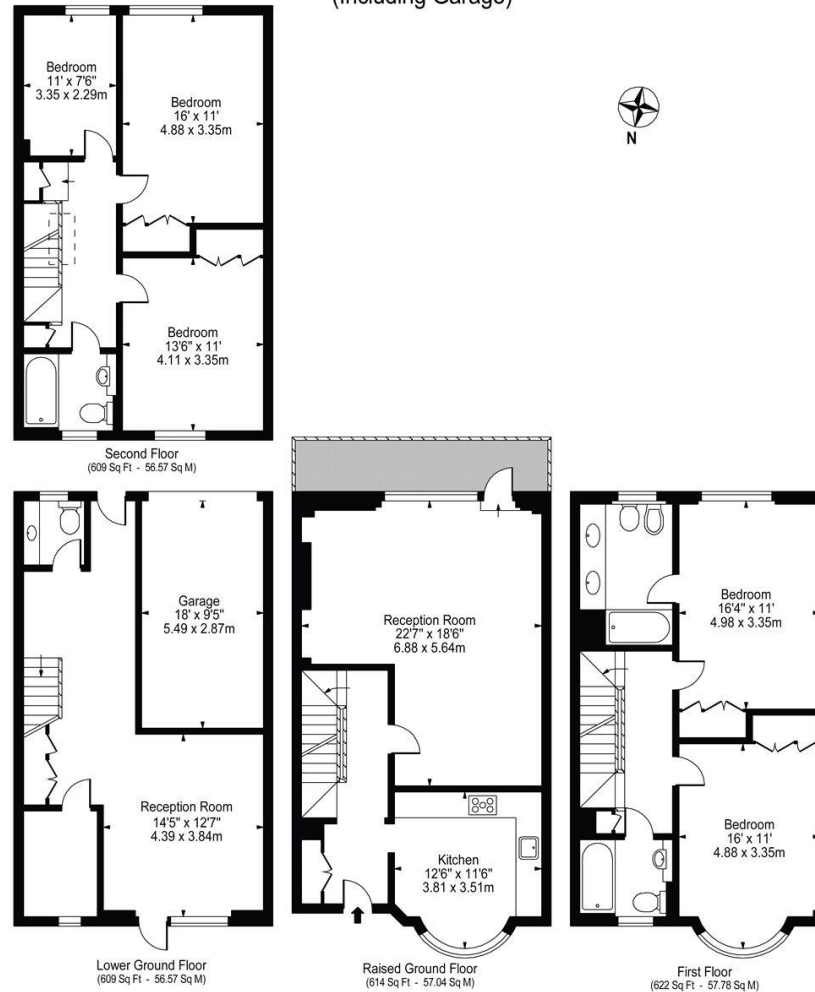
Chestertons Hyde Park & Marylebone Sales

40 Connaught Street
 London
 W2 2AB

Dylan.james@chestertons.co.uk
 020 7298 5900
 chestertons.co.uk

Hyde Park Square, W2

Approx. Gross Internal Area 2454 Sq Ft - 227.98 Sq M
(Including Garage)



For Illustration Purposes Only - Not To Scale

This floor plan should be used as a general outline for guidance only and does not constitute in whole or in part an offer or contract.
Any intending purchaser or lessee should satisfy themselves by inspection, searches, enquiries and full survey as to the correctness of each statement.
Any areas, measurements or distances quoted are approximate and should not be used to value a property or be the basis of any sale or let.

Chesterton Global Ltd trading as Chestertons for themselves and for the vendor of this property whose agents they are, give notice that (i) these particulars do not constitute any part of an offer or contract, (ii) all statements contained within these particulars are made without responsibility on the part of Chestertons or the vendor, (iii) whilst made in good faith, none of the statements contained within these particulars are to be relied upon as a statement or representation of fact, (iv) any intending purchasers must satisfy themselves by inspection or otherwise as to the correctness of each of the statements contained within these particulars, (v) the vendor does not make or give either Chestertons or any person in their employment any authority to make or give representation or warranty whatsoever in relation to this property. Wide angle lenses may be used. ©Copyright Chestertons | Chesterton Global Ltd | Registered Office 40 Connaught Street, Hyde Park, London W2 2AB Registered Company Number 05334580.



This paper is
100% recyclable