



# Gloucester Terrace

London, W2

Asking Price £475,000

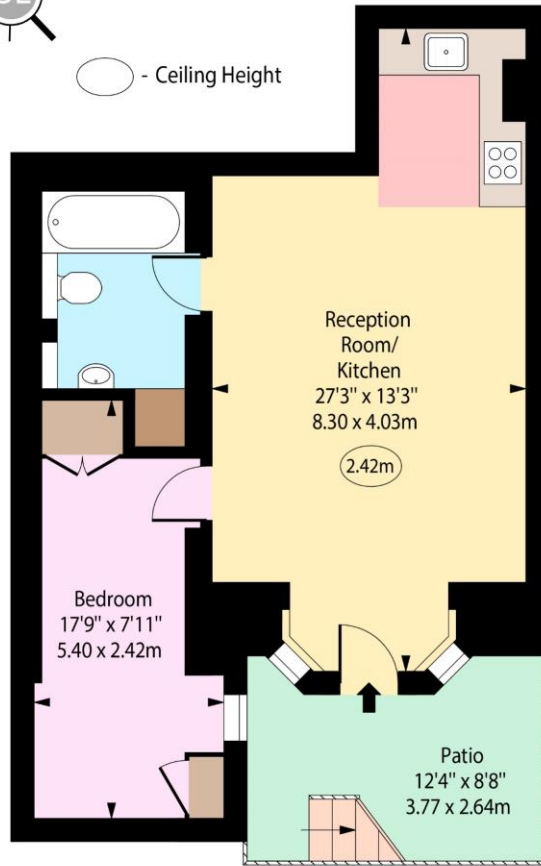
This impressive one-bedroom apartment, spanning 492 sqft, is ideally located on the sought-after Gloucester Terrace. Featuring a convenient private entrance, a spacious reception room and modern bathroom this well-presented home.

**CHESTERTONS**

# Gloucester Terrace, W2



○ - Ceiling Height



Lower Ground Floor

Approx Gross Internal Area 492 Sq Ft - 45.71 Sq M

For Illustration Purposes Only - Not To Scale  
[www.goldlens.co.uk](http://www.goldlens.co.uk)  
 Ref. No. 024543MS

**Tenure:** Share of Freehold with a 960 Year Lease (Expires 24/06/2985)

**Service Charge:** £600 p.a.

**Ground Rent:** £0

**Local Authority:** City of Westminster

**Council Tax Band:** C

Energy Efficiency Rating		Current	Potential
Very energy efficient - lower running costs			
(92+)	A		
(81-91)	B		
(69-80)	C	77	80
(55-68)	D		
(39-54)	E		
(21-38)	F		
(1-20)	G		
Not energy efficient - higher running costs			
England, Scotland & Wales		EU Directive 2002/91/EC	

## Chestertons Hyde Park & Marylebone Sales

40 Connaught Street  
 London  
 W2 2AB  
[hydepark@chestertons.co.uk](mailto:hydepark@chestertons.co.uk)  
 020 7298 5900  
[chestertons.co.uk](http://chestertons.co.uk)

Chesterton Global Ltd trading as Chestertons for themselves and for the vendor of this property whose agents they are, give notice that (i) these particulars do not constitute any part of an offer or contract, (ii) all statements contained within these particulars are made without responsibility on the part of Chestertons or the vendor, (iii) whilst made in good faith, none of the statements contained within these particulars are to be relied upon as a statement or representation of fact, (iv) any intending purchasers must satisfy themselves by inspection or otherwise as to the correctness of each of the statements contained within these particulars, (v) the vendor does not make or give either Chestertons or any person in their employment any authority to make or give representation or warranty whatsoever in relation to this property. Wide angle lenses may be used. ©Copyright Chestertons | Chesterton Global Ltd | Registered Office 40 Connaught Street, Hyde Park, London W2 2AB Registered Company Number 05334580.



This paper is 100% recyclable