



Leinster Gardens  
Bayswater, W2

CHESTERTONS



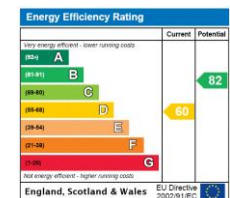




A chic, compact living space nestled within an elegant historical building adorned with pristine white stucco in the vibrant neighbourhood of Bayswater. This abode boasts a prime location in a coveted residential enclave, surrounded by an array of bustling shops, trendy bars, and delectable dining options lining Queensway. Convenient access to transportation is provided by the nearby Bayswater underground station, serviced by the Circle and District Lines, enhancing connectivity and accessibility for residents.

- Separate kitchen
- Dual aspect
- Raised ground floor
- Period conversion
- Conveniently located close by Queensway and Bayswater

Asking Price £310,000



**Tenure:** Leasehold. 101 years remaining.  
**Service Charge:** £2,993.01  
**Ground Rent:** £0  
**Local Authority:** Westminster  
**Council Tax Band:** C

*Chestertons Hyde Park & Marylebone Sales*

40 Connaught Street  
London  
W2 2AB

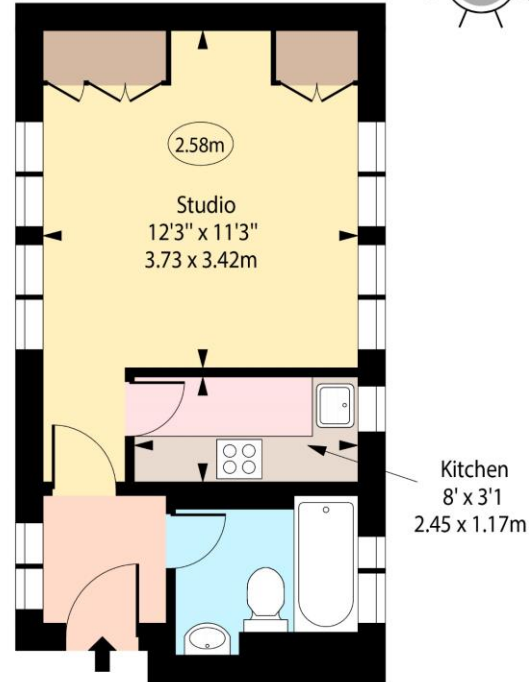
[hydepark@chestertons.co.uk](mailto:hydepark@chestertons.co.uk)

020 7298 5900

[chestertons.co.uk](http://chestertons.co.uk)

# Leinster Gardens, W2

○ - Ceiling Height



First Floor

Approx Gross Internal Area 248 Sq Ft - 23.04 Sq M

For Illustration Purposes Only - Not To Scale

[www.goldlens.co.uk](http://www.goldlens.co.uk)

Ref. No. 024232MS

Chesterton Global Ltd trading as Chestertons for themselves and for the vendor of this property whose agents they are, give notice that (i) these particulars do not constitute any part of an offer or contract, (ii) all statements contained within these particulars are made without responsibility on the part of Chestertons or the vendor, (iii) whilst made in good faith, none of the statements contained within these particulars are to be relied upon as a statement or representation of fact, (iv) any intending purchasers must satisfy themselves by inspection or otherwise as to the correctness of each of the statements contained within these particulars, (v) the vendor does not make or give either Chestertons or any person in their employment any authority to make or give representation or warranty whatsoever in relation to this property. Wide angle lenses may be used. ©Copyright Chestertons | Chesterton Global Ltd | Registered Office 40 Connaught Street, Hyde Park, London W2 2AB Registered Company Number 05334580.



This paper is  
100% recyclable