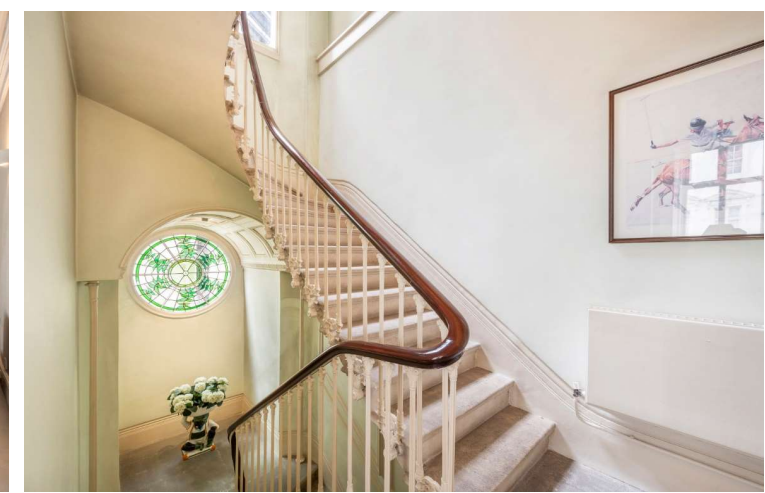
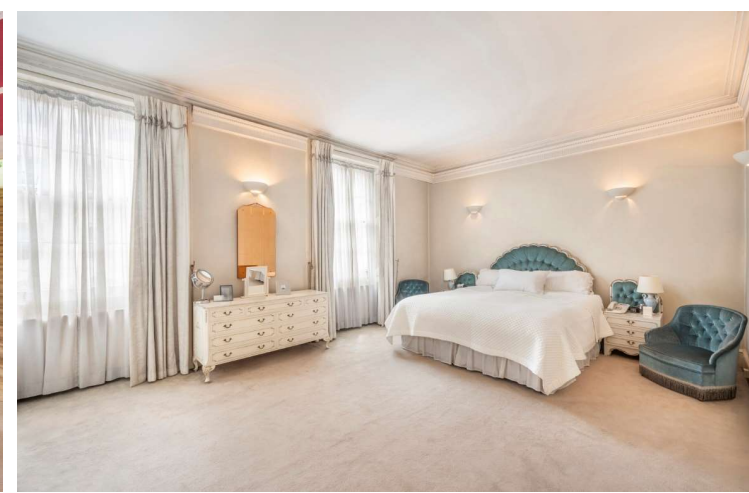
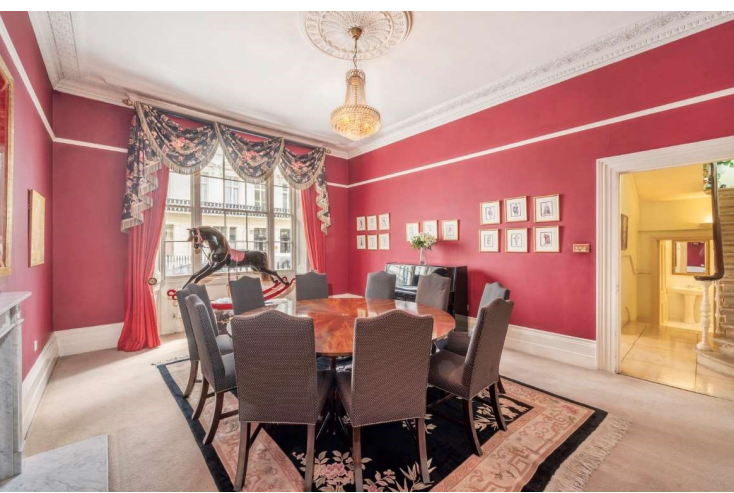




Strathearn Place
Hyde Park, W2

CHESTERTONS





Nestled in the heart of the Hyde Park Estate, this handsome double-fronted stucco house on Strathearn Place, London, W2, offers an elegant and spacious living environment. Boasting impressive 12-foot ceiling heights on both the ground and first floors, the property features 5 to 6 bedrooms, depending on your use of the space, with two ensuite bedrooms, including the principal suite. Complemented by three additional bathrooms, the house also offers three to four reception rooms, two of which are interconnected and span the entire first floor. A large kitchen and dining room provide ample space for family gatherings, while a sauna and roof terrace offer luxurious relaxation options. The lower ground level includes an outdoor patio space and five vaults totalling 400 sqft, ideal for storage or integration into the living area, making the house 3750 sqft excluding the vaults and 4150 sqft including them. Additionally, an underground parking space in a nearby building enhances convenience. Strathearn Place's prime location offers easy access to local pubs, restaurants, cafes, shops, Hyde Park, Paddington Station, and Lancaster Gate Station, making it a perfect blend of luxury and practicality.

- 4150 Sqft
- Freehold
- 5-6 Bedrooms
- 3-4 Receptions
- 5 Vaults (400 sqft)
- 12ft Ceilings
- Underground Parking Space
- Terrace, Balcony & Patio
- Kitchen-Diner
- Close to Hyde Park
- Close to Paddington

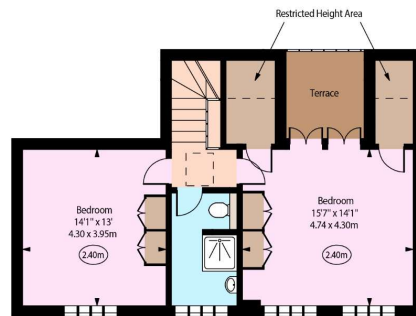
Offers In Excess Of £5,000,000

Tenure: Freehold
Service Charge: None
Ground Rent: None
Local Authority: City of Westminster
Council Tax Band: H

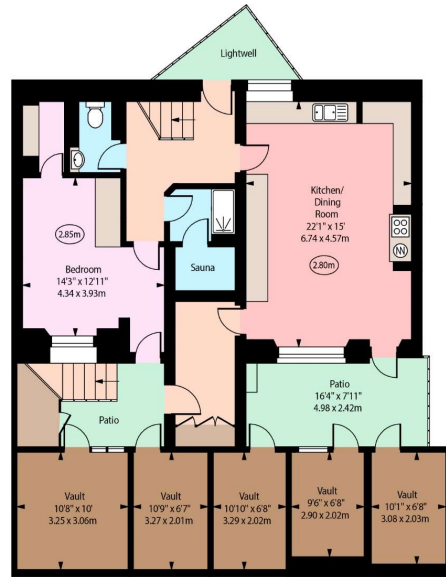
Chestertons Hyde Park & Marylebone Sales

40 Connaught Street
London
W2 2AB
hydepark@chestertons.co.uk
020 7298 5900
chestertons.co.uk

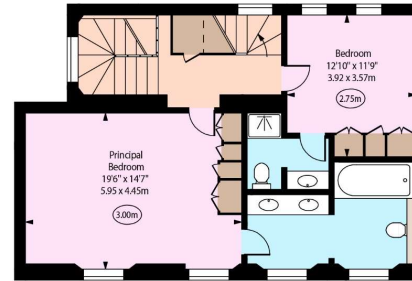
Strathearn Place, W2



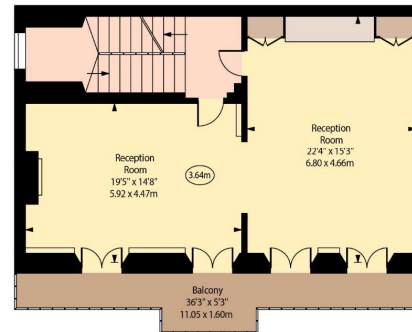
Third Floor



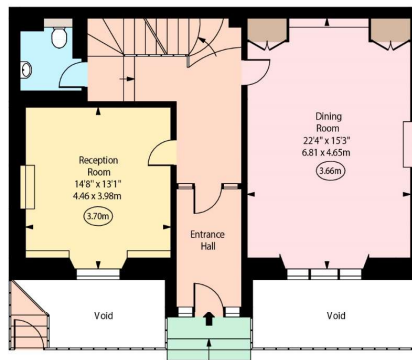
Lower Ground Floor



Second Floor



First Floor



Ground Floor

Approx Gross Internal Area 3720 Sq Ft - 345.59 Sq M
 Approx. Floor Area Including Restricted Heights (Excluding Vaults) 3750 Sq Ft - 348.38 Sq M
 Approx Vaults Area 400 Sq Ft - 37.16 Sq M

For Illustration Purposes Only - Not To Scale
 www.goldlens.co.uk
 Ref. No. 0240388

Chesterton Global Ltd trading as Chestertons for themselves and for the vendor of this property whose agents they are, give notice that (i) these particulars do not constitute any part of an offer or contract, (ii) all statements contained within these particulars are made without responsibility on the part of Chestertons or the vendor, (iii) whilst made in good faith, none of the statements contained within these particulars are to be relied upon as a statement or representation of fact, (iv) any intending purchasers must satisfy themselves by inspection or otherwise as to the correctness of each of the statements contained within these particulars, (v) the vendor does not make or give either Chestertons or any person in their employment any authority to make or give representation or warranty whatsoever in relation to this property. Wide angle lenses may be used. ©Copyright Chestertons | Chesterton Global Ltd | Registered Office 40 Connaught Street, Hyde Park, London W2 2AB Registered Company Number 05334580.



This paper is 100% recyclable