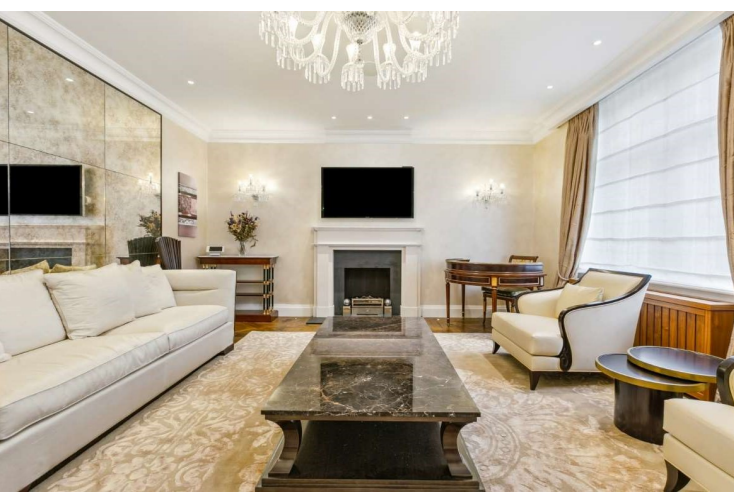




Hyde Park Street  
Hyde Park, W2

CHESTERTONS









This impressive duplex occupies the second and third floors of a prestigious period building. It features three reception rooms, a spacious eat-in kitchen, and five bedrooms with five bathrooms. The reception rooms are bright and airy, offering versatile spaces for both casual gatherings and formal entertaining. The kitchen is equipped with modern appliances and ample storage, making it a practical yet stylish hub for culinary activities. Upstairs, the bedrooms provide comfortable accommodations, with the master suite boasting an en-suite bathroom and generous closet space. Additional bathrooms ensure convenience for residents and guests alike. Located in the vibrant neighbourhood of Hyde Park Street, this residence offers easy access to a wealth of amenities and attractions, including Hyde Park and popular shopping districts.

Hyde Park Street, W2, presents a well-appointed living space in a prime location, perfect for those seeking a blend of comfort and convenience in the heart of London.

- 5 Beds - 4 Baths
- Prestigious Building
- Opposite Hyde Park
- Multiple Receptions
- Dine-in Style Kitchen
- High End Finishes and Appliances
- Balcony
- Duplex
- Close to Transport
- Close to Connaught Village

Asking Price £9,000,000

Energy Efficiency Rating		Current	Potential
Very energy efficient - lower running costs			
(92-100) A			
(81-91) B			
(69-80) C		74	84
(55-68) D			
(39-54) E			
(21-38) F			
(1-20) G			
Not energy efficient - higher running costs			
England, Scotland & Wales		EU Directive 2002/91/EC	

**Tenure:** Share of Freehold 151 years 8 months  
**Service Charge:** £42,305 pa (including Reserve Fund)  
**Ground Rent:** None  
**Local Authority:** City of Westminster  
**Council Tax Band:** H

*Chestertons Hyde Park & Marylebone Sales*

40 Connaught Street  
 London  
 W2 2AB

hydepark@chestertons.co.uk

020 7298 5900

chestertons.co.uk

## Hyde Park Street, W2

Approximate gross internal area

302.85 sq m / 3260 sq ft



Key :  
CH - Ceiling Height



Second Floor



Third Floor

Not to scale, for guidance only and must not be relied upon as a statement of fact.  
All measurements and areas are approximate only

Chesterton Global Ltd trading as Chestertons for themselves and for the vendor of this property whose agents they are, give notice that (i) these particulars do not constitute any part of an offer or contract, (ii) all statements contained within these particulars are made without responsibility on the part of Chestertons or the vendor, (iii) whilst made in good faith, none of the statements contained within these particulars are to be relied upon as a statement or representation of fact, (iv) any intending purchasers must satisfy themselves by inspection or otherwise as to the correctness of each of the statements contained within these particulars, (v) the vendor does not make or give either Chestertons or any person in their employment any authority to make or give representation or warranty whatsoever in relation to this property. Wide angle lenses may be used. ©Copyright Chestertons | Chesterton Global Ltd | Registered Office 40 Connaught Street, Hyde Park, London W2 2AB Registered Company Number 05334580.



This paper is  
100% recyclable