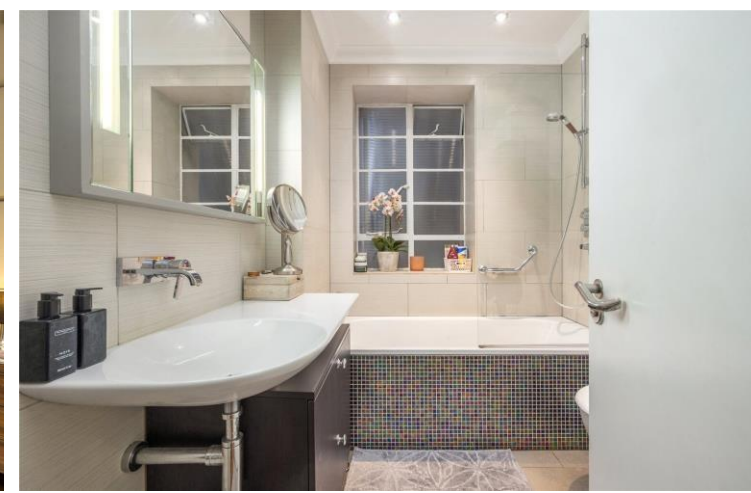




Stanhope Terrace
London, W2

CHESTERTONS

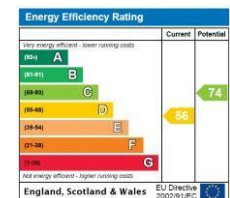




Presenting immaculate interiors, a shared garden retreat, and exclusive parking privileges, this exquisite 1-bedroom residence commands a coveted position mere steps from the iconic Hyde Park in the vibrant heart of the West End. Nestled on Stanhope Terrace, a distinguished residential avenue, it enjoys proximity to the lush expanses of the parkland and an array of upscale boutiques, charming cafes, and gourmet dining options.

- Own Private Entrance
- Grand Period Conversion
- One Large Double Bedroom
- Direct Access to Hyde Park Gardens
- High Ceilings
- Stunning Cornicing

Asking Price £795,000



Tenure: Leasehold 976 years 3 months
Service Charge: £5787
Ground Rent: £0
Local Authority: City of Westminster
Council Tax Band: E

Chestertons Hyde Park & Marylebone Sales

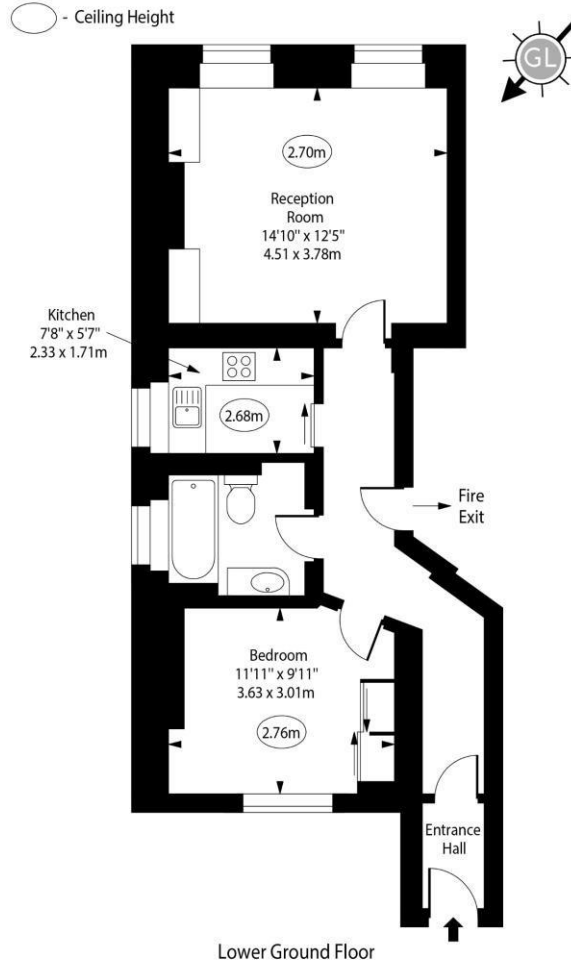
40 Connaught Street
 London
 W2 2AB

hydepark@chestertons.co.uk

020 7298 5900

chestertons.co.uk

Stanhope Terrace, W2



Approx Gross Internal Area 556 Sq Ft - 51.65 Sq M

For Illustration Purposes Only - Not To Scale
www.goldlens.co.uk
Ref. No. 021437R

Chesterton Global Ltd trading as Chestertons for themselves and for the vendor of this property whose agents they are, give notice that (i) these particulars do not constitute any part of an offer or contract, (ii) all statements contained within these particulars are made without responsibility on the part of Chestertons or the vendor, (iii) whilst made in good faith, none of the statements contained within these particulars are to be relied upon as a statement or representation of fact, (iv) any intending purchasers must satisfy themselves by inspection or otherwise as to the correctness of each of the statements contained within these particulars, (v) the vendor does not make or give either Chestertons or any person in their employment any authority to make or give representation or warranty whatsoever in relation to this property. Wide angle lenses may be used. ©Copyright Chestertons | Chesterton Global Ltd | Registered Office 40 Connaught Street, Hyde Park, London W2 2AB Registered Company Number 05334580.



This paper is 100% recyclable