



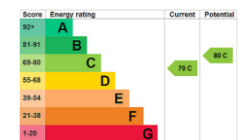
Sager House
Seymour Street, Marylebone, W1H





Welcome to this charming 1st-floor flat located on Seymour Street in the heart of Marylebone. Boasting a spacious 1023 sqft layout, this delightful property features two bedrooms, two bathrooms, utility room, a reception area, and a separate dining area, offering ample space for comfortable living and entertaining. With lift access and the convenience of a day porter, residents can enjoy ease of access and added security. Situated in an attractive building, this home is perfectly positioned within close proximity to local amenities, transport links, shops, and the lush greenery of Hyde Park, promising a lifestyle of both convenience and leisure in one of London's most sought-after neighbourhoods.

- Lift and Porter
- 1023 sqft
- 2 Bed, 2 Bath
- Utility Room
- Wood Floors
- Good Condition
- Close to Transport
- Close to Hyde Park



Asking Price £1,395,000

Tenure: Leasehold 89 years (19/09/2113)
Service Charge: £5,586.12 per annum
Ground Rent: £200
Local Authority: City Of Westminster
Council Tax Band: H

Chestertons Hyde Park & Marylebone Sales

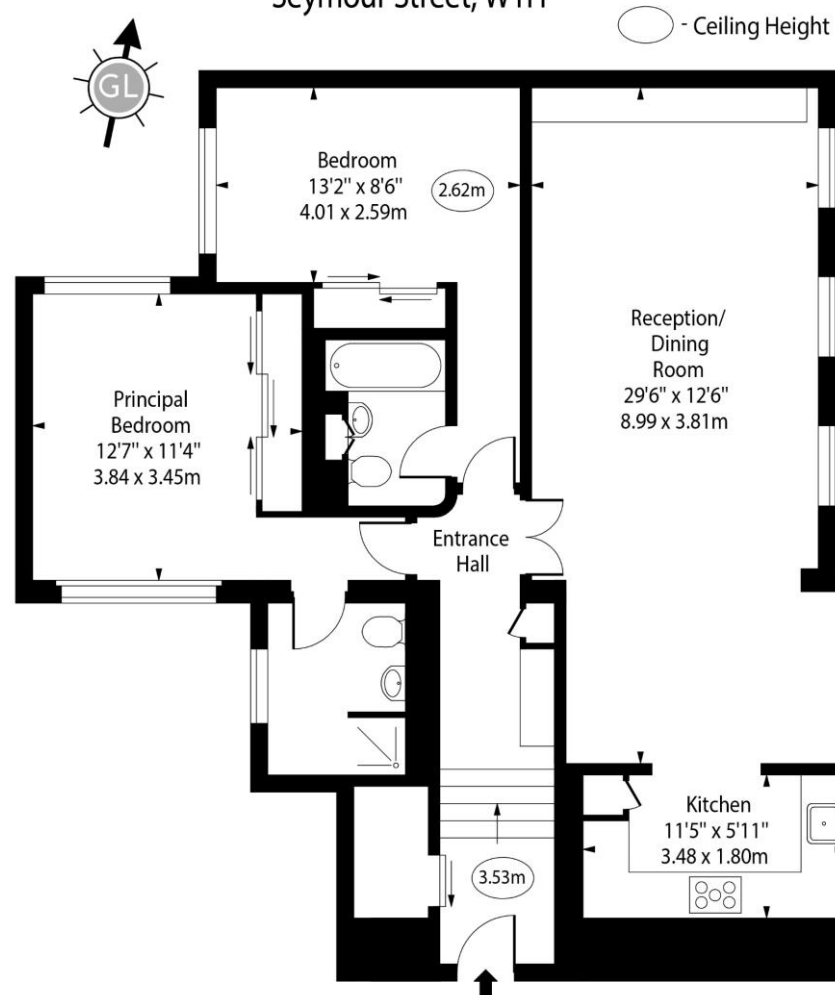
40 Connaught Street
 London
 W2 2AB

hydepark@chestertons.co.uk

020 7298 5900

chestertons.co.uk

Sager House,
Seymour Street, W1H



First Floor

Approx Gross Internal Area 1023 Sq Ft - 95.04 Sq M

For Illustration Purposes Only - Not To Scale

www.goldlens.co.uk

Ref. No. 023090E

Chesterton Global Ltd trading as Chestertons for themselves and for the vendor of this property whose agents they are, give notice that (i) these particulars do not constitute any part of an offer or contract, (ii) all statements contained within these particulars are made without responsibility on the part of Chestertons or the vendor, (iii) whilst made in good faith, none of the statements contained within these particulars are to be relied upon as a statement or representation of fact, (iv) any intending purchasers must satisfy themselves by inspection or otherwise as to the correctness of each of the statements contained within these particulars, (v) the vendor does not make or give either Chestertons or any person in their employment any authority to make or give representation or warranty whatsoever in relation to this property. Wide angle lenses may be used. ©Copyright Chestertons | Chesterton Global Ltd | Registered Office 40 Connaught Street, Hyde Park, London W2 2AB Registered Company Number 05334580.



This paper is
100% recyclable