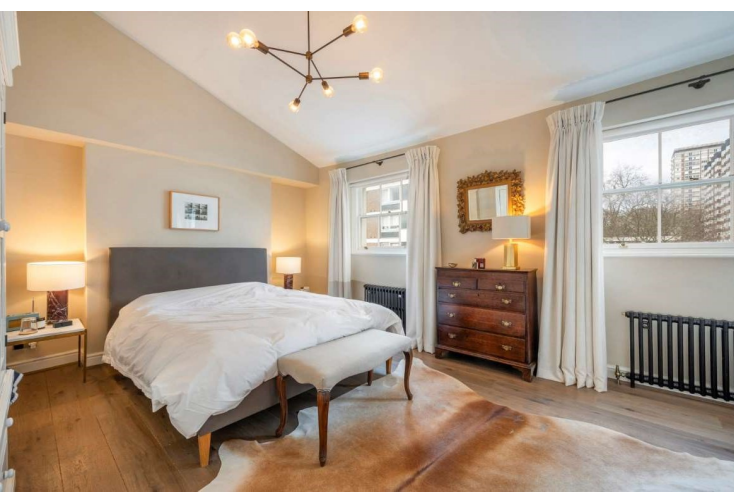




Kendal Street
Hyde Park, W2

CHESTERTONS





Nestled within the heart of Kendal Street W2, this stunning Georgian terraced house epitomizes elegance and sophistication. Boasting two spacious bedrooms, each with its own ensuite bathroom, along with a convenient guest WC, this property offers unparalleled comfort and convenience. The layout features two reception rooms, one on the ground floor and another on the first floor, providing ample space for relaxation and entertainment. A dine-in style kitchen and separate utility room cater to practical needs with finesse. With vault storage and 3.1m ceilings adding a touch of grandeur, this residence has been recently refurbished to the highest standards by its current owners. Situated mere moments away from Paddington Station and Hyde Park, this property is ideally located for those seeking easy access to transport links and the natural beauty of London's green spaces. Positioned in the heart of Connaught Village, it serves as an ideal London family pied-à-terre, offering proximity to the vibrant West End while ensuring a tranquil retreat in one of the city's most coveted locales.

- 1397 sqft
- Freehold House
- 2 Bed - 2 Bath
- 2 Reception Rooms
- Refurbished
- Dine-in Kitchen
- Georgian
- Close to Hyde Park
- Close to Paddington Station

Asking Price £2,500,000

Energy Efficiency Rating		Current	Potential
Very energy efficient - lower running costs	A		
Energy efficient - lower running costs	B		
Decent energy efficiency - lower running costs	C		
Below average energy efficiency - higher running costs	D		
Energy inefficient - higher running costs	E		
Very energy inefficient - higher running costs	F		
Extremely energy inefficient - highest running costs	G		
EU Directive 2002/91/EC		52	84
England, Scotland & Wales			

Tenure: Freehold
Service Charge: None
Ground Rent: None
Local Authority: City of Westminster
Council Tax Band: G

Chestertons Hyde Park & Marylebone Sales

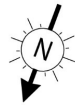
40 Connaught Street
 London
 W2 2AB

hydepark@chestertons.co.uk

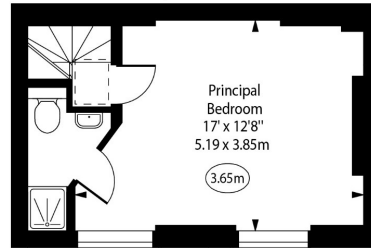
020 7298 5900

chestertons.co.uk

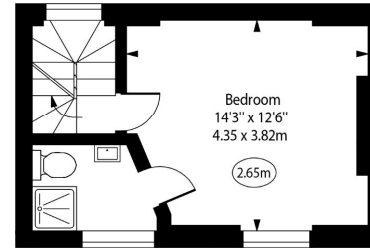
Kendal Street, W2



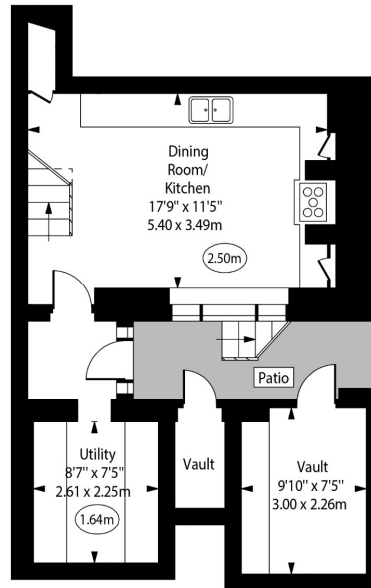
○ - Ceiling Height



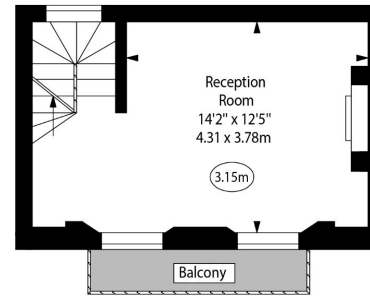
Third Floor



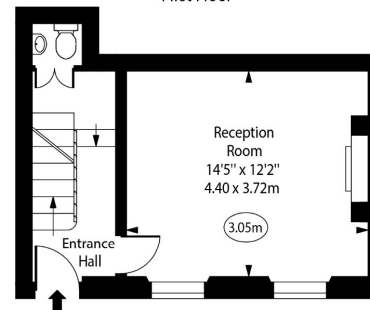
Second Floor



Lower Ground Floor



First Floor



Ground Floor

Approx Gross Internal Area

1321 Sq Ft - 122.72 Sq M

(Excluding Vaults)

Vaults Area

76 Sq Ft - 7.06 Sq M

For Illustration Purposes Only - Not To Scale

Chesterton Global Ltd trading as Chestertons for themselves and for the vendor of this property whose agents they are, give notice that (i) these particulars do not constitute any part of an offer or contract, (ii) all statements contained within these particulars are made without responsibility on the part of Chestertons or the vendor, (iii) whilst made in good faith, none of the statements contained within these particulars are to be relied upon as a statement or representation of fact, (iv) any intending purchasers must satisfy themselves by inspection or otherwise as to the correctness of each of the statements contained within these particulars, (v) the vendor does not make or give either Chestertons or any person in their employment any authority to make or give representation or warranty whatsoever in relation to this property. Wide angle lenses may be used. ©Copyright Chestertons | Chesterton Global Ltd | Registered Office 40 Connaught Street, Hyde Park, London W2 2AB Registered Company Number 05334580.



This paper is
100% recyclable