

Southwick Mews

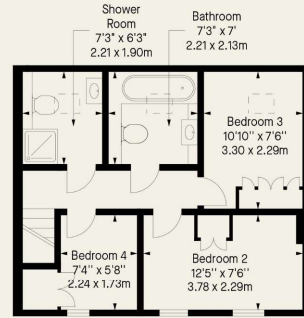
Paddington, W2

Asking Price £1,925,000
Freehold

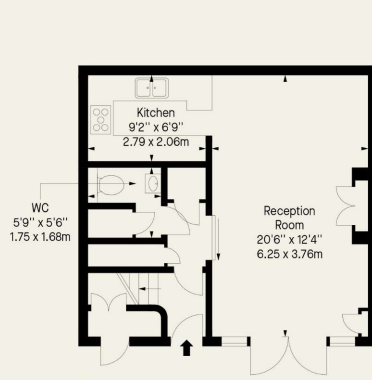
Introducing an exceptional opportunity to own a stunning 1299 sqft mews house nestled in the prestigious Southwick Mews, London W2. This exquisite property boasts 4 bedrooms, 3 bathrooms, and a convenient guest WC, offering a perfect blend of space.

CHESTERTONS

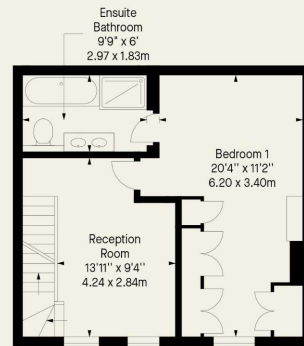
Southwick Mews
 London, W2
 Approx. Gross Internal Area *
 1299 Ft² - 120.68 M²



Second Floor

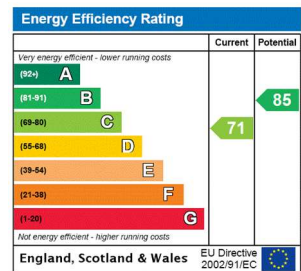


Ground Floor



First Floor

Tenure: Freehold
Local Authority: City Of Westminster Council
Council Tax Band: G



Chestertons Hyde Park & Marylebone Sales

40 Connaught Street
 London
 W2 2AB
 hydepark@chestertons.co.uk
 020 7298 5900
 chestertons.co.uk

Chesterton Global Ltd trading as Chestertons for themselves and for the vendor of this property whose agents they are, give notice that (i) these particulars do not constitute any part of an offer or contract, (ii) all statements contained within these particulars are made without responsibility on the part of Chestertons or the vendor, (iii) whilst made in good faith, none of the statements contained within these particulars are to be relied upon as a statement or representation of fact, (iv) any intending purchasers must satisfy themselves by inspection or otherwise as to the correctness of each of the statements contained within these particulars, (v) the vendor does not make or give either Chestertons or any person in their employment any authority to make or give representation or warranty whatsoever in relation to this property. Wide angle lenses may be used. ©Copyright Chestertons | Chesterton Global Ltd | Registered Office 40 Connaught Street, Hyde Park, London W2 2AB Registered Company Number 05334580.



This paper is 100% recyclable