



Lancaster Mews  
Bayswater, W2

CHESTERTONS





Nestled within the charming and historic cobbled lanes of Lancaster Mews, this extraordinary property offers a unique and versatile living experience. This enchanting Mews House spans an impressive 2806 sqft, showcasing a distinctive low build style that seamlessly blends classic elegance with modern functionality.

**Features:**

**Layout:** Currently configured as two separate residences, this property boasts a total of 4 bedrooms. The ground floor hosts a fully self-contained studio, while the upper floors feature a spacious 3-bedroom flat. The flexibility of the layout allows for easy conversion back into a single, cohesive dwelling.

**Natural Light:** Bathed in natural light, the property enjoys the luxury of windows at both the front and rear, ensuring a bright and airy atmosphere throughout. The south-facing orientation enhances the luminosity, creating a warm and inviting ambiance.

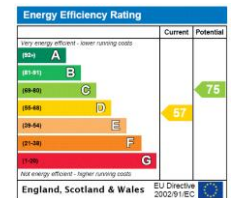
**Outdoor Spaces:** Delight in the beauty of the outdoors from the comfort of your own home with front and rear balconies. These private outdoor spaces provide the perfect setting for al fresco dining, relaxation, and enjoying the tranquil surroundings of Lancaster Mews.

**Location:** Situated in the heart of London, Lancaster Mews offers proximity to renowned landmarks such as Hyde Park, Paddington Station, and the vibrant West End. Experience the convenience of urban living while residing in a picturesque and peaceful mews setting.

**Versatility:** The property's unique design allows for versatility in usage. Consider transforming the ground floor studio back into a spacious garage, providing ample parking space for your convenience.

- 2806 Sqft
- Low-Built Style
- 4 Beds - 4 Baths
- Self Contained Studio
- 2 Balconies
- South Facing
- Good Natural Light
- Air-Conditioning
- Cobbled Mews
- Close To Hyde Park
- Close to Paddington

Asking Price £3,750,000

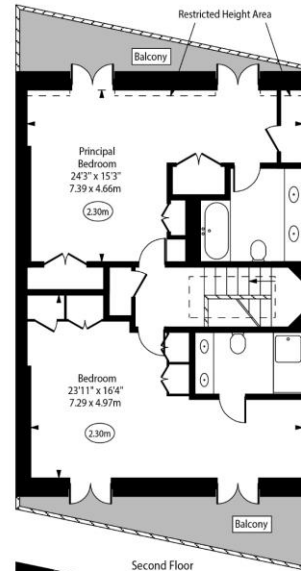
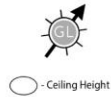


**Tenure:** Freehold  
**Local Authority:** Westminster  
**Council Tax Band:** H

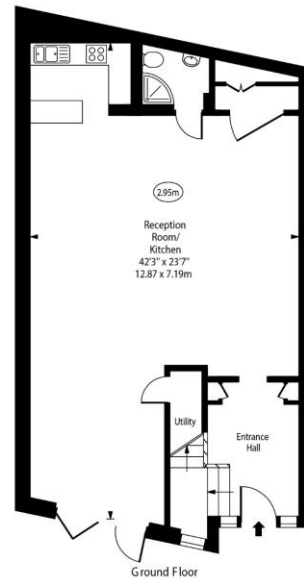
*Chestertons Hyde Park & Marylebone Sales*

40 Connaught Street  
 London  
 W2 2AB  
 hydepark@chestertons.co.uk  
 020 7298 5900  
 chestertons.co.uk

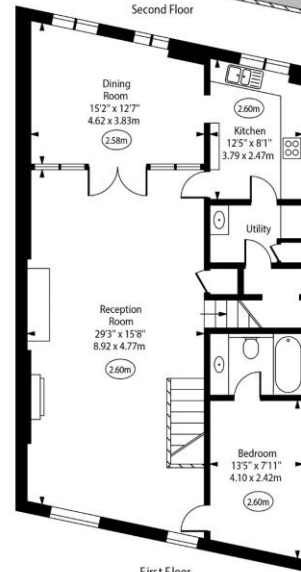
Lancaster Mews, W2



Second Floor



Ground Floor



First Floor

Approx Gross Internal Area 2806 Sq Ft - 260.68 Sq M  
 Approx. Floor Area Including Restricted Heights 2814 Sq Ft - 261.42 Sq M

For Illustration Purposes Only - Not To Scale  
[www.goldens.co.uk](http://www.goldens.co.uk)  
 Ref. No. 022310R

Chesteron Global Ltd trading as Chestertons for themselves and for the vendor of this property whose agents they are, give notice that (i) these particulars do not constitute any part of an offer or contract, (ii) all statements contained within these particulars are made without responsibility on the part of Chestertons or the vendor, (iii) whilst made in good faith, none of the statements contained within these particulars are to be relied upon as a statement or representation of fact, (iv) any intending purchasers must satisfy themselves by inspection or otherwise as to the correctness of each of the statements contained within these particulars, (v) the vendor does not make or give either Chestertons or any person in their employment any authority to make or give representation or warranty whatsoever in relation to this property. Wide angle lenses may be used. ©Copyright Chestertons | Chesteron Global Ltd | Registered Office 40 Connaught Street, Hyde Park, London W2 2AB Registered Company Number 05334580.



This paper is 100% recyclable