



Hyde Park Square

Hyde Park, W2

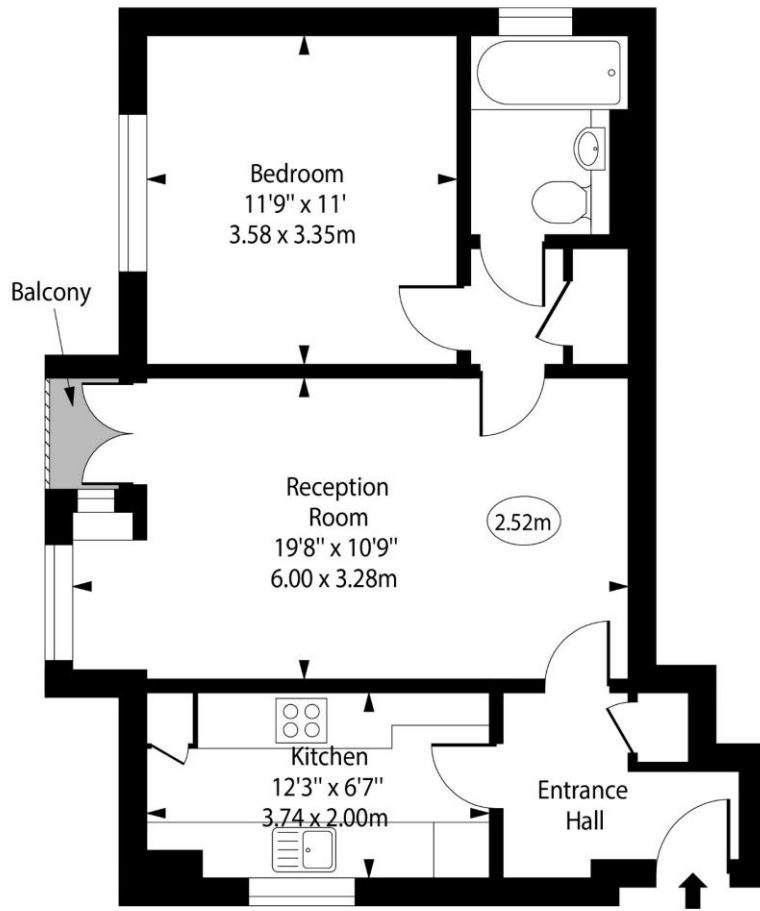
Asking Price £449,000

Introducing an exquisite gem in prestigious Hyde Park Square. 2nd floor, porter, lift, private balcony, access to residents' gardens. 1 bed, 1 bath, reception, kitchen. 540 sqft of living space with abundant natural light.

CHESTERTONS

Hyde Park Square, Hyde Park, W2

○ - Ceiling Height



Second Floor

Approx Gross Internal Area 540 Sq Ft - 50.17 Sq M

For Illustration Purposes Only - Not To Scale

www.goldlens.co.uk

Ref. No. 020696A

Tenure: Leasehold 35 years 7 months (24/12/2058)

Service Charge: Please Enquire

Ground Rent: £140

Local Authority: Westminster City

Council Tax Band: F

Energy Efficiency Rating		Current	Potential
Very energy efficient - lower running costs			
(92+)	A		
(81-91)	B		
(69-80)	C	72	78
(55-68)	D		
(39-54)	E		
(21-38)	F		
(1-20)	G		
Not energy efficient - higher running costs			
England, Scotland & Wales		EU Directive 2002/91/EC	

Chestertons Hyde Park & Marylebone Sales

40 Connaught Street

London

W2 2AB

sales.hydepark@chestertons.co.uk

020 7298 5900

chestertons.co.uk

Chesterton Global Ltd trading as Chestertons for themselves and for the vendor of this property whose agents they are, give notice that (i) these particulars do not constitute any part of an offer or contract, (ii) all statements contained within these particulars are made without responsibility on the part of Chestertons or the vendor, (iii) whilst made in good faith, none of the statements contained within these particulars are to be relied upon as a statement or representation of fact, (iv) any intending purchasers must satisfy themselves by inspection or otherwise as to the correctness of each of the statements contained within these particulars, (v) the vendor does not make or give either Chestertons or any person in their employment any authority to make or give representation or warranty whatsoever in relation to this property. Wide angle lenses may be used. ©Copyright Chestertons | Chesterton Global Ltd | Registered Office 40 Connaught Street, Hyde Park, London W2 2AB Registered Company Number 05334580.



This paper is
100% recyclable