



Belle Vue Apartments

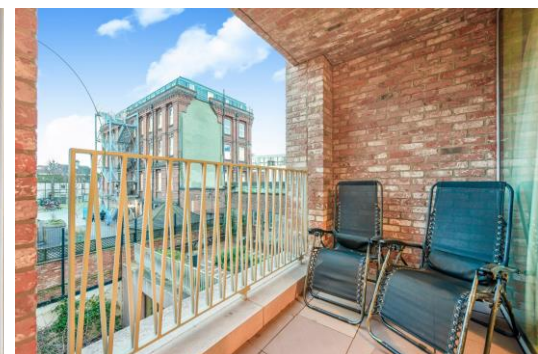
Rowland Hill Street, Hampstead NW3

Asking Price £600,000

For people of over sixty years old only. A superb one bedroom apartment situated in this luxury purpose built development with a communal indoor swimming pool. The property benefits from a private south facing terrace with amazing far reaching views of London.

The property is exceptionally well located just 0.2 miles from Belsize Park High Street and Belsize Park Underground (Northern Line), 0.2 miles to all the restaurants and shops of South End Green, including Marks & Spencer and 0.3 miles to the open acres of Hampstead Heath.

CHESTERTONS



Belle Vue Apartments

Rowland Hill Street, Hampstead NW3

- For people of over sixty years old only
- Luxury one bedroom apartment
- First floor with lift
- South facing terrace
- Communal indoor swimming pool
- Communal roof terrace
- Amazing far reaching views
- 0.2 miles to Belsize Park High Street
- 0.3 miles to the Northern Line
- 0.3 miles to the open acres of Hampstead Heath
- Offered chain free



Tenure: Leasehold 991 years remaining.

Service Charge: £9,413 per annum.

Ground Rent: £0

Local Authority: Camden

Council Tax Band: E

| Score | Energy rating | Current | Potential |
|-------|---------------|---------|-----------|
| 92+ | A | | |
| 81-91 | B | 84 B | 84 B |
| 69-80 | C | | |
| 55-68 | D | | |
| 39-54 | E | | |
| 21-38 | F | | |
| 1-20 | G | | |

Chestertons Hampstead Sales

55-56 Hampstead High Street

Hampstead

NW3 1QH

hampstead@chestertons.co.uk

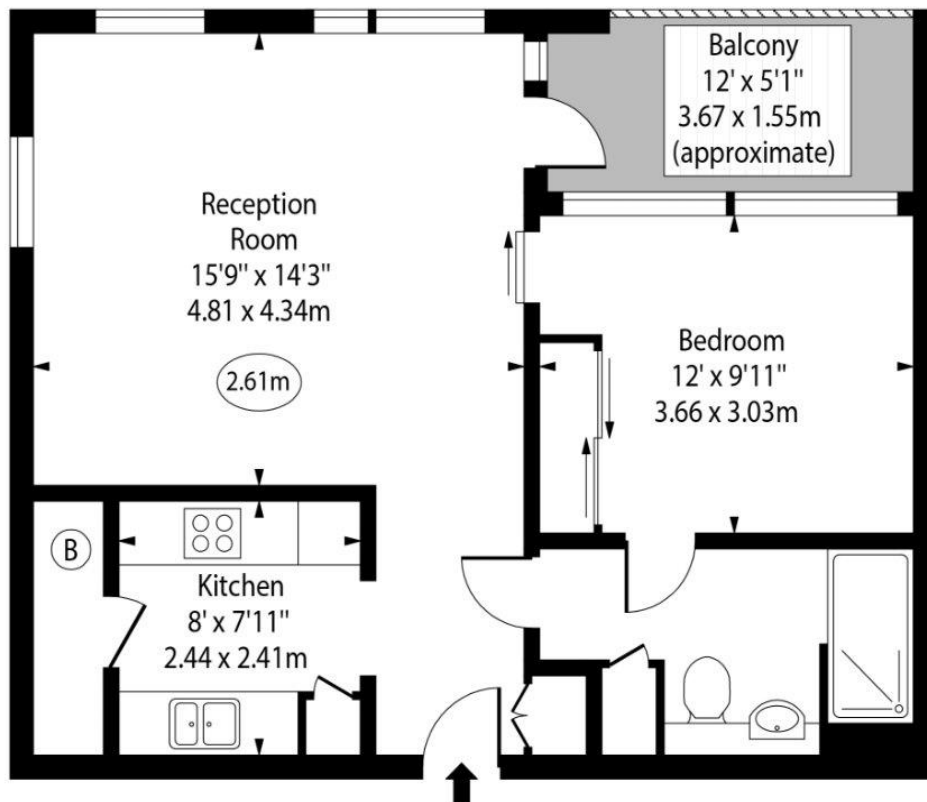
020 7794 3311

chestertons.co.uk

Belle Vue Apartments,
Rowland Hill Street,
Hampstead, NW3



○ - Ceiling Height



First Floor

Approx Gross Internal Area 570 Sq Ft - 52.95 Sq M

Every attempt has been made to ensure the accuracy of the floor plan shown.
However, all measurements, fixtures, fittings, and data shown are approximate interpretations and
for illustrative purposes only. Measured according to the RICS. Not To Scale.

www.goldlens.co.uk
Prepared for Chestertons
Ref. No. 030027A

