



## Midholm Close

Hampstead Garden Suburb, NW11

Asking Price £800,000

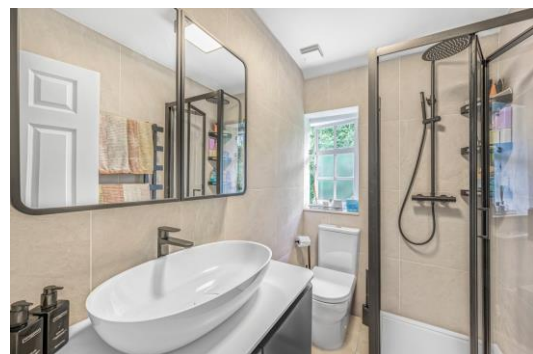
A beautiful character filled two bedroom, two bathroom maisonette with the huge benefit of a private 66' x 24' secluded garden.

This lovely period property is extremely bright, presented in excellent condition throughout and features a 25' x 11' reception room with parquet floors and a fireplace.

Midholm Close is a quest residential close located off Hill Top in Hampstead Garden Suburb, just 0.3 miles from local shops and cafes. Sole agent.

**CHESTERTONS**





## Midholm Close

Hampstead Garden Suburb, NW11

- Beautiful character filled maisonette
- Two bedrooms with built in storage
- Bathroom and shower room
- 25' x 11' reception room with parquet floor
- Private 66' x 24' secluded garden
- 0.3 miles to shops and cafes
- 0.2 miles to Brookland Infant & Nursery School





**Tenure:** Leasehold 969 years remaining.  
**Service Charge:** £181 per quarter including building insurance.  
**Ground Rent:** £0  
**Local Authority:** Barnet.  
**Council Tax Band:** D

Score	Energy rating	Current	Potential
92+	A		
81-91	B		
69-80	C	72 C	77 C
55-68	D		
39-54	E		
21-38	F		
1-20	G		

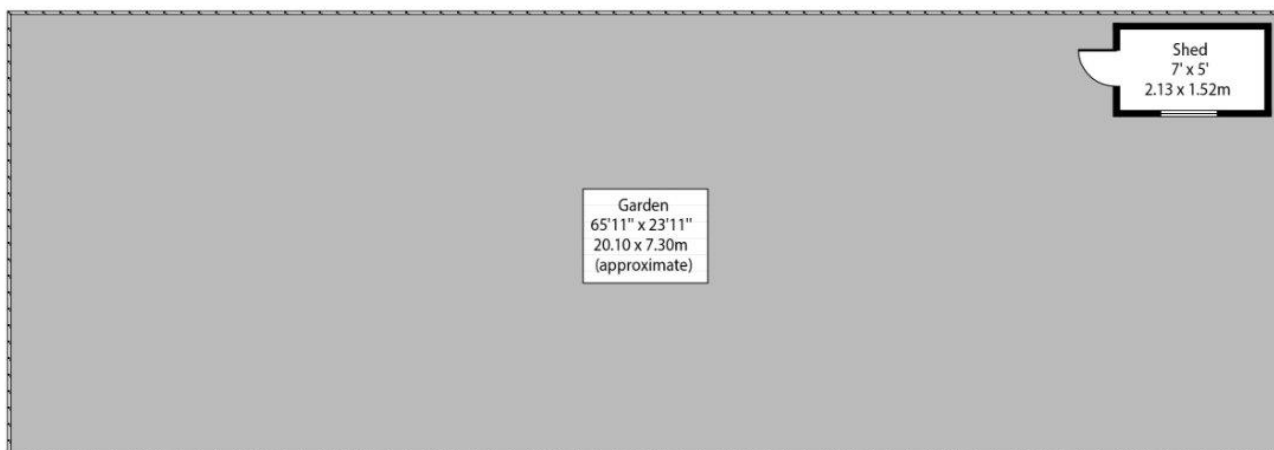
### *Chestertons Hampstead Sales*

55-56 Hampstead High Street  
Hampstead  
NW3 1QH  
hampstead@chestertons.co.uk  
020 7794 3311  
chestertons.co.uk

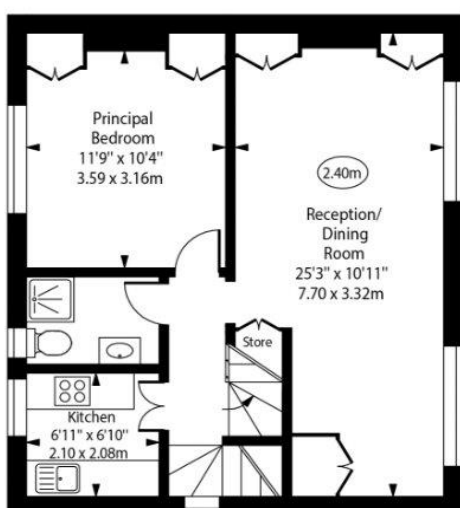


Midholm Close, NW11

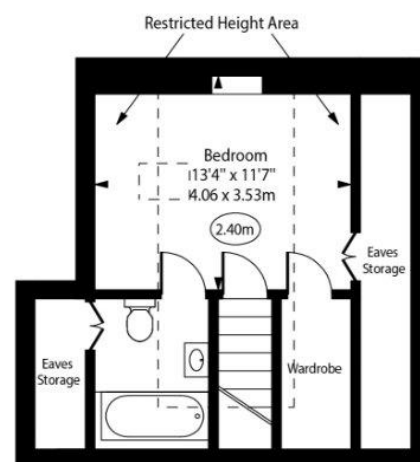
○ - Ceiling Height



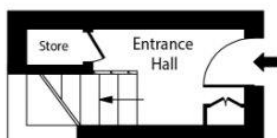
Ground Floor



First Floor



Second Floor



Ground Floor

Approx gross internal area 948 Sq Ft - 88.07 Sq M  
(Including Restricted Head Height and Eaves Storage of 222 Sq Ft - 20.62 Sq M)

For Illustration Purposes Only - Not To Scale

