



New End

Hampstead Village, NW3

Offers in excess of £2,000,000

Nestled in this historic area of Hampstead Village, is this charming four bedroom period terraced house located in picturesque New End.

This beautiful home perfectly blends character, elegance, and modern comfort, rich in features including large multi pane windows affording an abundance of natural light.

Additionally, the property benefits from two superb private outdoor spaces. To the rear, a private West facing patio garden provides a peaceful and secluded retreat, perfect for relaxing and outdoor dining. Crowning the house is an exceptional "suntrap" roof terrace, offering over 300 square feet of space and spectacular, far-reaching views across the rooftops of Hampstead, and beyond across London's skyline.

This is a rare opportunity to own a period home that combines history, charm, excellent accommodation and outstanding outdoor space, in one of Hampstead's most sought-after enclaves.

The cosmopolitan mix of cafes, restaurants and shops that Hampstead Village provides, as well as Hampstead Underground (Northern Line) are located only 0.1 miles away. Access to the open acres of Hampstead Heath is located just 0.2 miles away. Sole agent.

CHESTERTONS



New End

Hampstead Village, NW3

- Four bedroom period house
- Two bathrooms
- Private patio garden
- Private roof terrace
- 0.1 miles to Hampstead Village
- 0.1 miles to the Northern Line
- 0.2 miles to Hampstead Heath



Tenure: Freehold
Service Charge: £0
Ground Rent: £0
Local Authority: Camden
Council Tax Band: G

Score	Energy rating	Current	Potential
92+	A		
81-91	B		87 B
69-80	C		
55-68	D	67 D	
39-54	E		
21-38	F		
1-20	G		

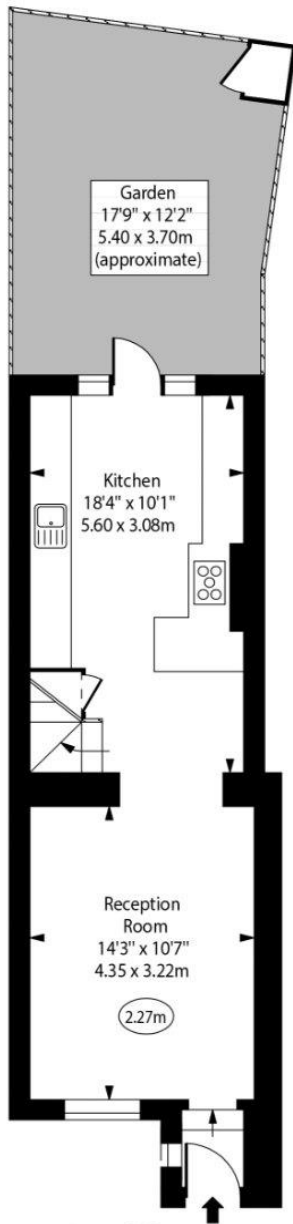
Chestertons Hampstead Sales

55-56 Hampstead High Street
Hampstead
NW3 1QH
hampstead@chestertons.co.uk
020 7794 3311
chestertons.co.uk

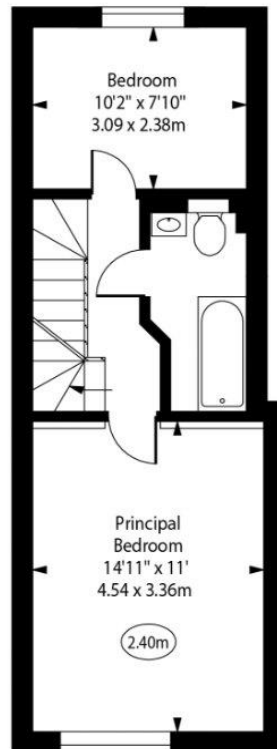
New End,
Hampstead, NW3



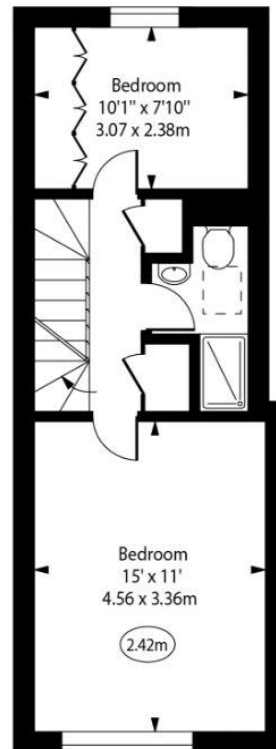
○ - Ceiling Height



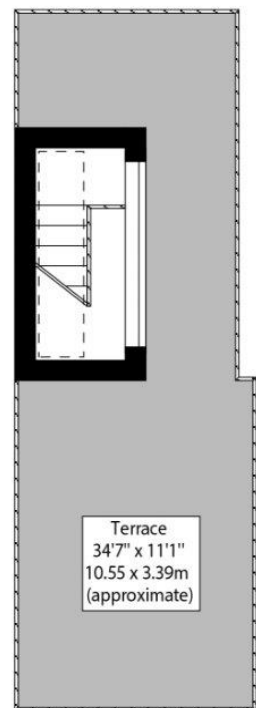
Ground Floor



First Floor



Second Floor



Third Floor

Approx Gross Internal Area

1135 Sq Ft - 105.44 Sq M

Approx. Roof Terrace Area

307 Sq Ft - 28.52 Sq M

For Illustration Purposes Only - Not To Scale

www.goldlens.co.uk

Prepared for Chestertons

Ref. No. 027620J

