



# Belsize Lane

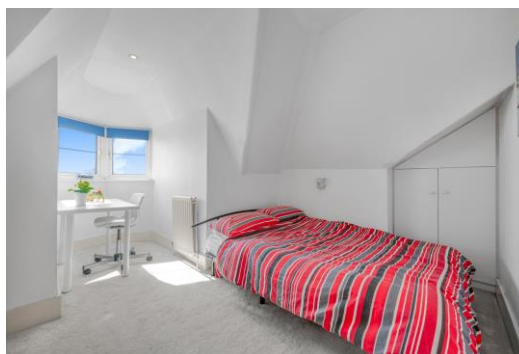
Belsize Park, NW3

Asking Price £800,000

A two bedroom top floor flat situated within this attractive red brick semi-detached house. The flat has the huge benefit of a large and secluded private decked roof terrace accessed from the reception room and the landing.

The property is located just 0.2 miles from the High Street offering a variety of shops, restaurants and cafes, and is only 0.3 miles from Belsize Park Underground (Northern Line). Sole agent.





# Belsize Lane

Belsize Park, NW3

- Top floor flat
- Two bedrooms
- Private decked roof terrace
- 0.2 miles from the High Street
- 0.3 miles from the Northern Line





**Tenure:** Share of Freehold and a lease of 86 years remaining.

**Service Charge:** £1,800 per annum.

**Ground Rent:** £100 per annum.

**Local Authority:** Camden

**Council Tax Band:** F

Energy Efficiency Rating		
	Current	Potential
Very energy efficient - lower running costs		
A		
B		
C		
D	69	77
E		
F		
G		
Not energy efficient - higher running costs		
England, Scotland & Wales		EU Directive 2002/91/EC

### *Chestertons Hampstead Sales*

55-56 Hampstead High Street

Hampstead

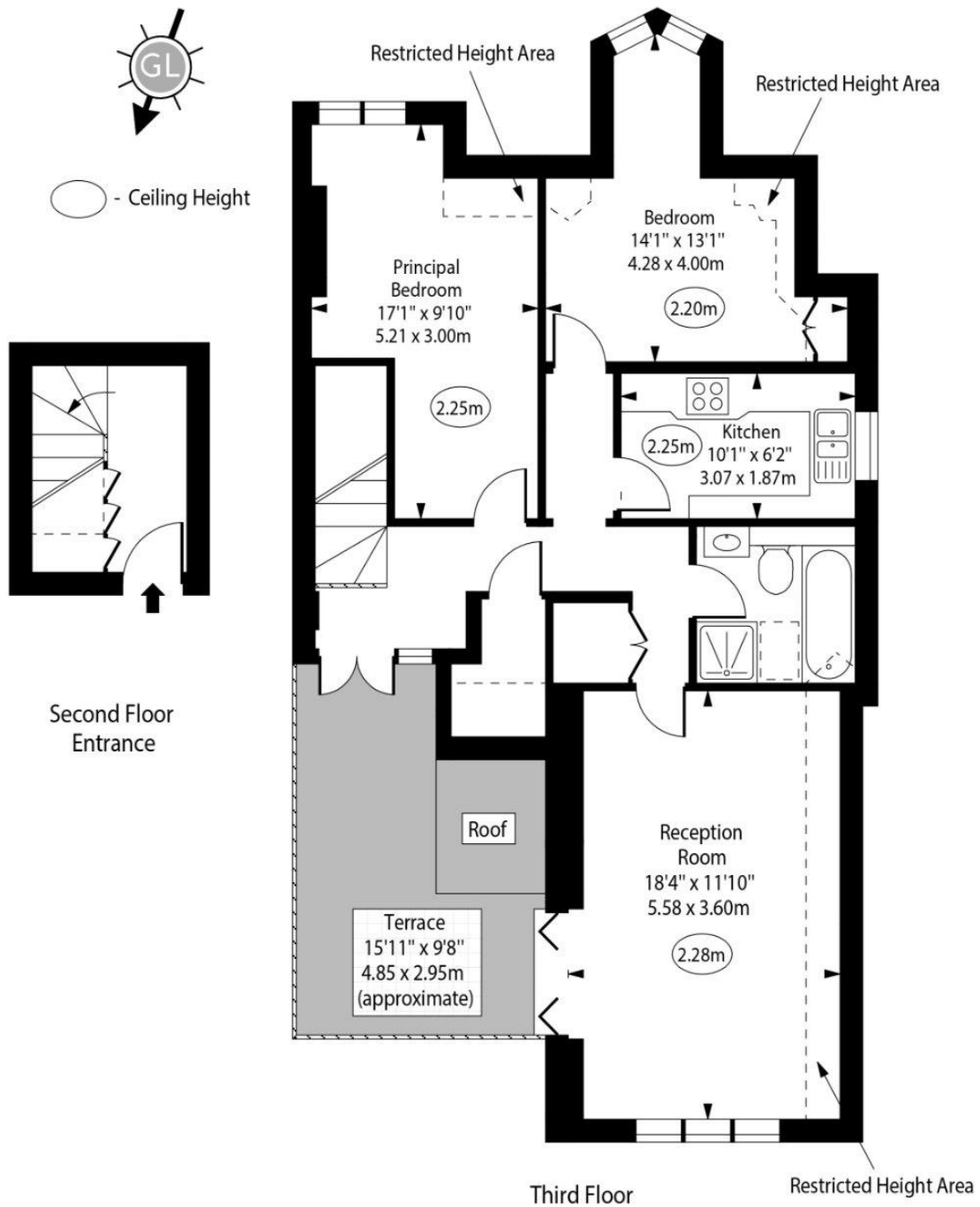
NW3 1QH

[hampstead@chestertons.co.uk](mailto:hampstead@chestertons.co.uk)

020 7794 3311

[chestertons.co.uk](http://chestertons.co.uk)

Belsize Lane,  
Belsize Park, NW3



Approx Gross Internal Area

742 Sq Ft - 68.93 Sq M

Approx. Floor Area Including Restricted Heights

808 Sq Ft - 75.06 Sq M

For Illustration Purposes Only - Not To Scale

[www.goldlens.co.uk](http://www.goldlens.co.uk)  
Prepared for Chestertons  
Ref. No. 027343R

