



# De Laszlo House

Fitzjohns Avenue, Hampstead NW3

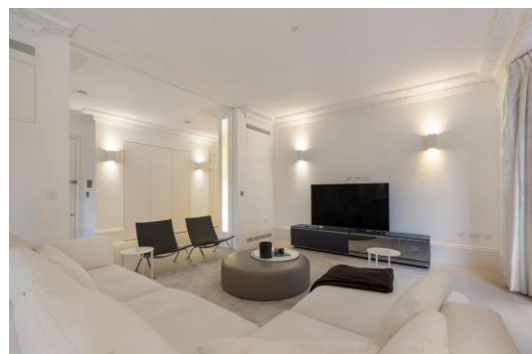
Asking Price £2,950,000

A spectacular and lateral three bedroom apartment situated in this desirable secure development served by lifts and a porter, with the additional benefit of expansive landscaped communal gardens and secure allocated underground parking for one car.

This outstanding property boasts a 28' reception room, 19' principal bedroom with an en-suite bathroom with twin sinks, high ceilings, built in wardrobes in all bedrooms and two south west facing balconies overlooking the communal garden.

De Laszlo House is named after Philip de László, one of the most celebrated Royal portrait artists of the 20th century, who lived here from 1921 to 1937. The property is located just 0.2 miles from the Jubilee Line providing a swift and direct link to Bond Street, Mayfair, Waterloo and Canary Wharf, amongst other destinations. Sole agent.





# De Laszlo House

Fitzjohns Avenue, Hampstead NW3

- Spectacular second floor flat
- 28' reception room
- 19' x 14' principal bedroom
- Built in wardrobes in all bedrooms
- Two further bedrooms
- Two south west facing balconies
- Landscaped communal garden
- Secure underground parking space
- Long leasehold
- 0.2 miles to the Jubilee Line
- One mile to Hampstead Village
- One mile to Primrose Hill



**Tenure:** Leasehold 985 years remaining.

**Service Charge:** £16,000 per annum.

**Ground Rent:** £0

**Local Authority:** Camden

**Council Tax Band:** H

Energy Efficiency Rating		
	Current	Potential
Very energy efficient - lower running costs		
(94-100) <b>A</b>		
(81-93) <b>B</b>		
(69-80) <b>C</b>	80	80
(55-68) <b>D</b>		
(39-54) <b>E</b>		
(21-38) <b>F</b>		
(1-20) <b>G</b>		
Not energy efficient - higher running costs		
England, Scotland & Wales		EU Directive 2002/91/EC

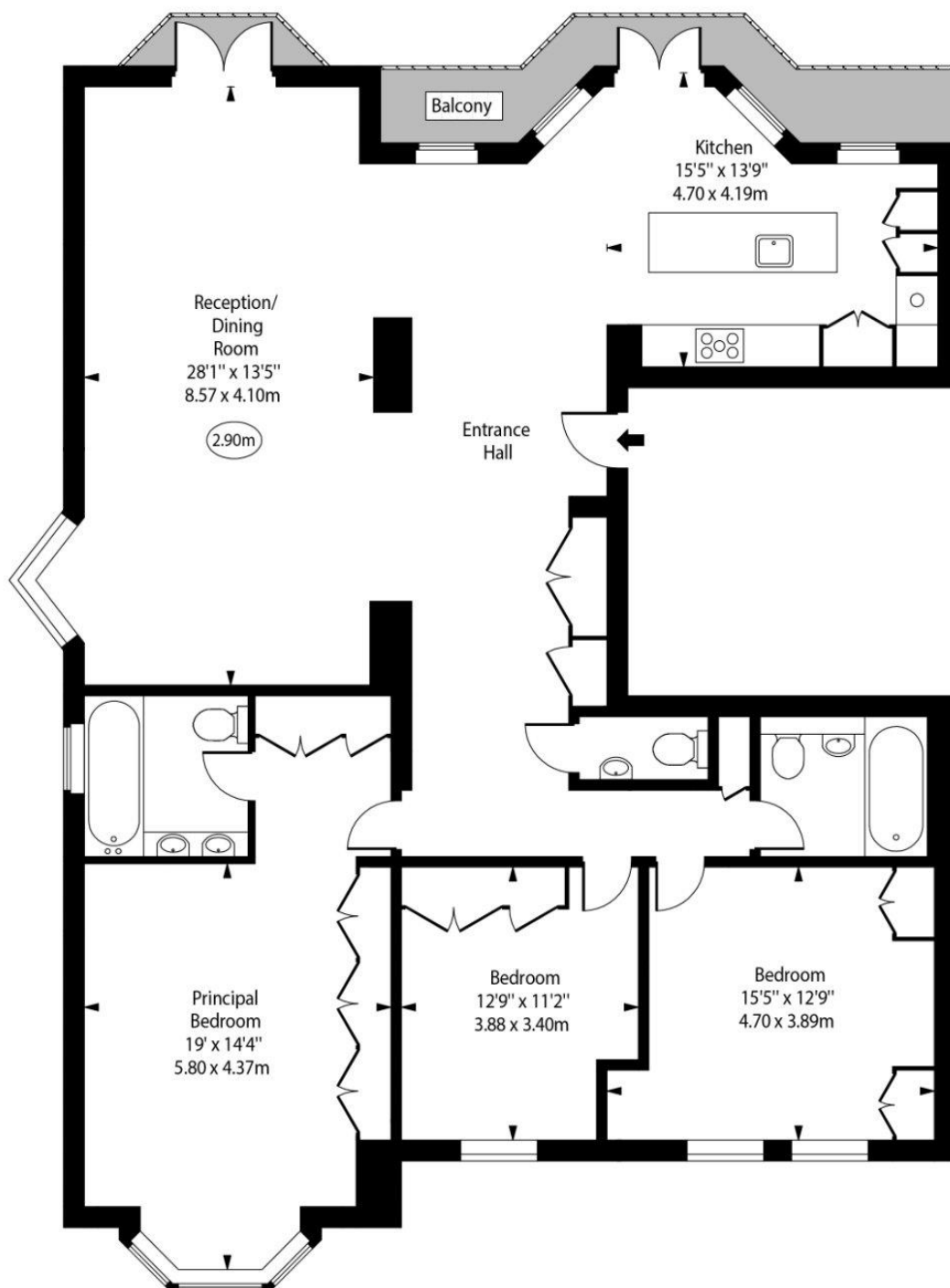
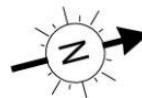
### *Chestertons Hampstead Sales*

55-56 Hampstead High Street  
Hampstead  
NW3 1QH  
hampstead@chestertons.co.uk  
020 7794 3311  
chestertons.co.uk



De Laszlo House,  
Fitzjohns Avenue,  
Hampstead, NW3

○ - Ceiling Height



Second Floor

Approx Gross Internal Area 1777 Sq Ft - 165.08 Sq M

For Illustration Purposes Only - Not To Scale

